



**COLLECTION**  
2026 - 2027



# Your carpet, our tradition.

We are Tapibel, a **passionate carpet manufacturer** based in **Pelt (Belgium)**. We offer modular flooring concepts for every space. Our goal? Sparking creativity with our **innovative and sustainable collections**. Available in carpet tiles, wall-to-wall carpet and rugs. Get inspired!

# Common thread of tradition and respect

**Everything starts with the yarn and the fibres.** Every carpet and every floor covering starts as a bobbin of basic yarn, comprising millions of yarns that are processed into one whole. The people behind Tapibel know the world of carpets like the back of their hands. We have been true **carpet masters for over fifty years**, producing both tufted and needle-felt carpet. We have been passing on the knowledge of carpet production **from generation to generation** since 1970.

You can see, hear and feel **our tradition**: in the authentic factory, in the innovative products, but above all, in the people behind Tapibel. What is our common thread? Respect. Respect for each other, our products, the machines and of course, our customers. The relationships we establish with customers and employees are always **sustainable, open and honest**.

We work with machines to manufacture our carpets and carpet tiles, but **humanity is the central theme**. Our employees operate the machines, fill them, adjust them and check the carpets carefully. It's all in the details. Quality and service are key, loose ends (and loose threads) don't stand a chance. Most of our tufted carpets are intended for the contract market, specifically for use in offices, hotels and public buildings. Our needle-felt carpet is in demand in the event sector.



# Strong cohesion

**The yarn is processed in the tufting machine.** Whether we make a loop pile or cut pile, we always produce a strong and durable carpet. Our employees and customers also strengthen our operation. We prefer to call them **“family”** because it describes our relationship so much better. They are inextricably linked to Tapibel and have worked for decades to make the company what it is today. Each and every day. Thanks to them, we can offer our high-quality products and services.

# Flexible connection

**The carpet is finished with a strong adhesive compound** that holds and connects all the yarns or fibres together. The result is that it forms one whole and remains in good condition. **Flexibility and connection** form the basic yarn of Tapibel. We are prepared to develop and make tailored solutions to our customers. Do you need a smaller number of square metres or maybe more? Do you need a special carpet for an event? We can talk about it. We want to get to know you as a customer and build a strong bond. And we prefer to do that informally.

# Global carpet

**The result is global carpet.** We use the word “global” because Tapibel is a Belgian carpet producer with an international character. We serve customers all over the world. We have customers as far afield as Finland to Cyprus, and from Iceland to Dubai. That means that we naturally take the traditions, customs and trends of the countries to which we export our products into account.

Our carpets and approach are a great fit for today's world because **we consider ecology and sustainability** to be of paramount importance. We are always looking for ways to make our carpet production more sustainable and ecological. Find out more about all our sustainable initiatives here. We keep our promises and make our promises achievable and tangible.

**From basic yarn to carpet**, Tapibel is a known, reliable partner in the carpet industry. We continue innovating and focussing on (the carpet of) the future without losing sight of our common values.



# Twise: sustainable initiatives for a greener planet

T W I S E



Our carpets and our approach fit into today's world as we are committed to ecology and sustainability. We are always looking for ways to make our carpets and carpet production more sustainable and ecological. We make this promise a reality with concrete **ecological solutions for a more sustainable modus operandi.**

## Discover Twise, Tapibel's sustainability brand.

### Why Twise?

1. Tapibel is "wise" to produce greener carpets.
2. All sustainable solutions contain recyclable material.  
We give it a second (and third, fourth, ...) life.

### The result?

A more sustainable and ecological carpet, from the yarn to the backing.

As a family business, we also think of the next generations. Thanks to these adjustments they can enjoy a greener world and greener carpet.

# Ecofuse

The adhesive



Ecofuse is our **ecological alternative to the traditional latex adhesive** compound in wall-to-wall carpet, carpet tiles and rugs. We replace the latex with a sustainable, post-consumer product called PVB (PolyVinyl Butyral), extracted from used car windows and laminated building glass.

## The benefits



of sustainable origin



non-toxic



future-proof



The switch to PVB results  
in a latex reduction of  
**500 tonnes!**



Scan the QR code  
and discover the PVB  
production process!

## Ecofuse in our carpets

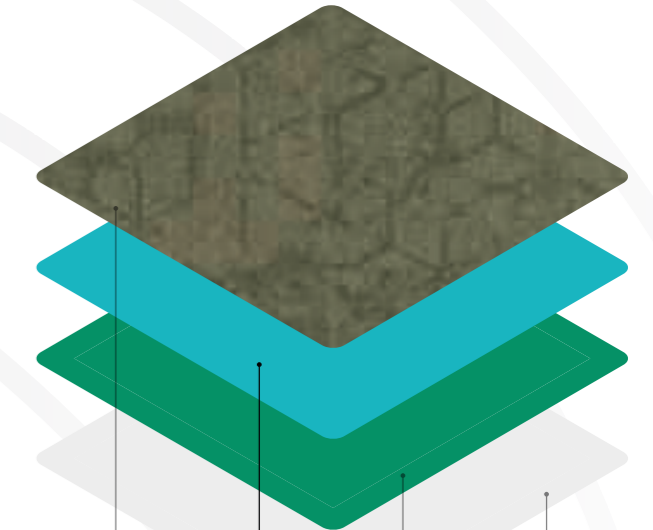
At Tapibel, we use Ecofuse in many of our carpets. Both in wall-to-wall, in carpet tile and rug.

### Precoat

The first adhesive layer between yarn and primary backing to ensure that the yarns bond firmly.

### Secondary backing

A second adhesive layer is applied to glue the action or felt backing onto the actual carpet. This final process ensures that the wall-to-wall carpet obtains more body and rigidity.



1

Yarn



2

Precoat  
Ecofuse



3

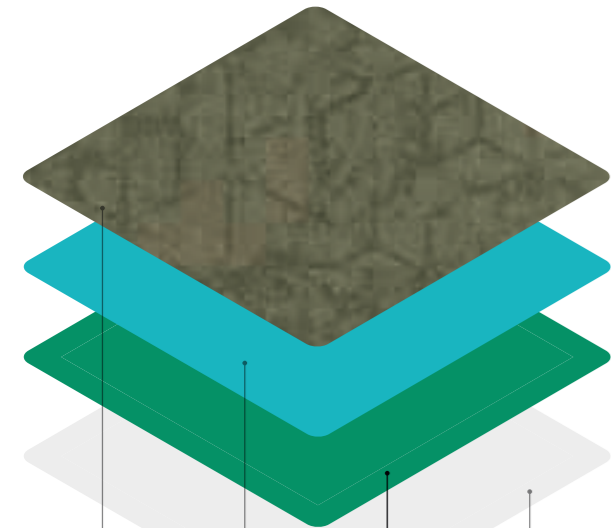
Greenbase

4

Cover sheet

# Greenbase

The modified bitumen backing



1

Yarn



2

Precoat  
Ecofuse



3

Greenbase

4

Cover sheet

Greenbase, short for modified bitumen, is a more sustainable solution for carpet tile backing. It consists of **70% recycled materials** (diverted from a waste stream of limestone mining) which makes it less harmful to the planet. Greenbase guarantees both dimensional stability and strength in the final product.

70%  
recycled  
materials



# ECONYL®

The yarns



The yarn of several of our collections are made of ECONYL®. The material is made of **100% of Nylon 6 waste**. ECONYL® has exactly the same properties as standard nylon with a more durable edge: it can be regenerated indefinitely without loss of quality.

By recycling the materials ECONYL® yarn contributes to a **circular economy**.



Currently, **25%** of the yarns we use in production are **ECONYL®**.



Compared to virgin materials, ECONYL®'s **CO<sub>2</sub> emissions** are reduced by **74%**.

## The ECONYL® Regeneration System by Aquafil



### 1. Rescue

Aquafil collects waste (fishing nets, dust scraps, old carpets, etc.). The materials are cleaned and sorted.



### 2. Regenerate

After a thorough regeneration and purification process, the nylon waste is returned to its original state.



### 3. Remake

ECONYL® regenerated nylon is processed into yarns.



### 4. Reimagine

With this new yarn, manufacturers such as Tapibel can get to work and create new carpet collections made with ECONYL®.



# Measurable Environmental Impact with EPD

We reinforce our sustainability initiatives with two **Environmental Product Declarations (EPD)**. These certificates underline our commitment to sustainability and prove that design and environmental awareness go hand in hand. No empty words, but concrete actions with real impact.

## 1. EPD for ECONYL® tile collections

ECONYL® yarn is made from 100% regenerated nylon. This way, the carpet tiles contribute to a circular future with less waste and up to **90% lower CO<sub>2</sub> emissions** compared to standard PA6 nylon.

## 2. EPD for Cobalt tile collections

Thanks to the latest innovations in the production process, the **environmental impact of the yarn is reduced by as much as 46%**.

**Lower CO<sub>2</sub>  
emissions up  
to 90%**

# Other sustainability initiatives



## **a large solar panel park on the roof**

The 2500 solar panels generate 500 MW/year which represents 35% of our total electricity consumption.



## **electric charging stations in the car park**

We encourage employees and visitors to drive electric. The charging stations in the car park provide a boost.



## **simultaneous dispatch of samples and orders**

We keep polluting transports to a minimum by sending as many orders as possible at the same time.



## **ecological packaging for our carpets**

We pack our carpets in recyclable cardboard boxes.



## **a heat pump for the offices**

The heat pump is powered by the solar panels and extracts heat and cold from the constant temperature of the ground. 9000 metres of ducts filled with water in underfloor heating and a climate ceiling ensure a pleasant temperature.





# Discover TRIFORMA™+

When it comes to creating carpets that combine beauty and performance, TRIFORMA™+ sets a new standard. Developed by Aquafil's decades of expertise and innovation, this unique yarn technology brings together durability, colour brilliance, versatility, and advanced protection. All in one solution. It's designed to deliver reliable performance over time in demanding environments, while offering endless creative possibilities.

Our **Elemental Design Collections** are made using TRIFORMA™+, ensuring every design reflects this superior quality and innovation.

## A promise of quality, creativity and reliability

### 1. Innovation and performance

Engineered with a special polymer, TRIFORMA™+ **resists acid-based stains and enhances cleanability.** Its profile is designed to maintain aesthetic appeal, even under challenging conditions. This makes everyday maintenance easier and helps carpets look better for longer.

### 2. Unsurpassed durability

Built for heavy-traffic areas, TRIFORMA™+ delivers exceptional mechanical strength and long-term stability. It meets **Class 33** standards, ensuring your carpet performs flawlessly even in the most demanding applications.

### 3. Brilliant, long-lasting colours

Whether you want subtle tones or bold statements, this yarn technology guarantees **vibrant colours that remain beautiful over time.** Design flexibility and colour stability come together to support lasting visual impact.

# Compose your ideal carpet

The possibilities are endless with carpet. There are dozens of colours available, in different sizes, with or without special finishes. Add to that the myriad of installation layouts from modular carpet tiles and you can **easily create unique floor concepts**.

Because that personal touch is so important, you can create your own carpet at Tapibel, **starting from as little as 200 m<sup>2</sup>**.

First things first, **the tile format**. Do you choose the larger square tiles (100 x 100 cm) or do you prefer the rectangular tiles of 100 x 50 cm? Want something more special in your interior? The carpet planks of 25 x 100 cm make every room an eye-catcher.

Foot comfort and good acoustics are important advantages of carpet. All our carpet collections are designed with high-quality, durable materials that promote user well-being through good foot comfort and quiet acoustics. Do you want to optimize those two aspects even further? Then choose **Soundbloc** to finish the back of your carpet tile. That way you can enjoy the best that carpet has to offer.

Haven't found what you are looking for in the colour bank of a collection? Tapibel offers the **Cobalt Colour Concept**. Read more about it on the following pages.

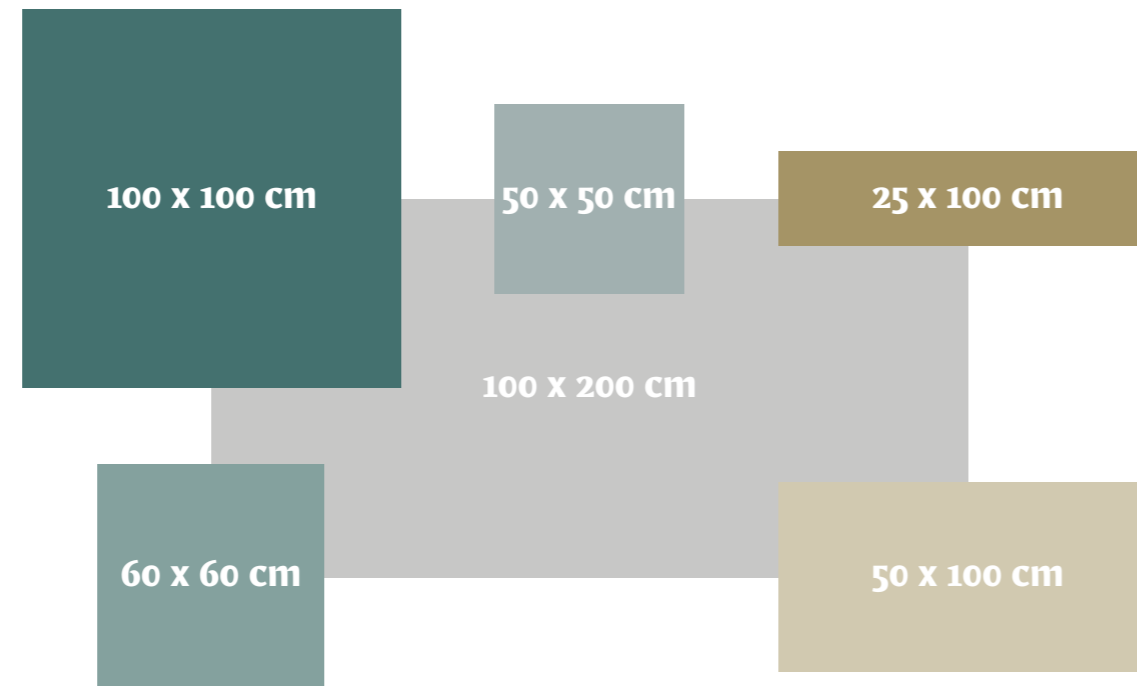


# Tile format

Today's working environments or hospitality interiors feature more than just one design or colour style. Interior designers prefer a more **sophisticated** and **creative carpet look** that can be combined with hard flooring specifications. A **unique signature** to each of their projects.

At Tapibel we emphasize the importance of this **modular flooring trend**. For projects **exceeding 200 m<sup>2</sup>**, **special tile sizes** are made available in both Greenbase or Soundbloc backing.

Custom made tile/plank orders may result in an overproduction of about 10% which is mandatory to purchase. Keep this in mind when you calculate and budget your project work.



# Soundbloc

Carpet is a natural sound absorber and reduces impact noise while absorbing sound within the space. **All our qualities** have **sound absorbing properties** and **reduce impact noise**. Several collections even reach the  $\alpha_w$  0,35 treshold, reducing sound up to 50%.

Sound is an **important aspect** in many buildings like office environments, hotels, schools and educational facilities, hospitals, nursing homes and healthcare infrastructure. In all these environments, bad acoustics and intrusive sounds can damage the functionality of the environment.

Modern office workplaces should support work optimally and provide a positive ambiance to the employees. Furthermore, they should encourage staff motivation and the power of concentration. Flexible office structures combined with communicative room structures meet those demands best. Create a **productive environment** by **improving room acoustics** with our **Soundbloc technology**. Add an extra layer of comfort under working feet and transform offices into pleasant working spaces.



① Tufted **polyamide top cloth** on a **polyester fleece primary backing** with a **precoat** finish for improved fibre bond

② **Bitumen** with **glass fibre scrim secondary backing** to assure dimensional stability and improve laying properties

③ 500gr **Soundbloc** polyester felt backing to increase acoustic performance, durability and underfoot comfort

# Cobalt Colour Concept

## 28 Cobalt colours to create from

At Tapibel we love a creative challenge and we like to stimulate your imagination. Do you want to create a truly unique floor? Then you have to look beyond our stock collections.

Our **Cobalt Colour concept** will surely fire up your creativity. For projects of over **400 m<sup>2</sup>**, we can customise any dazzling floor:

**Step 1:** Choose the desired design from our Cobalt Design or ECONYL® Design Collections.

**Step 2:** Choose the two Cobalt SDN colours from our 28 available options.

**Step 3:** Order your customised sample.





# Carpet tiles, wall-to-wall carpet & rugs

At Tapibel, we produce carpet collections in three varieties: modular carpet tiles, wall-to-wall carpet and rugs.

## Carpet tiles

Carpet tiles offer endless creative possibilities. Create your own modular floor design in no time. You can order standard qualities from stock. The standard carpet tile size is 50x50 cm. Other sizes, including 25x100 cm, are also available in some cases.

## Wall-to-wall carpet

There is a wall-to-wall carpet for every room and setting – from a hotel or entrance hall, to a bedroom or event location. Carpet is suitable for both residential and commercial interiors. One of the advantages? The seamless look.

## Rugs

Enter a world where luxury takes on new meaning. Tapibel introduces: the Tapibel rugs. Our rugs make a statement in any space. They combine refined aesthetics with sustainability thanks to ECONYL® thread.

## Want to know in which version(s) a collection is available?

We indicate this with a symbol in the technical details.

 Carpet tile

 Wall-to-wall

 Rug

# Collections



President E 65340  
President E 65344  
President E 65345



Almyra 61911

lush  
short pile  
soft

## Almyra

Almyra takes **softness and luxury** to a higher level. This velvet carpet with a soft touch feels wonderful under your feet. Almyra is also an ecological choice; it is made from 100% regenerated ECONYL® nylon yarn. This means you are choosing luxury and sustainability. Despite its softness, Almyra doesn't compromise on performance thanks to the resilient two-ply solution dyed yarn. Choose from 12 warm colours to take any commercial flooring project to the next level.



Almyra 61911



61910

LRV 57,59



61911

LRV 44,28



61920

LRV 37,52



61922

LRV 23,38



61924

LRV 25,59



61940

LRV 40,17



61941

LRV 45,01



61942

LRV 30,72



61943

LRV 23,40



61944

LRV 19,62



61945

LRV 6,86



61947

LRV 25,53

## Technical details

**Manufacturing type**  
tufted 1/10"

**Construction**  
2-ply cut pile

**Pile composition**  
100% PA 6 - Econyl®

**Pile weight**  
1.200 g/m<sup>2</sup> (+/-)

**Total weight**  
2.100 g/m<sup>2</sup> (+/-)

**Pile height**  
6,5 mm (+/-)

**Total height**  
8,0 mm (+/-)

**Size**  
400 - 500 cm

**Classification**  
33 heavy commercial

**Fire resistance**  
Cfl-S1



Rug



Wall-to-wall



Almyra 61945





Artisan Tweed 64840

minimalist  
timeless  
tweed pattern

# Artisan Tweed

Artisan Tweed has a **minimalistic yet timeless design**. The tweed pattern is inspired by timeless Chanel fabrics and popular designs in hard flooring such as woven vinyl. The ECONYL® yarn makes this collection a sustainable choice. Artisan Tweed is more subtle and fits seamlessly into any timeless interior in just about any setting. Mix and match Artisan Tweed with other sustainable designs, such as Shoreline and Diamond Art.



Artisan Tweed 64840  
Artisan Tweed 64850





64820 LRV 24,42



64821 LRV 21,86



64822 LRV 13,66



64830 LRV 7,84



64838 LRV 11,77



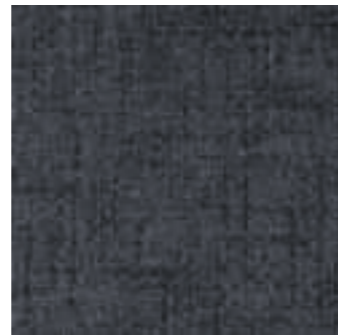
64840 LRV 23,88



64841 LRV 17,57



64842 LRV 12,40



64850 LRV 7,57



64860 LRV 11,09



64866 LRV 11,42



64870 LRV 10,50

## Technical details

**Manufacturing type**  
tufted 1/10"

**Construction**  
structured loop pile

**Pile composition**  
100% PA 6 - Econyl®

**Pile weight**  
650 g/m<sup>2</sup> (+/-)

**Total weight**  
4.400 g/m<sup>2</sup> (+/-)

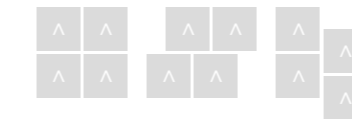
**Pile height**  
4,0 mm (+/-)

**Total height**  
7,0 mm (+/-)

**Size**  
50 x 50 cm

**Classification**  
33 heavy commercial

**Fire resistance**  
Bfl-S1



**ECONYL®**  
REGENERATED NYLON

 Carpet tile

 Wall-to-wall



Artisan Tweed 64860  
Groove Tones 62162  
Groove Tones 62185



Aztec Weave 6593233

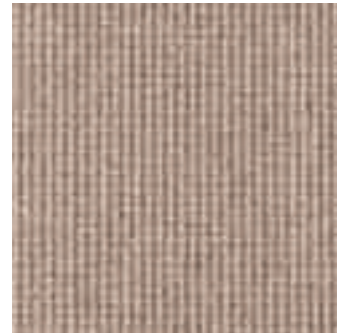
line structure  
modern  
versatile

## Aztec Weave

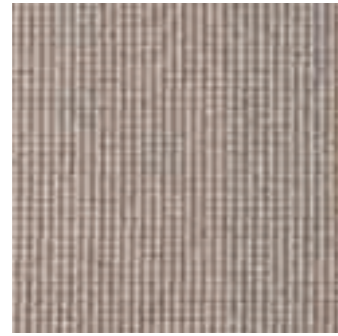
Aztec Weave has a **lined texture** with a versatile weave look. As a result, the collection fits perfectly into any modern office project or commercial space. Choose from 14 neutral colours that will take your project to the next level.



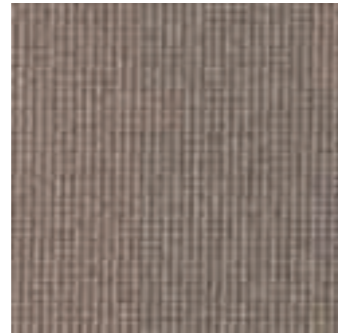
Aztec Weave 6593233



6593120 LRV 16,38



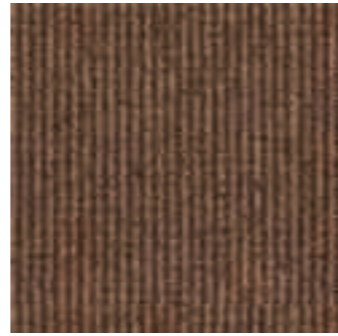
6594520 LRV 15,78



6593044 LRV 9,70



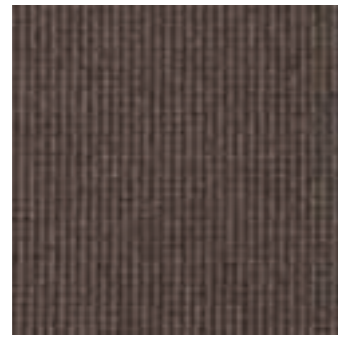
6595031 LRV 8,36



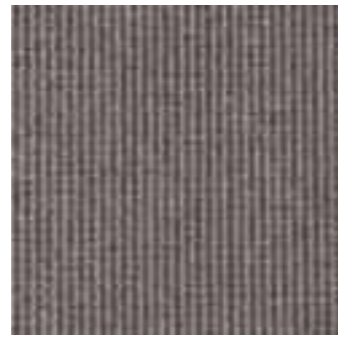
6593309 LRV 8,57



6593233 LRV 5,12



6593230 LRV 5,63



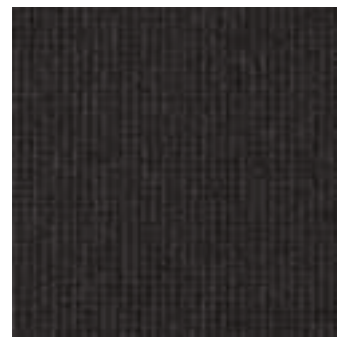
6595044 LRV 8,57



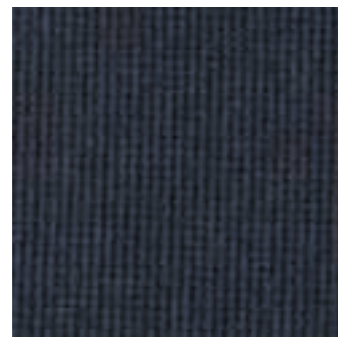
6595145 LRV 6,22



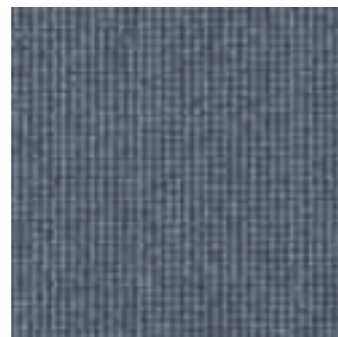
6595150 LRV 4,65



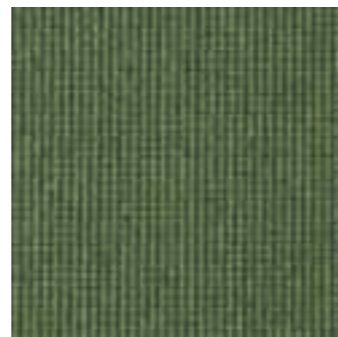
6595551 LRV 3,33



6595560 LRV 3,38



6596261 LRV 7,43



6597073 LRV 7,53

## Technical details

**Manufacturing type**  
tufted 1/10"

**Construction**  
structured loop pile

**Pile composition**  
100% PA 6 (nylon)

**Pile weight**  
600 g/m<sup>2</sup> (+/-)

**Total weight**  
1.885 g/m<sup>2</sup> (+/-)

**Pile height**  
4,0 mm (+/-)

**Total height**  
7,0 mm (+/-)

**Size**  
400 cm

**Classification**  
33 heavy commercial

**Fire resistance**  
Bfl-S1

 Wall-to-wall





Belflor SDN 63643

**budget-friendly**  
**residential look**  
**cosy**

## Belflor SDN

Belflor SDN brings **affordable cosiness** and a homely feel to every home, as well as to public spaces such as shops or at trade fair stands. This new short-pile frisé collection features 6 neutral and highly accessible colours. Thanks to the Solution Dyed Nylon (polyamide) yarn technique, we guarantee a durable (class 32) and easy-care carpet. Its softness and beautiful lustre effect gives it a comfortable feel.



Belflor SDN 63643



63620 LRV 32,33



63630 LRV 26,06



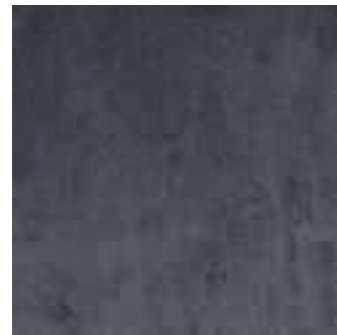
63641 LRV 44,38



63643 LRV 17,54



63645 LRV 7,21



63650 LRV 5,65

## Technical details

**Manufacturing type**  
tufted 1/8"

**Construction**  
2-ply cut pile

**Pile composition**  
100% PA 6

**Pile weight**  
810 g/m<sup>2</sup> (+/-)

**Total weight**  
1.900 g/m<sup>2</sup> (+/-)

**Pile height**  
5,5 mm (+/-)

**Total height**  
6,5 mm (+/-)

**Size**  
400 cm

**Classification**  
32 general commercial

**Fire resistance**  
Cfl-S1

 Wall-to-wall



Belflor SDN 63641



Belina 65730

shiny  
superb comfort  
residential

## Belina

Belina **combines the cosy durability of Zalina with the luxurious softness of Belflor SDN Luxe**, resulting in a versatile carpet collection that feels at home in residential interiors, hotels, and high-end offices. With its shiny frisé texture, soft touch, and superb comfort, Belina elevates every space with timeless elegance.

Crafted from sustainable ECONYL® yarns, the collection not only delivers beauty and resilience but also supports well-being and environmental responsibility. Belina is available as wall-to-wall carpets and carpet tiles in a refined palette of elegant neutral tones, offering both design flexibility and enduring style.



Belina 65730



65750 LRV 5,65



65745 LRV 7,21



65743 LRV 17,54



65741 LRV 44,38



65730 LRV 26,06



66638 LRV 24,61



65720 LRV 32,33



66611 LRV 42,65



66620 LRV 29,05



66641 LRV 24,78



66631 LRV 23,04



66639 LRV 30,49



66633 LRV 20,79



66671 LRV 20,60



66665 LRV 17,35



66663 LRV 25,21



Belina 66638

## Technical details

**Manufacturing type**  
tufted 1/8"

**Construction**  
2-ply cut pile

**Pile composition**  
100% PA6 – ECONYL®

**Pile weight**  
1.250 g/m<sup>2</sup> (+/-)

**Total weight**  
4.800 g/m<sup>2</sup> (+/-)

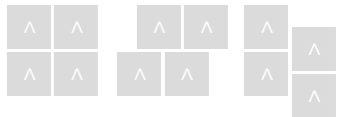
**Pile height**  
9,5 mm (+/-)

**Total height**  
10,5 mm (+/-)

**Size**  
50 x 50 cm

**Classification**  
32 general commercial

**Fire resistance**  
Bfl-S1



**ECONYL®**  
REGENERATED NYLON

Rug

Carpet tile

Wall-to-wall



Cameo 6397073

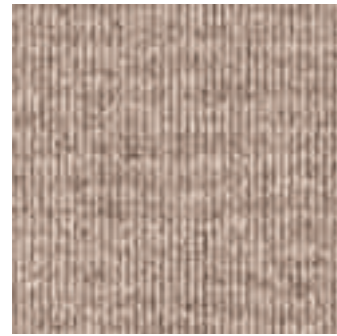
residential  
solid  
wavy

## Cameo

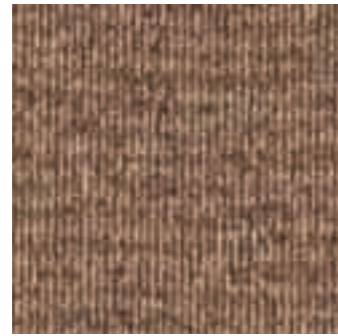
Cameo is Aztec Weave's little sister. The collection has a **wavy, irregular texture** which creates a unique look. That look, combined with its sturdiness, makes the carpet an absolute hit in commercial spaces, the hospitality sector, and residential care centres. The collection also shines in residential settings. Choose from 14 different colours, ranging from neutral to brighter tones.



Cameo 6397073



6392031 LRV 18,22



6390933 LRV 10,34



6393309 LRV 7,38



6393233 LRV 4,63



6392045 LRV 18,28



6393120 LRV 14,08



6394520 LRV 11,98



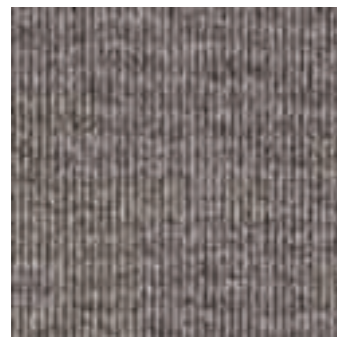
6395155 LRV 3,58



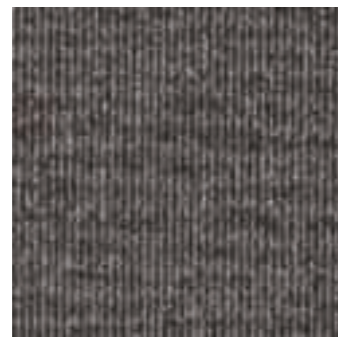
6395150 LRV 4,34



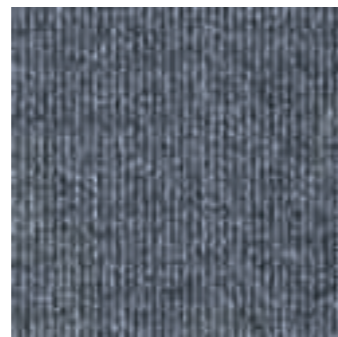
6395145 LRV 5,08



6394450 LRV 10,06



6394551 LRV 7,07



6396162 LRV 8,42



6397370 LRV 8,33

## Technical details

**Manufacturing type**  
tufted 1/10"

**Construction**  
structured loop pile

**Pile composition**  
100% PA 6 (nylon)

**Pile weight**  
600 g/m<sup>2</sup> (+/-)

**Total weight**  
2.000 g/m<sup>2</sup> (+/-)

**Pile height**  
3,5 mm (+/-)

**Total height**  
6,5 mm (+/-)

**Size**  
400 cm

**Classification**  
33 heavy commercial

**Fire resistance**  
Bfl-S1

 Wall-to-wall



Cameo 6393120



Cobalt Creations 6384290

**lively**  
**transition**  
**versatile**

# Cobalt Creations

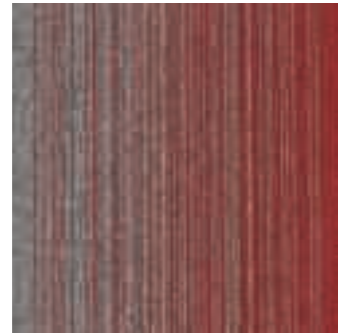
Cobalt Creations is a **modern modular concept of colour transition** that adds character to any interior. The collection combines the uni colours of Cobalt SDN. Create unique floor concepts with the vibrant colour tiles or opt for a modern and sleek with a neutral transition tile. You can choose either option with the numerous laying patterns available. The collection consists of 11 colour options.



Cobalt Creations 6384241  
Cobalt Creations 6384251  
Cobalt SDN 64041  
Cobalt SDN 64051



6384283 LRV 9,06



6384280 LRV 8,50



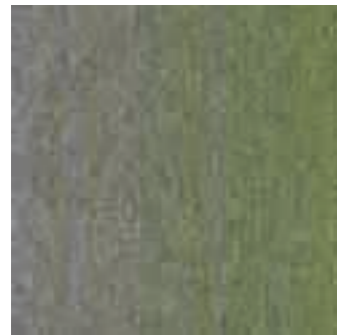
6384238 LRV 9,80



6384249 LRV 14,34



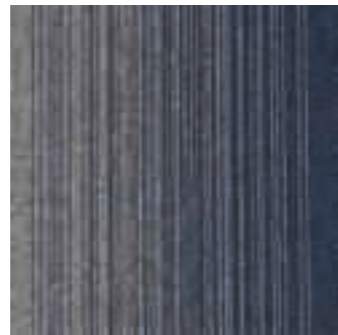
6384290 LRV 15,03



6384273 LRV 10,48



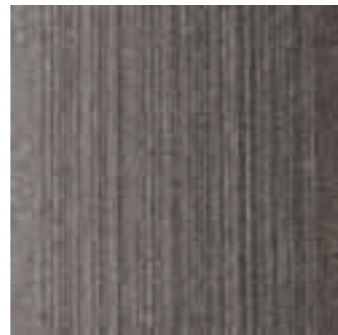
6384263 LRV 9,43



6384260 LRV 7,74



6384251 LRV 7,47



6384250 LRV 8,71



6384241 LRV 15,09

## Technical details

**Manufacturing type**  
tufted 1/10"

**Construction**  
loop pile

**Pile composition**  
100% PA 6

**Pile weight**  
550 g/m<sup>2</sup> (+/-)

**Total weight**  
4.300 g/m<sup>2</sup> (+/-)

**Pile height**  
3,0 mm (+/-)

**Total height**  
6,0 mm (+/-)

**Size**  
50 x 50 cm

**Classification**  
33 heavy commercial

**Fire resistance**  
Bfl-S1



 Carpet tile



Cobalt Creations 6384263  
Cobalt SDN 64042  
Cobalt SDN 64063



Cobalt SDN 64062

**budget-friendly**  
**reliable**  
**versatile**

## Cobalt SDN

Cobalt SDN is our **solid base collection for mixing and matching with other collections**. Cobalt SDN is budget-friendly and offers 28 colours. Choose from warm, neutral shades or go for fresh, trendy colours. Combine the uni colours with our latest Cobalt Design Collections: Grunge, Hexagon Art, Cobalt Creations, Expression or Relined to boost any interior. Order Cobalt SDN from stock, all colours are quickly available.



Cobalt SDN 64061  
Cobalt SDN 64062



Cobalt SDN 64033  
 Cobalt SDN 64041  
 Relined 6444441



64010 LRV 29,52



64020 LRV 23,25



64031 LRV 11,59



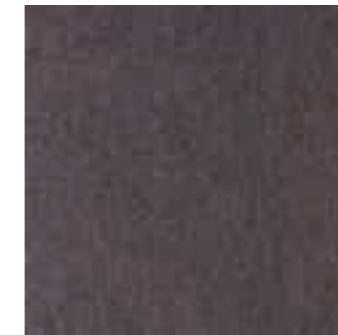
64030 LRV 7,50



64033 LRV 6,19



64055 LRV 2,95



64032 LRV 4,34



64051 LRV 4,05



64050 LRV 5,76



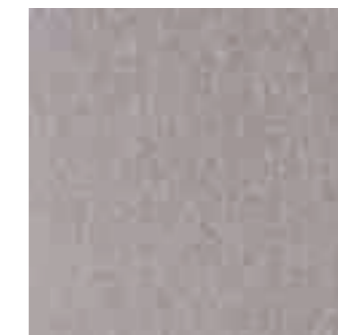
64045 LRV 9,01



64042 LRV 11,13



64040 LRV 16,65



64044 LRV 13,20



64041 LRV 19,33



64096 LRV 3,92



64083 LRV 7,01



64080 LRV 5,73



64038 LRV 8,75



64090 LRV 20,09



64049 LRV 18,59



64070 LRV 5,51



64073 LRV 10,44



64060 LRV 4,05



64065 LRV 4,56



64063 LRV 7,55



64062 LRV 5,76



64061 LRV 9,85



64066 LRV 15,13

## Technical details

**Manufacturing type**  
tufted 1/10"

**Construction**  
loop pile

**Pile composition**  
100% PA 6

**Pile weight**  
550 g/m<sup>2</sup> (+/-)

**Total weight**  
4.300 g/m<sup>2</sup> (+/-)

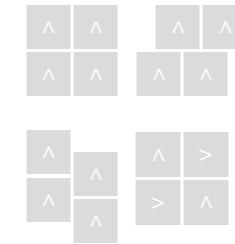
**Pile height**  
3,0 mm (+/-)

**Total height**  
6,0 mm (+/-)

**Size**  
50 x 50 cm

**Classification**  
33 heavy commercial

**Fire resistance**  
Bfl-S1



 Carpet tile

 Wall-to-wall



Cobalt SDN 64061  
Cobalt SDN 64062  
Cobalt SDN 64065  
Cobalt SDN 64066  
Cobalt SDN 64090



Coral Lines 60345

**economical**  
**functional**  
**wear-resistant**

## **Coral (Lines)**

Coral (Lines) has been developed to be **functional, economical and wear-resistant**. These properties make it extremely suitable for heavy commercial use and intensive project use. Coral is available in seven classic colours. Mix and match Coral or Coral Lines, six matching colours with a stripe design for an original look.



Coral Lines 60340  
Coral Lines 60345



58351

LRV 3,85



58350

LRV 5,41



58342

LRV 9,99



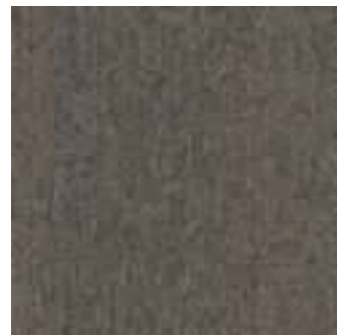
58376

LRV 11,23



58360

LRV 6,19



60309

LRV 11,16



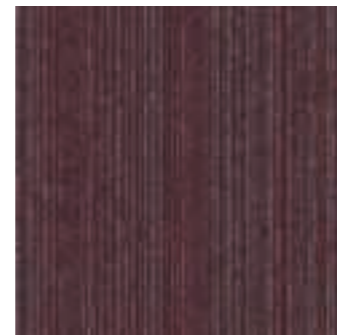
58309

LRV 12,39



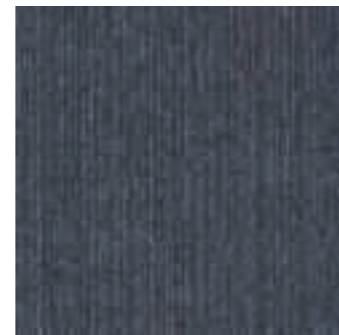
58380

LRV 5,01



60380

LRV 7,28



60360

LRV 8,07



60376

LRV 10,58



60340

LRV 6,76



60345

LRV 7,58

## Technical details

**Manufacturing type**  
tufted 1/10"

**Construction**  
loop pile

**Pile composition**  
100% PA 6 BCF

**Pile weight**  
485 g/m<sup>2</sup> (+/-)

**Total weight**  
4.200 g/m<sup>2</sup> (+/-)

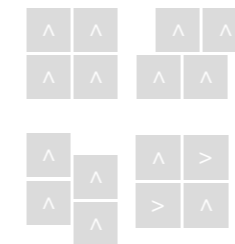
**Pile height**  
3,0 mm (+/-)

**Total height**  
5,5 mm (+/-)

**Size**  
50 x 50 cm

**Classification**  
33 heavy commercial

**Fire resistance**  
Bfl-S1



 Carpet tile

 Wall-to-wall



Coral Lines 60376  
Coral Lines 60351



Country SDN 65240

Scandinavian  
ultratuft  
wear-resistant

## Country SDN

Country SDN is without doubt **a unique collection thanks to the ultratuft technology.** This special production method results in an extremely durable and wear-resistant carpet. Country SDN is the ideal choice for demanding and frequently used areas such as entrance halls, corridors and offices. The typical flat weave look and appearance of Country SDN can often be found in Scandinavian countries. The collection is available in nine minimalist solid colours.



Country SDN 65240  
Country SDN 65250  
Country SDN 65251  
Country SDN 65255



65230 LRV 7,50



65231 LRV 11,59



65240 LRV 16,65



65241 LRV 19,33



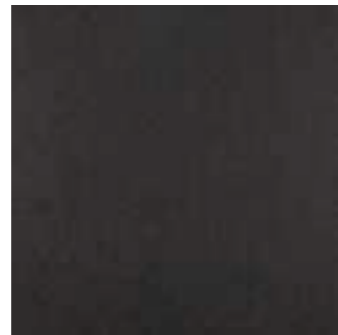
65242 LRV 11,13



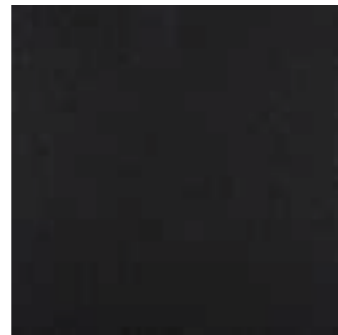
65244 LRV 13,20



65250 LRV 5,76



65251 LRV 4,05



65255 LRV 2,95

## Technical details

**Manufacturing type**  
ultratuft 1/10<sup>2</sup>

**Construction**  
loop pile

**Pile composition**  
100% PA 6

**Pile weight**  
550 g/m<sup>2</sup> (+/-)

**Total weight**  
4.100 g/m<sup>2</sup> (+/-)

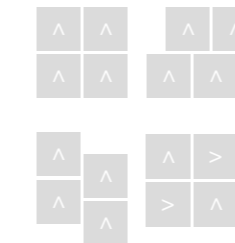
**Pile height**  
1,0 mm (+/-)

**Total height**  
5,5 mm (+/-)

**Size**  
50 x 50 cm

**Classification**  
33 heavy commercial

**Fire resistance**  
Bfl-S1



 Carpet tile



Country SDN 65230  
Country SDN 65241  
Country SDN 65244



Crossline 6623120

**bold  
colourful  
unique**

## Crossline

Crossline is the latest addition to the Cobalt Design Collections. **The unique criss-cross line pattern creates a bold and playful effect.** Moreover, the line design beautifully lends itself to tiling. It can be laid randomly without zippers thanks to the length and lines. The bold pattern is particularly well-suited to hospitality and office environments. Choose from 17 colour options ranging from out-of-the-box ochre yellow to classic anthracite.



Crossline 6623120



6624110 LRV 22,95



6624441 LRV 16,01



6624241 LRV 14,25



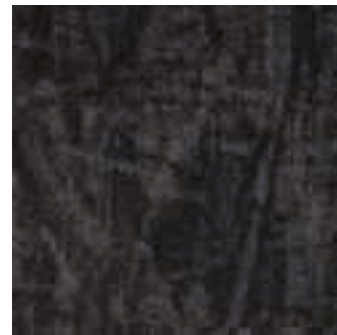
6624240 LRV 13,12



6625044 LRV 8,42



6625145 LRV 6,00



6625550 LRV 4,00



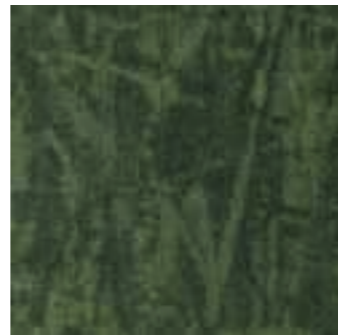
6625551 LRV 3,22



6626062 LRV 4,43



6626563 LRV 5,54



6627073 LRV 7,02



6625049 LRV 11,23



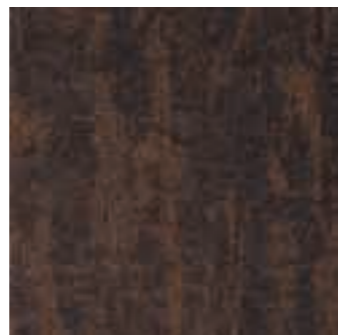
6623120 LRV 7,50



6624544 LRV 10,30



6625130 LRV 5,21



6623233 LRV 5,10



6625038 LRV 6,49



Crossline 6625049  
Cobalt SDN 64050

## Technical details

**Manufacturing type**  
tufted 1/10"

**Construction**  
structured loop pile

**Pile composition**  
100% PA 6

**Pile weight**  
650 g/m<sup>2</sup> (+/-)

**Total weight**  
4.300 g/m<sup>2</sup> (+/-)

**Pile height**  
4,0 mm (+/-)

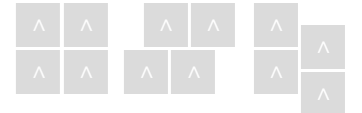
**Total height**  
7,0 mm (+/-)

**Size**  
50 x 50 cm

**Classification**  
33 heavy commercial

**Fire resistance**  
Bfl-S1

**Pattern repeat**  
206 x 172 cm



Carpet tile

Wall-to-wall



Diamond Art 64638

concrete look  
diamond pattern  
versatile

## Diamond Art

Diamond Art has a **check pattern with a concrete look** that draws your gaze to the floor. There is also a diamond pattern in it. This stylish pattern fits any interior, from the contract market to the hospitality sector. The regenerable ECONYL® yarn also makes it an ecological choice. Diamond Art is available in 12 different neutral colours. Combine the bold print of Diamond Art with Groove Tones to create an original look.



Diamond Art 64621  
Diamond Art 64638





64620 LRV 24,42



64621 LRV 21,86



64622 LRV 13,66



64630 LRV 7,84



64638 LRV 11,77



64640 LRV 23,88



64641 LRV 17,57



64642 LRV 12,40



64650 LRV 7,57



64660 LRV 11,09



64666 LRV 11,42



64670 LRV 10,50

## Technical details

**Manufacturing type**  
tufted 1/10"

**Construction**  
structured loop pile

**Pile composition**  
100% PA 6 - Econyl®

**Pile weight**  
650 g/m<sup>2</sup> (+/-)

**Total weight**  
4.400 g/m<sup>2</sup> (+/-)

**Pile height**  
4,0 mm (+/-)

**Total height**  
7,0 mm (+/-)

**Size**  
50 x 50 cm

**Classification**  
33 heavy commercial

**Fire resistance**  
Bfl-S1

**Pattern repeat**  
203 x 167 cm



**ECONYL®**  
REGENERATED NYLON

 Carpet tile

 Wall-to-wall



Diamond Art 64622



Diplomat 66161

performance  
robust  
texture

## Diplomat

When it comes to look and feel, Diplomat resembles President E. What are the biggest differences? Diplomat is more **budget-friendly and made with nylon SDN yarns** instead of ECONYL®. The collection combines sturdiness with quality, while the structure and stylish design bring elegance to any room. It is the standard for floor coverings in both commercial and residential environments. The cut pile with frieze creates a nice finish and an interesting look. This robust carpet is also quite durable, so there's no compromise on performance.



Diplomat 66161  
Diplomat 66162



66110 LRV 26,11



66120 LRV 14,19



66121 LRV 18,57



66122 LRV 12,10



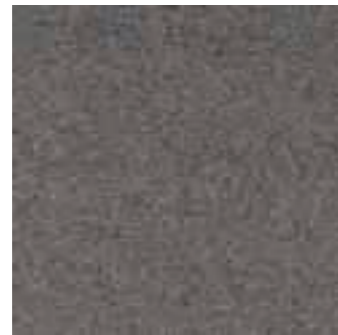
66124 LRV 7,82



66183 LRV 7,09



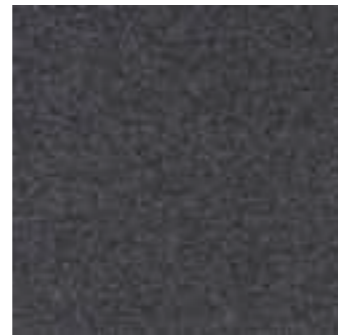
66125 LRV 11,98



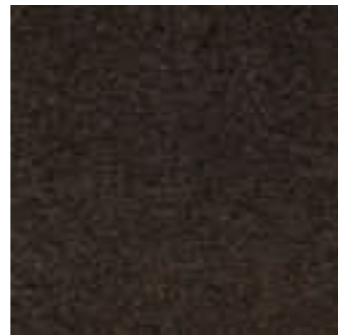
66142 LRV 12,30



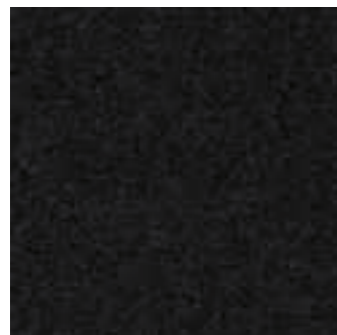
66144 LRV 6,99



66145 LRV 7,04



66146 LRV 5,24



66150 LRV 3,01



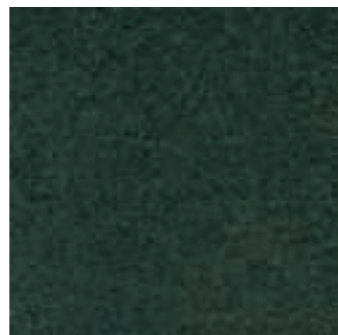
66151 LRV 4,33



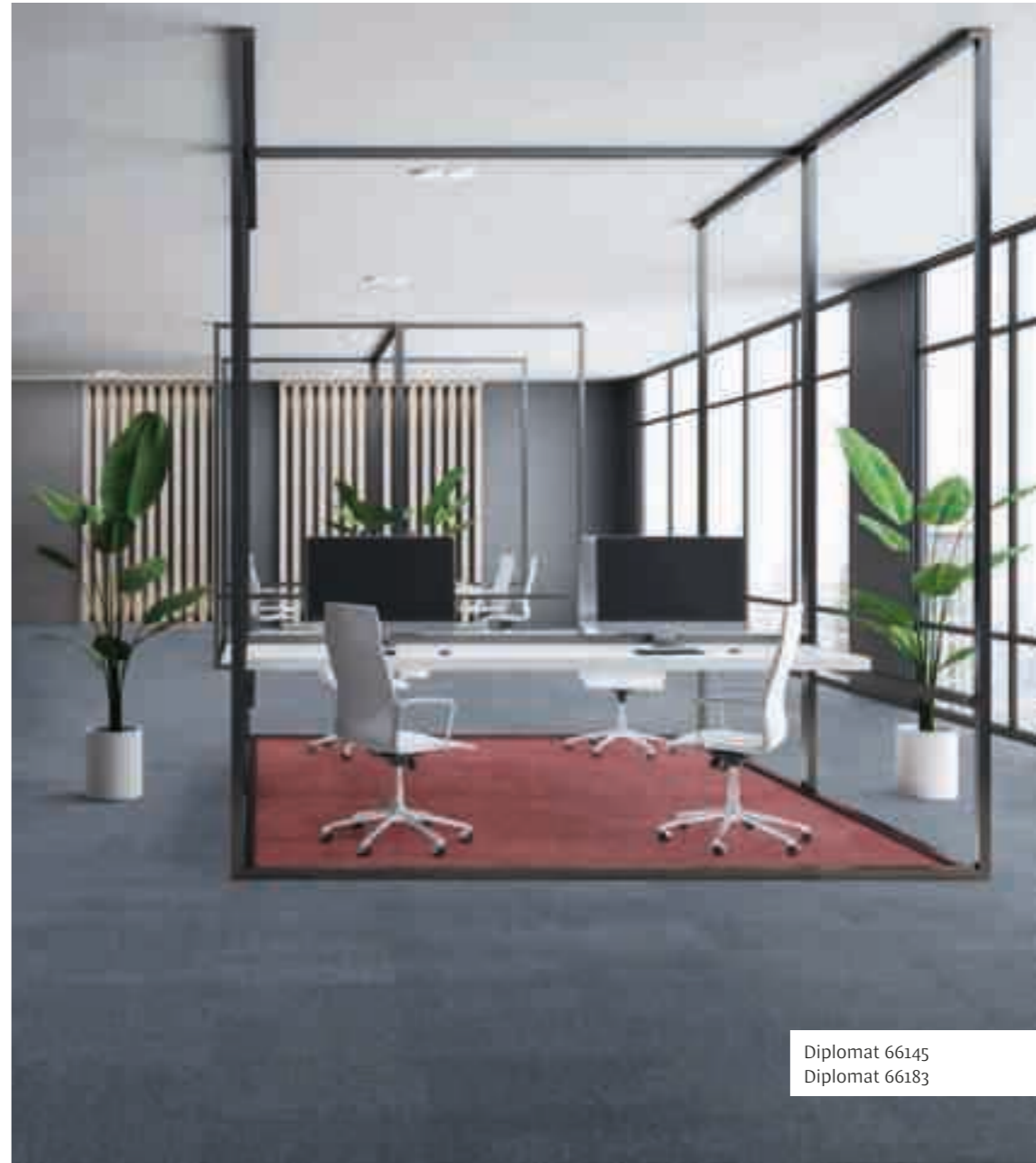
66161 LRV 9,78



66162 LRV 4,66



66170 LRV 5,77



Diplomat 66145  
Diplomat 66183

## Technical details

**Manufacturing type**  
tufted 1/8"

**Construction**  
3-ply cut pile

**Pile composition**  
100% PA 6 - heatset

**Pile weight**  
1.150 g/m<sup>2</sup> (+/-)

**Total weight**  
4.600 g/m<sup>2</sup> (+/-)

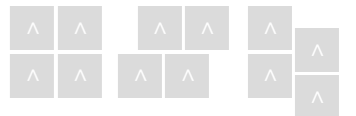
**Pile height**  
5,5 mm (+/-)

**Total height**  
8,0 mm (+/-)

**Size**  
50 x 50 cm

**Classification**  
33 heavy commercial

**Fire resistance**  
Bfl-S1



Carpet tile

Wall-to-wall



Earth 61125

expressive  
innovative  
natural

## Earth

Earth is inspired by nature and has **dynamic patterns and organic colours**. Nature is key in this collection because Earth is sustainable, thanks to the 100% regenerable ECONYL® yarn. This unique floor concept lets interior designers indulge themselves. Earth is suitable for any high-end commercial environment. The 11 rich colours bring warmth to any interior.



Earth 61125



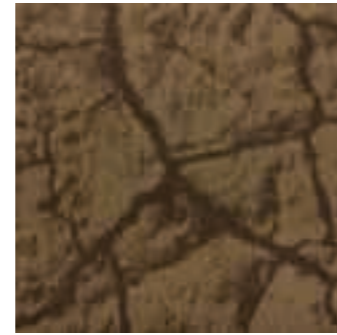
61110 LRV 24,21



61111 LRV 21,18



61120 LRV 18,54



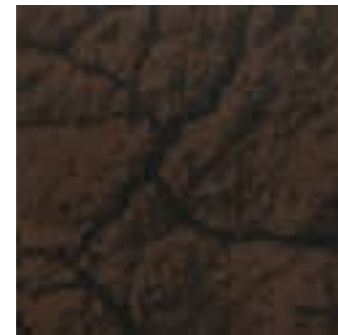
61123 LRV 8,55



61125 LRV 5,98



61132 LRV 8,88



61134 LRV 5,30



61140 LRV 12,74



61141 LRV 13,43



61142 LRV 7,09



61150 LRV 6,12

## Technical details

**Manufacturing type**  
tufted 1/10"

**Construction**  
structured loop pile

**Pile composition**  
100% PA 6 - Econyl®

**Pile weight**  
800 g/m<sup>2</sup> (+/-)

**Total weight**  
4.550 g/m<sup>2</sup> (+/-)

**Pile height**  
5,0 mm (+/-)

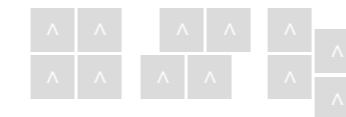
**Total height**  
8,0 mm (+/-)

**Size**  
50 x 50 cm

**Classification**  
33 heavy commercial

**Fire resistance**  
Bfl-S1

**Pattern repeat**  
405 x 250 cm



**ECONYL®**  
REGENERATED NYLON

 Carpet tile

 Wall-to-wall



Earth 61110

balance  
calm  
flexibility

## Elemental

Elemental is a collection of pared-down solid colours, designed to bring balance, simplicity, and harmony to any interior design concept. The collection is constructed from TRIFORMA™+ yarn: sustainable, colourfast, and resistant to heavy use. The use of smart-structured yarn makes the collection dirt-resistant.

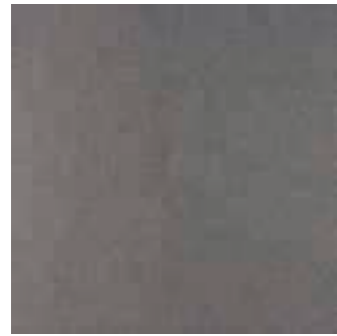
This collection is the **basic quality from the Elemental Design Collections** and fits seamlessly with the patterns of the other Elemental Design Collections: Sienna and Nimbus. Thanks to the uniform pile height, you can effortlessly combine the basic colours and (tricolour!) designs in one room. This is how you create dynamism using soft transitions and stylish layering. The collection features 14 colours: nine timeless basic shades and five expressive accent colours.

Powered by TRIFORMA™+ yarn technology, Elemental delivers advanced performance and easy maintenance. Engineered with a special polymer, it resists acid-based stains and ensures long-term aesthetic appeal. Even in demanding environments.

Elemental 9545



Elemental 9545



9544 LRV 12,55



9545 LRV 8,55



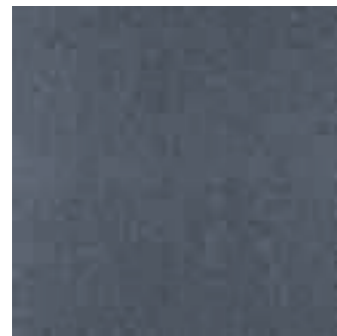
9550 LRV 5,80



9551 LRV 3,78



9555 LRV 2,87



9561 LRV 9,56



9562 LRV 5,58



9531 LRV 11,16



9530 LRV 7,24



9537 LRV 17,10



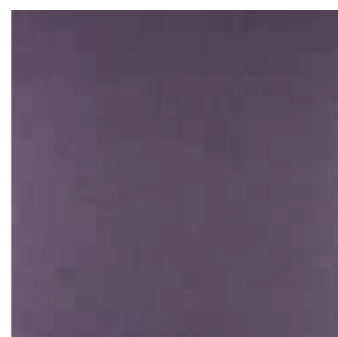
9577 LRV 18,94



9568 LRV 10,67



9567 LRV 15,01



9597 LRV 8,22

## Technical details

**Manufacturing type**  
tufted 1/10"

**Construction**  
structured loop pile

**Pile composition**  
100% PA6 - TRIFORMA™+

**Pile weight**  
600 g/m<sup>2</sup> (+/-)

**Total weight**  
4.300 g/m<sup>2</sup> (+/-)

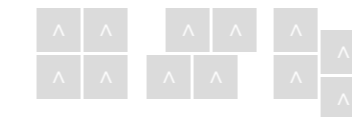
**Pile height**  
4,0 mm (+/-)

**Total height**  
7,0 mm (+/-)

**Size**  
50 x 50 cm

**Classification**  
33 heavy commercial

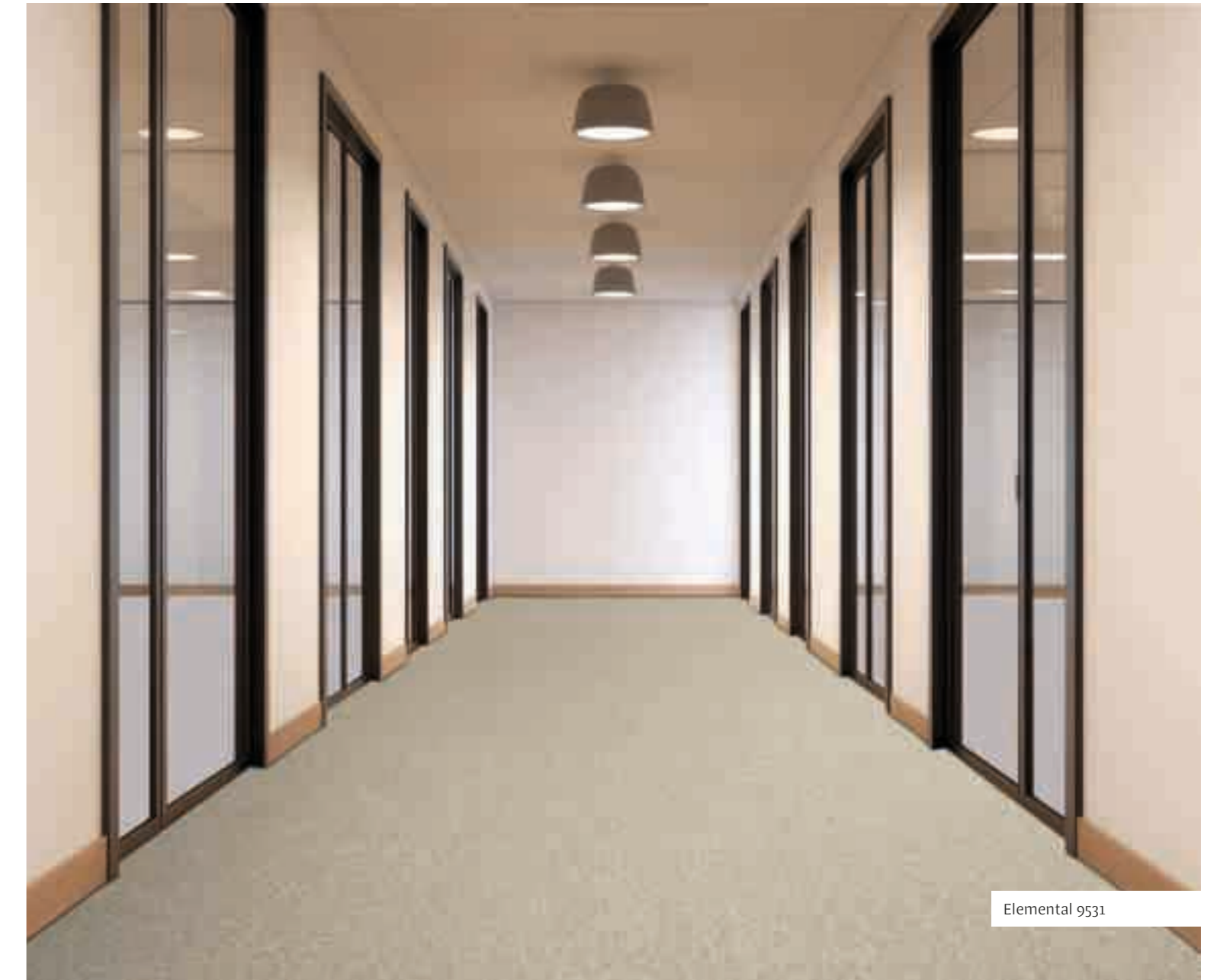
**Fire resistance**  
Bfl-S1



**TRIFORMA +**

 Carpet tile

 Wall-to-wall



Elemental 9531



Expression 6414241

expressive  
organic  
texture

## Expression

Expression's **ship wood or paintbrush pattern catches the eye** and won't leave your attention. Expression belongs to the Cobalt Design Collections. The pattern creates a natural and dynamic look in any interior.

Available in 16 colours, this Solution Dyed product can be effortlessly combined with both the 28 solid colours of Cobalt SDN and the complementary patterns from Grunge, Hexagon Art and Relined. Expression is designed with high-quality, durable materials that promote user well-being.

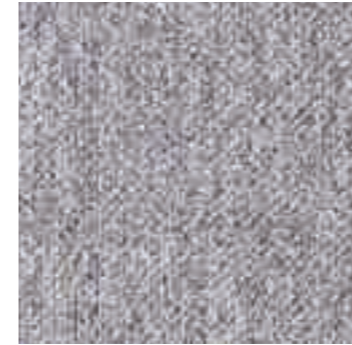


Expression 6414241  
Relined 6444541  
Cobalt SDN 64041

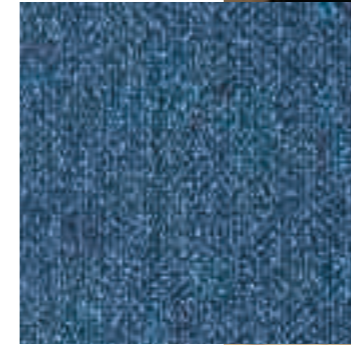


Cobalt SDN 64065  
 Expression 6416540  
 Cobalt SDN 64040

## Mixed organics



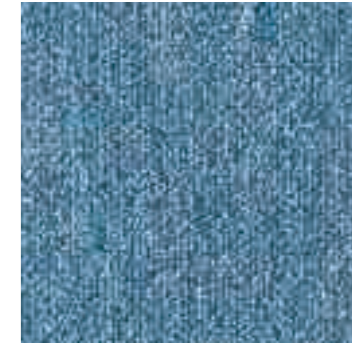
Cobalt SDN 64040



Cobalt SDN 64065



Cobalt SDN 64033



Cobalt SDN 64063



**Pantone**  
 18-1142 TCX  
 Leather Brown



Expression 6416540



6414110 LRV 24,15



6414441 LRV 16,07



6414241 LRV 13,92



6414240 LRV 14,20



6414544 LRV 10,61



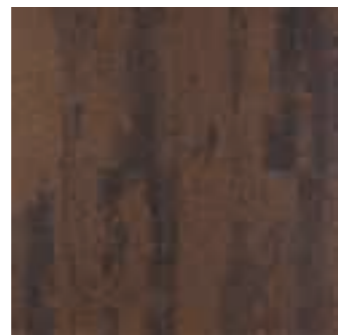
6419640 LRV 8,85



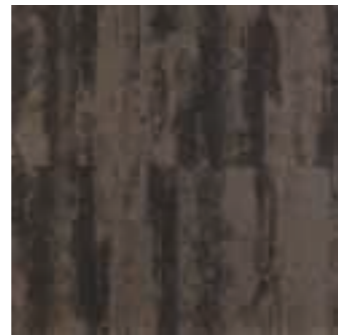
6413120 LRV 14,98



6415044 LRV 9,59



6413233 LRV 5,19



6415130 LRV 5,38



6415145 LRV 6,53



6415550 LRV 4,13



6416140 LRV 13,30



6416240 LRV 10,65



6416340 LRV 11,17



6416540 LRV 10,21



Expression 6415145  
Expression 6414240  
Cobalt SDN 64042

## Technical details

**Manufacturing type**  
tufted 1/10"

**Construction**  
structured loop pile

**Pile composition**  
100% PA 6

**Pile weight**  
650 g/m<sup>2</sup> (+/-)

**Total weight**  
4.300 g/m<sup>2</sup> (+/-)

**Pile height**  
4,0 mm (+/-)

**Total height**  
7,0 mm (+/-)

**Size**  
50 x 50 cm

**Classification**  
33 heavy commercial

**Fire resistance**  
Bfl-S1

**Pattern repeat**  
249 x 278 cm



Carpet tile

Wall-to-wall



Grunge 6423233

concrete look  
industrial  
modern

## Grunge

Grunge is a **bold, industrial and tough design**. The concrete pattern gives a unique look to any interior. Mix and match Grunge with Cobalt SDN's uni colours to design a distinctive flooring concept. The collection is available in 15 different colours that contrast with the rug's industrial look.



Grunge 6423233  
Cobalt SDN 64033



6424110 LRV 23,66



6424441 LRV 15,42



6424240 LRV 12,98



6424241 LRV 13,44



6424544 LRV 9,94



6425044 LRV 8,09



6425145 LRV 5,77



6425550 LRV 3,75



6425130 LRV 5,15



6423233 LRV 4,75



6423120 LRV 14,28



6426140 LRV 11,33



6426240 LRV 8,83



6426563 LRV 5,11



6427073 LRV 6,87

## Technical details

**Manufacturing type**  
tufted 1/10"

**Construction**  
structured loop pile

**Pile composition**  
100% PA 6

**Pile weight**  
650 g/m<sup>2</sup> (+/-)

**Total weight**  
4.300 g/m<sup>2</sup> (+/-)

**Pile height**  
4,0 mm (+/-)

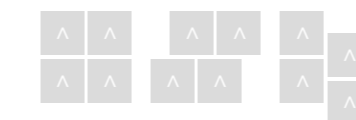
**Total height**  
7,0 mm (+/-)

**Size**  
50 x 50 cm

**Classification**  
33 heavy commercial

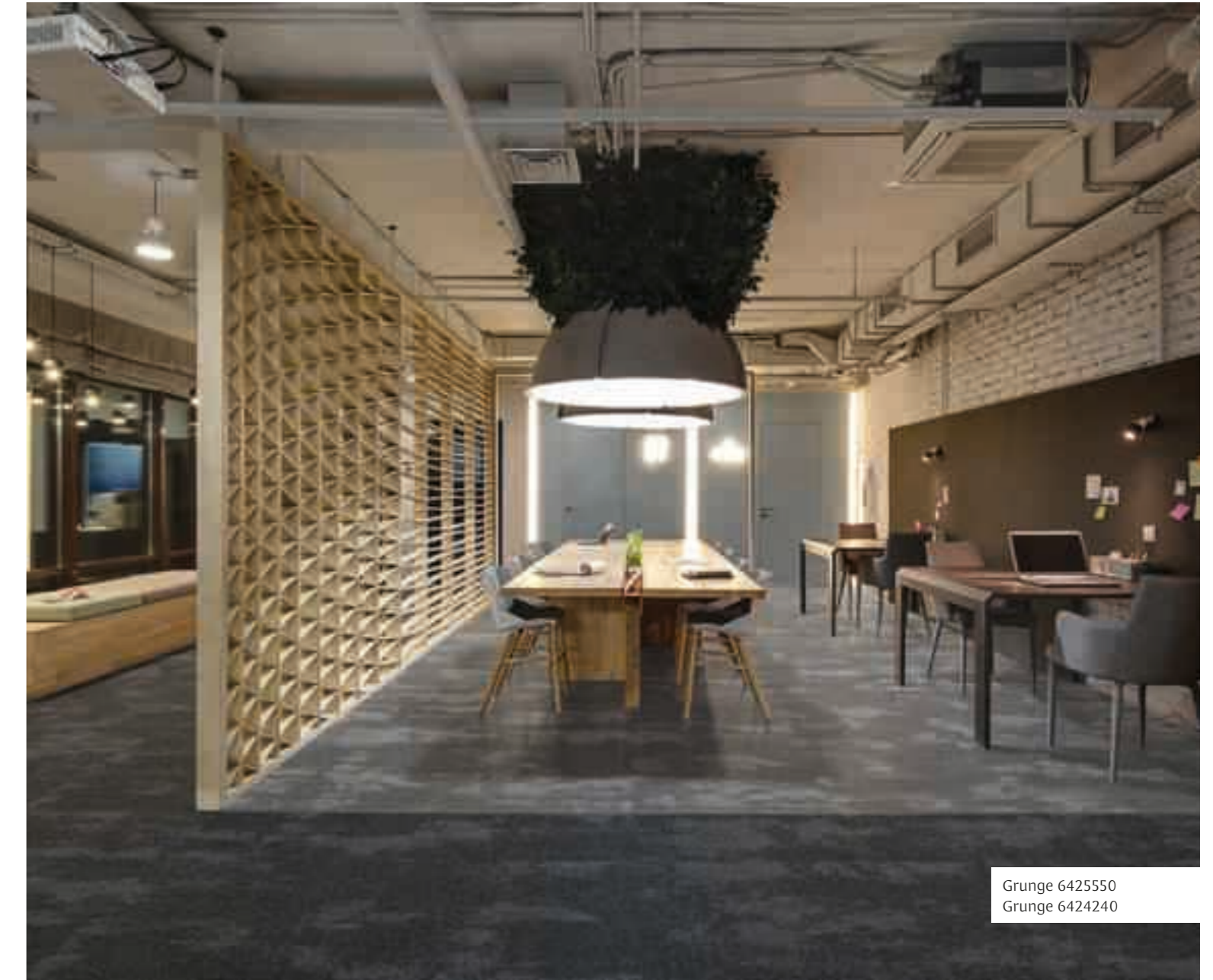
**Fire resistance**  
Bfl-S1

**Pattern repeat**  
203 x 111 cm



 Carpet tile

 Wall-to-wall



Grunge 6425550  
Grunge 6424240



Hexagon Art 6434441

honeycomb  
mix & match  
versatile

## Hexagon Art

Hexagon Art has **an original design that draws your gaze to the floor**. The stylish honeycomb pattern fits perfectly in hospitality and office environments. Hexagon Art is available in 16 different colours, ranging from organic to bright shades. Can it be a bit more exciting? Combine the bold print with the matching uni colours from the Cobalt SDN collection. That way, you create a unique flooring concept.



Hexagon Art 6434441

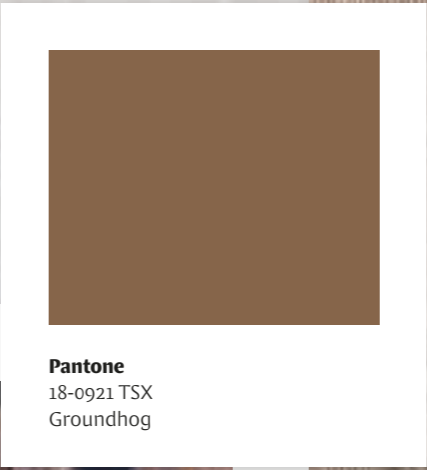


Hexagon Art 6433120  
Cobalt SDN 64020

## Cozy geometrics



Cobalt SDN 64031



**Pantone**  
18-0921 TSX  
Groundhog



Cobalt SDN 64020



Hexagon Art 6433120



6434110 LRV 24,64



6434441 LRV 16,24



6434240 LRV 14,27



6434241 LRV 15,07



6435044 LRV 10,04



6433120 LRV 17,21



6433233 LRV 5,20



6435130 LRV 5,81



6435145 LRV 6,41



6435550 LRV 4,42



6436140 LRV 13,70



6436240 LRV 10,88



6436340 LRV 12,23

## Technical details

**Manufacturing type**  
tufted 1/10"

**Construction**  
structured loop pile

**Pile composition**  
100% PA 6

**Pile weight**  
650 g/m<sup>2</sup> (+/-)

**Total weight**  
4.300 g/m<sup>2</sup> (+/-)

**Pile height**  
4,0 mm (+/-)

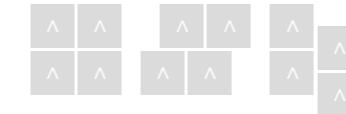
**Total height**  
7,0 mm (+/-)

**Size**  
50 x 50 cm

**Classification**  
33 heavy commercial

**Fire resistance**  
Bfl-S1

**Pattern repeat**  
203 x 167 cm



 Carpet tile

 Wall-to-wall



Hexagon Art 6436240  
Hexagon Art 6434241



Lisbon SDN 66560

classic  
hard-wearing  
reliable

## Lisbon SDN

Lisbon SDN **combines sturdiness with a classic look** thanks to its velour texture. The carpet is popular in the hospitality sector, public spaces and offices. The short pile design makes the collection extremely durable. Lisbon SDN can take a beating. Choose from 16 different colours, ranging from neutral to brighter tones.



Lisbon SDN 66560  
Lisbon SDN 66562



66541 LRV 15,07



66545 LRV 6,57



66542 LRV 8,49



66550 LRV 4,53



66551 LRV 4,23



66562 LRV 4,07



66555 LRV 2,36



66531 LRV 8,59



66530 LRV 6,12



66533 LRV 4,59



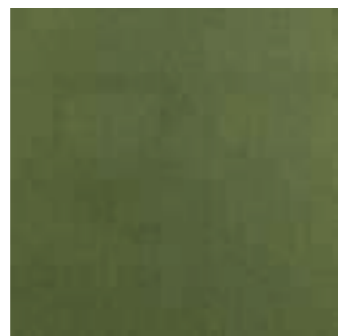
66580 LRV 4,15



66538 LRV 6,56



66549 LRV 15,38



66573 LRV 7,37



66570 LRV 3,54



66560 LRV 2,97



Lisbon SDN 66562  
Lisbon SDN 66549

## Technical details

**Manufacturing type**  
tufted 1/10"

**Construction**  
cut pile

**Pile composition**  
100% PA 6 SDN

**Pile weight**  
700 g/m<sup>2</sup> (+/-)

**Total weight**  
4.300 g/m<sup>2</sup> (+/-)

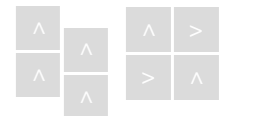
**Pile height**  
4,5 mm (+/-)

**Total height**  
7,0 mm (+/-)

**Size**  
50 x 50 cm

**Classification**  
33 heavy commercial

**Fire resistance**  
Bfl-S1



Carpet tile

Wall-to-wall



Matora 65424

**durable**  
**high-quality residential**  
**softness**

## Matora

Matora has a **playful texture** that makes the carpet suitable for high-end residential projects. It also comes into its own in the hospitality sector. Matora is the little sister of Almyra, Soneva and Medina. We use the same core yarn in production. The colours Bora Bora, Wyoming and Whale Bay also feature in this collection. Like the New Worlds collections, Matora (Primo) is an ecological choice; the carpet is made of 100% regenerated ECONYL® yarn. First-class softness and sustainability in one.



Matora 65424



65411 LRV 42,82



65420 LRV 35,82



65424 LRV 26,03



65426 LRV 24,40



65430 LRV 14,61



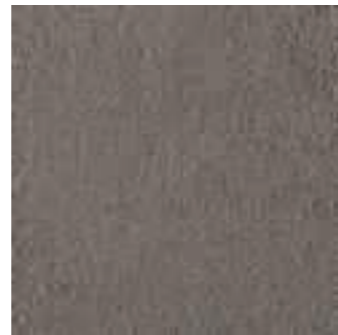
65431 LRV 8,75



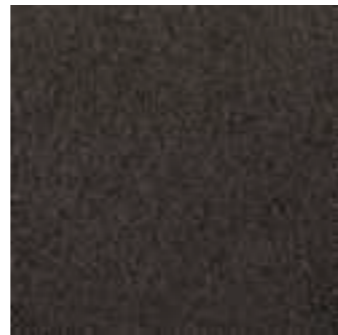
65432 LRV 8,47



65443 LRV 32,91



65444 LRV 16,52



65445 LRV 7,30



65455 LRV 2,76

## Technical details

**Manufacturing type**  
tufted 1/8"

**Construction**  
cut pile (frisé)

**Pile composition**  
100% PA 6 - Econyl® - heatset

**Pile weight**  
1.600 g/m<sup>2</sup> (+/-)

**Total weight**  
2.400 g/m<sup>2</sup> (+/-)

**Pile height**  
8,0 mm (+/-)

**Total height**  
10,0 mm (+/-)

**Size**  
400 cm

**Classification**  
33 heavy commercial

**Fire resistance**  
Cfl-S1

**ECONYL®**  
REGENERATED NYLON

 Wall-to-wall





Madera Primo 65543

**durable**  
**high-quality residential**  
**luxurious**

## Madera Primo

Madera Primo has **a lush texture** that makes the carpet suitable for high-end residential projects. It also comes into its own in the hospitality sector. Its higher pile and density gives it a more luxurious appearance. You can count on the best performance thanks to the resilient three-thread solution dyed yarn. Choose from 11 timeless colours.



Madera Primo 65543



65511

LRV 42,82



65520

LRV 35,82



65524

LRV 26,03



65526

LRV 24,40



65530

LRV 14,61



65531

LRV 8,75



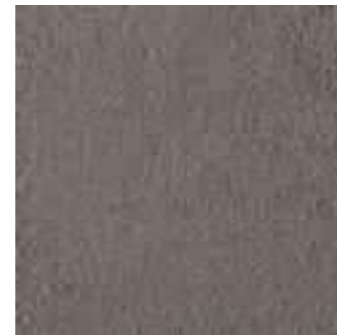
65532

LRV 8,47



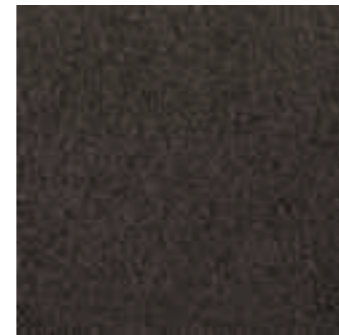
65543

LRV 32,91



65544

LRV 16,52



65545

LRV 7,30



65555

LRV 2,76

## Technical details

**Manufacturing type**  
tufted 1/8"

**Construction**  
cut pile (frisé)

**Pile composition**  
100% PA 6 - Econyl® - heatset

**Pile weight**  
2.000 g/m<sup>2</sup> (+/-)

**Total weight**  
2.800 g/m<sup>2</sup> (+/-)

**Pile height**  
9,0 mm (+/-)

**Total height**  
11,0 mm (+/-)

**Size**  
400 cm

**Classification**  
33 heavy commercial

**Fire resistance**  
Cfl-S1



Rug



Wall-to-wall



Matera Primo 65532





Medina 65820

hand tufted look  
luxurious  
soft

## Medina

Medina has a **playful rib effect that mimics the look of a hand-tufted carpet**. The collection has usage class 33, making it well suited to high-end residential and hospitality environments. Medina belongs between Almyra, Soneva, Matera , Matera Primo and Zalina as we use the same core yarn in production. Do ‘Bora Bora’, ‘Wyoming’ and ‘Whale Bay’ already sound familiar to you? That’s no coincidence, they recur in every New Worlds collection.



Medina 65820



65811

LRV 46,89



65820

LRV 36,40



65824

LRV 23,23



65840

LRV 38,16



65842

LRV 30,28



65847

LRV 25,52

## Technical details

**Manufacturing type**  
tufted 1/10"

**Construction**  
2-ply rib velvet

**Pile composition**  
100% PA 6 - Econyl®

**Pile weight**  
1.950 g/m<sup>2</sup> (+/-)

**Total weight**  
2.800 g/m<sup>2</sup> (+/-)

**Pile height**  
11,5 mm (+/-)

**Total height**  
13,0 mm (+/-)

**Size**  
400 cm

**Classification**  
33 heavy commercial

**Fire resistance**  
Cfl-S1



Rug



Wall-to-wall



Medina 65820



Milano II 60950

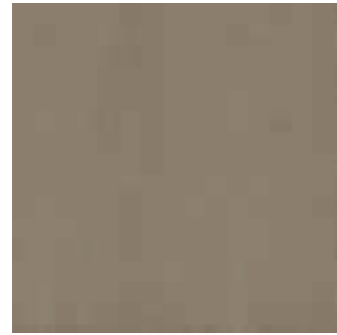
elegant  
solid  
timeless

## Milano II

Milano II is **a timeless classic thanks to its pindot design**. The collection fits any interior, from commercial settings to the hospitality sector and office spaces. Milano II offers elegance and class with a modern touch. The solid design also makes the carpet colourfast, stain-resistant and soundabsorbing. The collection consists of 14 solution dyed colours.



Milano II 60960



60920

LRV 14,24



60938

LRV 7,91



60931

LRV 4,64



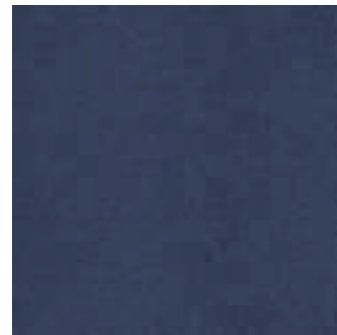
60980

LRV 4,60



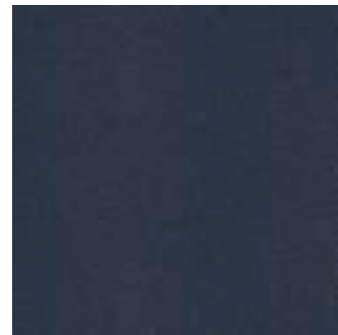
60981

LRV 5,25



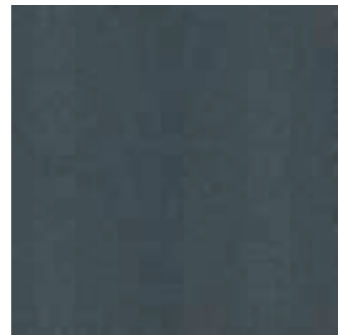
60960

LRV 4,49



60964

LRV 4,47



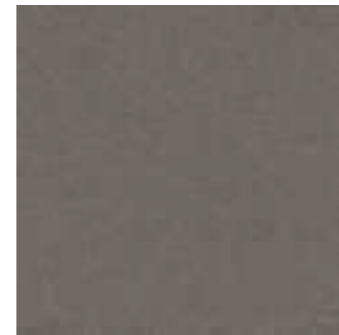
60976

LRV 6,83



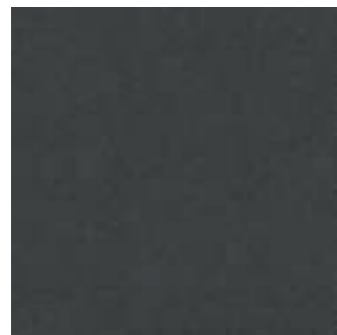
60940

LRV 11,01



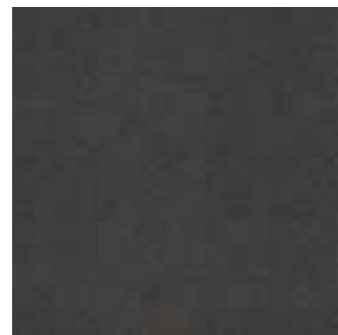
60922

LRV 11,65



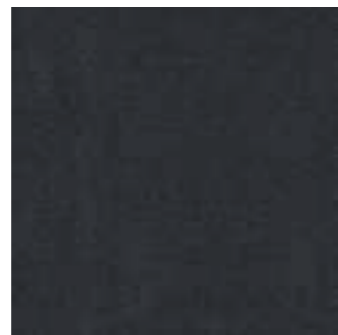
60942

LRV 5,67



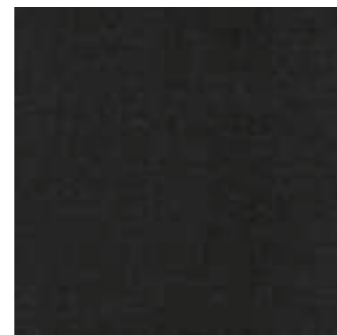
60925

LRV 5,83



60950

LRV 4,19



60951

LRV 3,74

## Technical details

**Manufacturing type**  
tufted 1/10"

**Construction**  
coc cut pile

**Pile composition**  
100% PA 6 BCF

**Pile weight**  
800 g/m<sup>2</sup> (+/-)

**Total weight**  
4.450 g/m<sup>2</sup> (+/-)

**Pile height**  
4,5 mm (+/-)

**Total height**  
7,0 mm (+/-)

**Size**  
50 x 50 cm

**Classification**  
33 heavy commercial

**Fire resistance**  
Bfl-S1



 Carpet tile

 Wall-to-wall



Milano II 60950



Nimbus 966261

airness  
movement  
subtlety

## Nimbus

Nimbus, **part of the Elemental Design Collections**, adds softness to your interiors. The subtle design provides a hint of movement, perfect for those who love sophistication with a twist. The carpet is composed of TRIFORMA™+ yarn, a guarantee of colourfastness, ease of care, and sustainability. Moreover, the collection is dirt-resistant thanks to its smart-structured yarn.

The structure is playful, and like Sienna and Elemental, the pile height is the same, allowing you to seamlessly combine the designs with the solid colours from the collections. Opt for tone-on-tone tranquillity or accentuate with contrasts; the combination possibilities are endless. Interested in something a bit extra? Then go for one of the unique tricolour designs. Add an extra splash of colour such as orange, aqua, or purple.

Nimbus is crafted with TRIFORMA™+ for exceptional performance and refined elegance. Its innovative polymer enhances cleanability and preserves the carpet's appeal over time.



Nimbus 966162  
Nimbus 966261  
Elemental 9561  
Elemental 9562



964544 LRV 9,76



96454467 LRV 9,15



965045 LRV 6,63



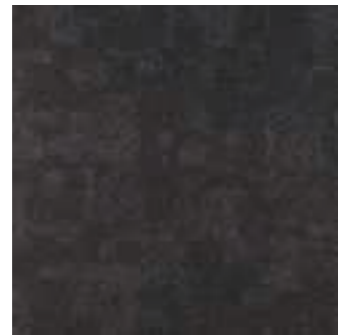
965051 LRV 5,09



965150 LRV 4,44



96504568 LRV 6,55



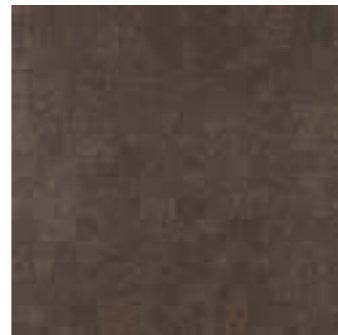
96515097 LRV 4,34



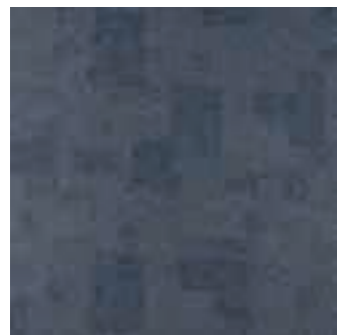
963031 LRV 8,50



963130 LRV 9,53



96303137 LRV 8,40



966162 LRV 8,30



966261 LRV 6,73

## Technical details

**Manufacturing type**  
tufted 1/10"

**Construction**  
structured loop pile

**Pile composition**  
100% PA 6 - TRIFORMA™+

**Pile weight**  
650 g/m<sup>2</sup> (+/-)

**Total weight**  
4.300 g/m<sup>2</sup> (+/-)

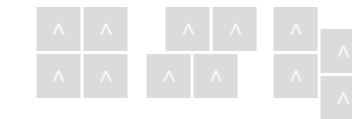
**Pile height**  
4,0 mm (+/-)

**Total height**  
7,0 mm (+/-)

**Size**  
50 x 50 cm

**Classification**  
33 heavy commercial

**Fire resistance**  
Bfl-S1



**TRIFORMA +**

 Carpet tile

 Wall-to-wall



Nimbus 965150  
Nimbus 96515097



Oak 59432

**durable**  
**organic look**  
**wood effect**

## Oak

Oak **brings nature into any interior.** We got the idea for this collection from popular wooden floors. We incorporated the beauty of nature into a wood-effect carpet plank. Yes, a plank, not a standard tile. The plank shape emphasises the natural look of the carpet. In addition to being unique, Oak is also sustainable. The collection is made from regenerated ECONYL® yarn. This unique floor concept lets interior designers indulge themselves. Oak is suitable for commercial use. Thanks to its organic and warm appearance, it is a winner in public spaces. It is equally suitable for a lobby, entrance hall or town hall.



Oak 59432



59410 LRV 24,21



59411 LRV 21,18



59420 LRV 18,54



59423 LRV 8,88



59425 LRV 8,55



59432 LRV 5,98



59434 LRV 5,30



59441 LRV 13,43



59442 LRV 7,09



59450 LRV 6,12



59440 LRV 12,74

## Technical details

**Manufacturing type**  
tufted 1/10"

**Construction**  
structured loop pile

**Pile composition**  
100% PA 6 - Econyl®

**Pile weight**  
800 g/m<sup>2</sup> (+/-)

**Total weight**  
4.550 g/m<sup>2</sup> (+/-)

**Pile height**  
5,0 mm (+/-)

**Total height**  
8,0 mm (+/-)

**Size**  
25 x 100 cm

**Classification**  
33 heavy commercial

**Fire resistance**  
Bfl-S1

**Pattern repeat**  
203 x 250 cm



 Plank tile





Opal 41620

## Opal

Opal has **a residential quality but is easily at home in commercial spaces.** The structured yarn creates a playful character for commercial settings. In addition, the shaggy look of Opal makes the carpet ideal for cutting as a loose carpet. The collection is available in 9 warm colours, ranging from cream to dark brown.

functional  
shaggy  
texture



Opal 41620



46110

LRV 54,74



46111

LRV 17,72



46120

LRV 31,18



46122

LRV 19,64



46124

LRV 15,33



46130

LRV 15,78



46132

LRV 3,49



46142

LRV 10,75



46155

LRV 3,08

## Technical details

**Manufacturing type**  
tufted 5/16"

**Construction**  
shaggy

**Pile composition**  
100% PA

**Pile weight**  
800 g/m<sup>2</sup> (+/-)

**Total weight**  
1.600 g/m<sup>2</sup> (+/-)

**Pile height**  
20 mm (+/-)

**Total height**  
22 mm (+/-)

**Size**  
400 cm

**Classification**  
22+ heavy domestic

**Fire resistance**  
Cfl-S1



Wall-to-wall



Opal 41620



President E 65323

result-oriented  
solid  
sustainable

## President E

President E **combines durability with superior quality**. The updated colour palette makes interesting designs whilst the structure creates an elegant look. President E is made from Solution Dyed Nylon and is the standard for floor coverings in both commercial and residential areas.

The frisé cut pile creates a neat finish and interesting look without sacrificing on performance. President E is made of 100% regenerable ECONYL® yarn. Choose from 17 contemporary colours.



President E 65323



65310 LRV 22,25



65323 LRV 17,72



65340 LRV 14,48



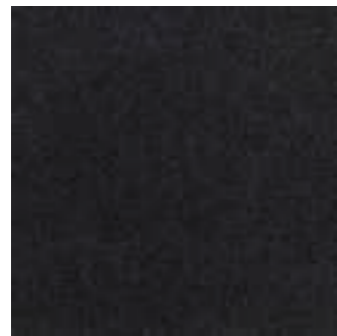
65341 LRV 9,22



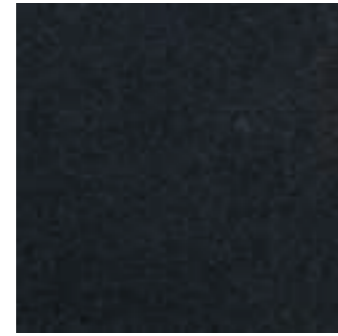
65346 LRV 10,14



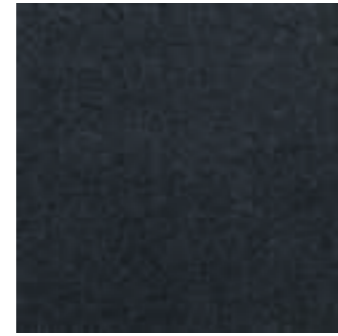
65332 LRV 6,55



65350 LRV 4,46



65351 LRV 3,50



65345 LRV 4,73



65344 LRV 5,88



65360 LRV 7,69



65320 LRV 17,76



65363 LRV 7,97



65370 LRV 10,65



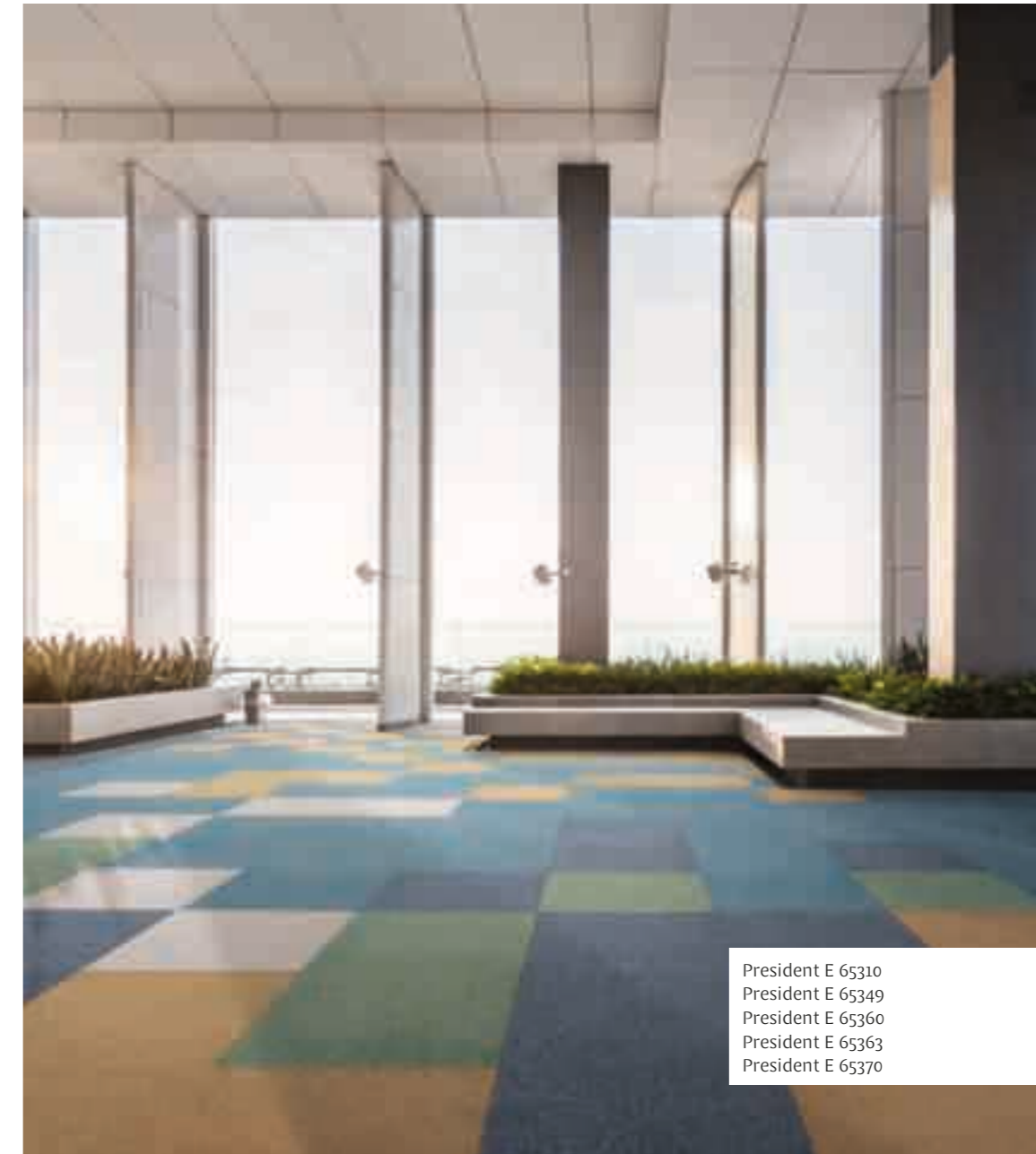
65338 LRV 12,43



65349 LRV 13,13



65322 LRV 11,88



## Technical details

**Manufacturing type**  
tufted 1/10"

**Construction**  
3-ply cut pile

**Pile composition**  
100% PA 6 - Econyl® - heatset

**Pile weight**  
1.300 g/m<sup>2</sup> (+/-)

**Total weight**  
4.800 g/m<sup>2</sup> (+/-)

**Pile height**  
5,5 mm (+/-)

**Total height**  
8,0 mm (+/-)

**Size**  
50 x 50 cm

**Classification**  
33 heavy commercial

**Fire resistance**  
Bfl-S1



**ECONYL®**  
REGENERATED NYLON

Carpet tile

Wall-to-wall



Relined 6447073

**contrast**  
**striped design**  
**versatile**

## Relined

Relined adds something extra to any office space. **The design with soft linear contrast creates an interesting and contemporary look.** The collection fits perfectly in office environments, the hospitality sector and in public spaces. Mix and match Relined with the Cobalt SDN uni colours to design a unique flooring concept.

The collection consists of 14 playful colour options ranging from greige to vibrant shades. Relined is designed with high-quality, durable materials that promote user well-being through good comfort underfoot and quiet acoustics.



Wall-to-wall  
Relined 6447073



6444110 LRV 24,25



6443120 LRV 16,94



6443233 LRV 5,22



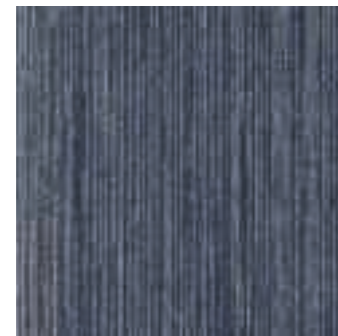
6443230 LRV 5,96



6448038 LRV 7,54



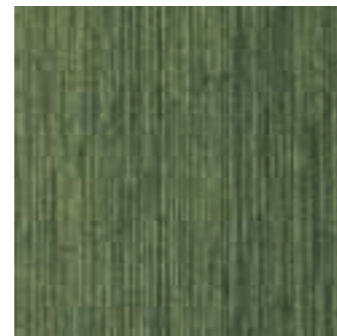
6446063 LRV 5,76



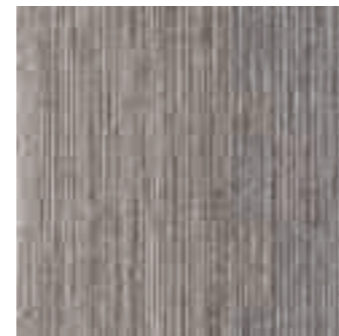
6446061 LRV 6,75



6446140 LRV 13,06



6447073 LRV 7,98



6444541 LRV 14,21



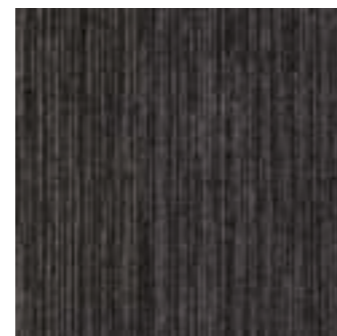
6444441 LRV 16,32



6445042 LRV 8,52



6445142 LRV 6,83



6445550 LRV 4,19

## Technical details

**Manufacturing type**  
tufted 1/10"

**Construction**  
structured loop pile

**Pile composition**  
100% PA 6

**Pile weight**  
600 g/m<sup>2</sup> (+/-)

**Total weight**  
4.300 g/m<sup>2</sup> (+/-)

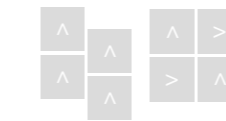
**Pile height**  
4,0 mm (+/-)

**Total height**  
7,0 mm (+/-)

**Size**  
50 x 50 cm

**Classification**  
33 heavy commercial

**Fire resistance**  
Bfl-S1



 Carpet tile

 Wall-to-wall



Relined 6445042



Shoreline 65022

expressive  
natural  
texture

## Shoreline

Shoreline is **the ecological variant of Expression**. The ECONYL® yarn makes this collection a sustainable gem. Like Expression, Shoreline is daring and expressive. The ship's wood or paintbrush pattern catches the eye and holds the attention. The pattern on the carpet creates an interesting floor concept. Shoreline consists of 12 colour options, ranging from warm, natural tones to some fresh, bright colours.



Shoreline 65022  
Shoreline 65070





65020 LRV 24,42



65021 LRV 21,86



65022 LRV 13,66



65030 LRV 7,84



65038 LRV 11,77



65040 LRV 23,88



65041 LRV 17,57



65042 LRV 12,40



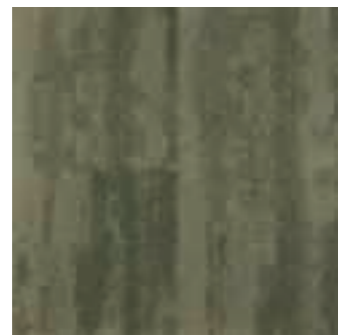
65050 LRV 7,57



65060 LRV 11,09



65066 LRV 11,42



65070 LRV 10,50

## Technical details

**Manufacturing type**  
tufted 1/10"

**Construction**  
structured loop pile

**Pile composition**  
100% PA 6 - Econyl®

**Pile weight**  
650 g/m<sup>2</sup> (+/-)

**Total weight**  
4.400 g/m<sup>2</sup> (+/-)

**Pile height**  
4,0 mm (+/-)

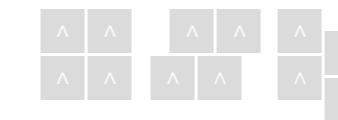
**Total height**  
7,0 mm (+/-)

**Size**  
50 x 50 cm

**Classification**  
33 heavy commercial

**Fire resistance**  
Bfl-S1

**Pattern repeat**  
249 x 278 cm



Carpet tile

Wall-to-wall



Shoreline 65021  
President E 65350



Sienna 98454437

## Sienna

Sienna is **part of the Elemental Design Collections**, along with Elemental and Nimbus. It is a visually powerful, layered pattern. The loop pile construction and the use of TRIFORMA™+ yarn make this collection not only visually strong, but also extremely hard-wearing and low maintenance. A floor with spirit and practicality. Moreover, the collection is dirt-resistant thanks to its smart-structured yarn.

This collection is designed to give interiors depth without being overpowering. The colour palette and designs are precisely matched to Elemental's solid colours, so you can effortlessly combine them into one flowing floor concept. The even pile height between designs and basic colours thereby ensures a flawless technical fit. Interested in something a bit extra? Then go for one of the unique tricolour designs with an extra splash of colour. Choose from orange, aqua, royal blue, bright green, or purple.

Sienna benefits from TRIFORMA™+ innovation, delivering superior durability and easy care. The yarn's advanced polymer guarantees lasting aesthetics and resistance to acid-based stains.

contrast  
depth  
flow



Sienna 984544  
Sienna 98454437



983031 LRV 8,17



983130 LRV 9,84



984445 LRV 11,63



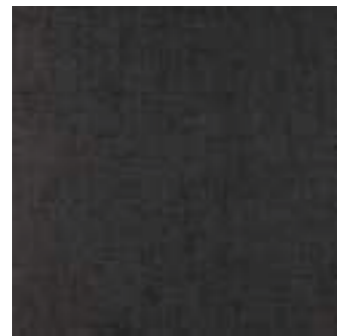
984544 LRV 9,60



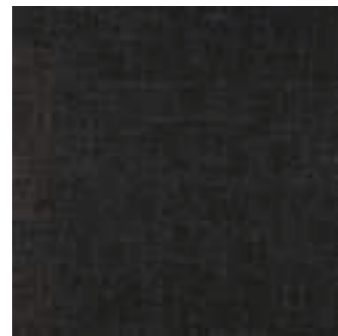
984550 LRV 7,85



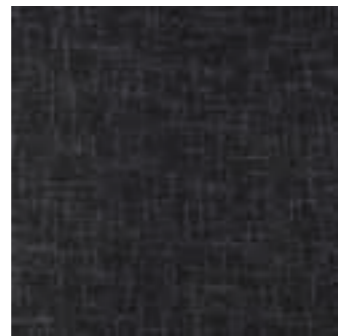
98626168 LRV 7,01



985051 LRV 5,24



985150 LRV 4,22



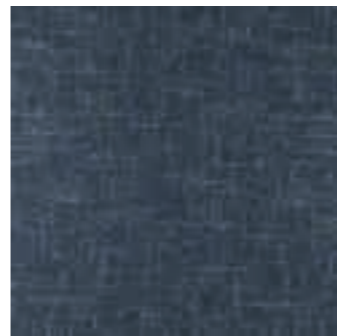
985550 LRV 3,46



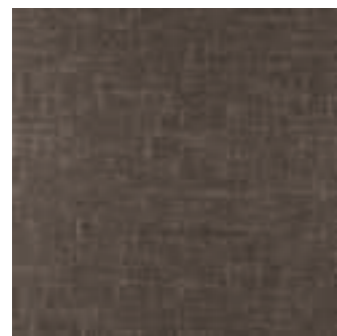
986162 LRV 8,44



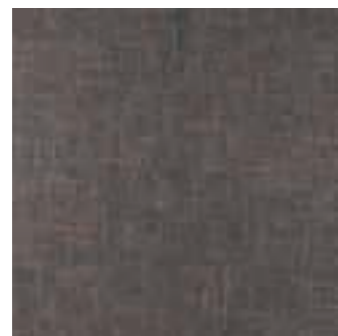
986261 LRV 6,45



98626177 LRV 7,09



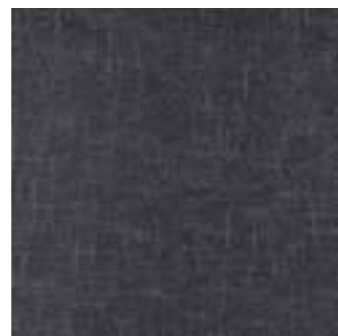
98303177 LRV 8,72



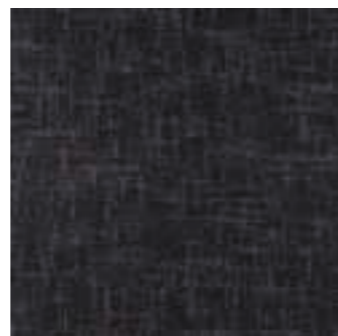
98454437 LRV 9,94



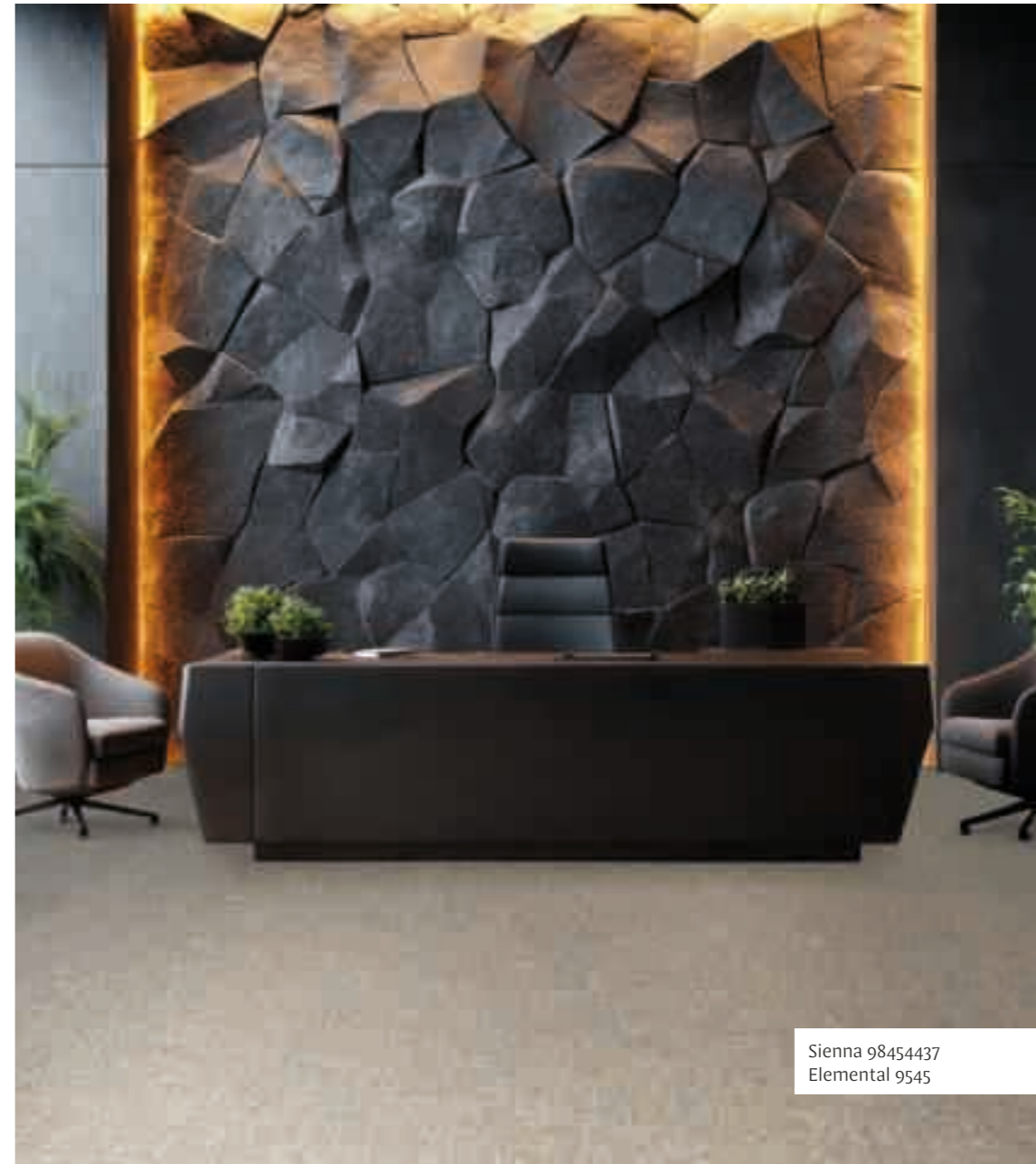
98454468 LRV 9,67



98504567 LRV 6,61



98555097 LRV 3,69



Sienna 98454437  
Elemental 9545

## Technical details

**Manufacturing type**  
tufted 1/10"

**Construction**  
structured loop pile

**Pile composition**  
100% PA 6 - TRIFORMA™+

**Pile weight**  
650 g/m<sup>2</sup> (+/-)

**Total weight**  
4.300 g/m<sup>2</sup> (+/-)

**Pile height**  
4,0 mm (+/-)

**Total height**  
7,0 mm (+/-)

**Size**  
50 x 50 cm

**Classification**  
33 heavy commercial

**Fire resistance**  
Bfl-S1



**TRIFORMA +**

Carpet tile

Wall-to-wall



comfort  
creativity  
expressive

## Signature Collections

**Three exclusive carpet collections** combine refined design with understated luxury. Each one features unique patterns and is made with sustainable ECONYL® yarn, for those who seek character, quality and conscious design in perfect harmony.

### Signature Origin

The first collection in the Signature family, an entry-level quality. Think luxurious patterns printed on a soft cut pile with a **pile weight of 900 g/m<sup>2</sup>**. This is the perfect choice for hotels, lobbies, corridors or elegant residential projects.

### Signature Prestige

A higher **pile weight (1200 g/m<sup>2</sup>)**, the cute pile and an even richer look and feel make Signature Prestige the most sumptuous in the range. Ideal for reception areas, suites or prestigious rooms.

### Signature Art

Signature Art brings expressive designs to life through a **robust loop pile (780 g/m<sup>2</sup>)**. The structured surface creates a graphic effect that adds texture and movement to your floor. This is perfect for any hospitality setting. From lobbies to connecting corridors.





0102 - Organic Code



0103 - Organic Code



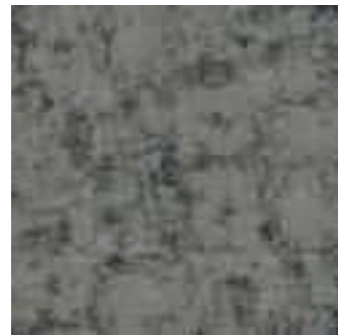
0104 - Organic Code



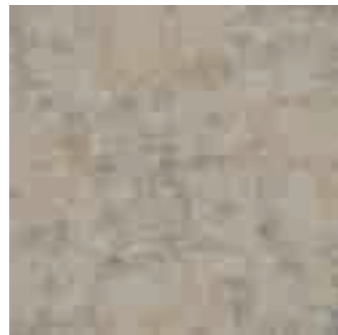
0105 - Organic Code



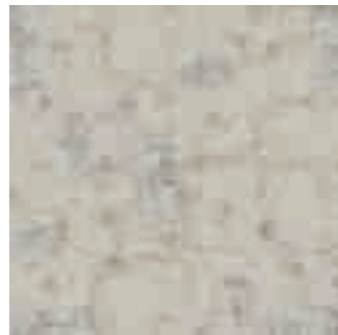
0201 - Marble Echoes



0202 - Marble Echoes



0204 - Marble Echoes



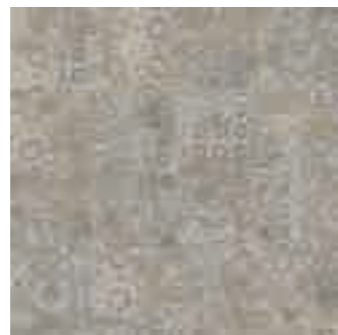
0205 - Marble Echoes



0302 - Baroque Bloom



0303 - Baroque Bloom



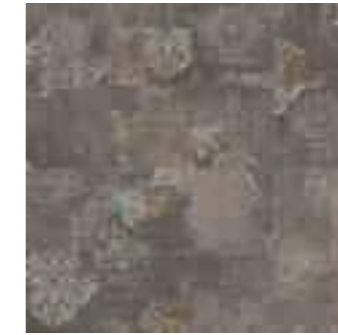
0304 - Baroque Bloom



0305 - Baroque Bloom



0401 - Loom Lace



0402 - Loom Lace



Loom Lace - 0403



0405 - Loom Lace



0604 - Geometric Grainline



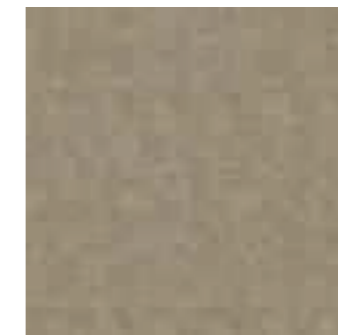
0605 - Geometric Grainline



0606 - Geometric Grainline



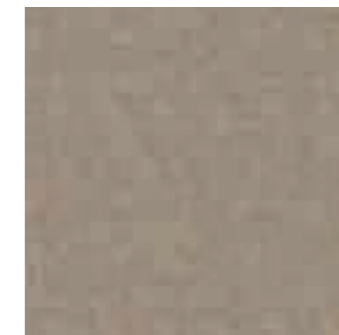
0607 - Geometric Grainline



0702 - Mosaic Gridline



0704 - Mosaic Gridline



0706 - Mosaic Gridline



0707 - Mosaic Gridline

The colours in the photo may differ from reality.



0901

The colours in the photo may differ from reality.



0801 - Fresco Canvas



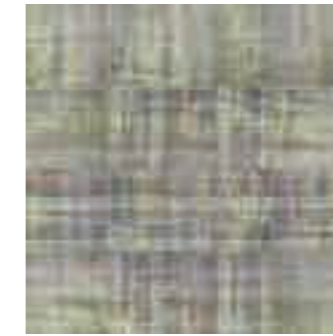
08031 - Fresco Canvas



08041 - Fresco Canvas



08051 - Fresco Canvas



09011 - Deco Weave



0902 - Deco Weave



0904 - Deco Weave



0905 - Deco Weave



1001 - Offset Art



1003 - Offset Art



1004 - Offset Art



1005 - Offset Art



1101 - Structured Fade



1102 - Structured Fade



1104 - Structured Fade



1105 - Structured Fade



1401 - Improv Patina



1403 - Improv Patina



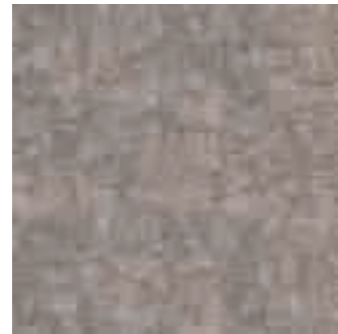
1404 - Improv Patina



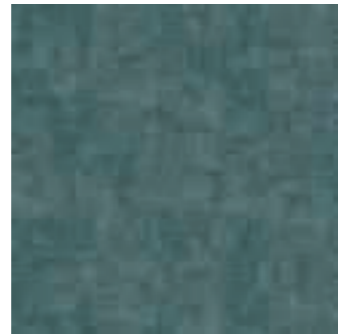
2003 - Improv Patina



2102 - Modern Etch



2103 - Modern Etch



2104 - Modern Etch



2105 - Modern Etch

The colours in the photo may differ from reality.



1001



3001 - Arabesque Aura



3002 - Arabesque Aura



3003 - Arabesque Aura



3006 - Arabesque Aura



3103 - Tranquil Tweed



3110 - Tranquil Tweed



3112 - Tranquil Tweed



3116 - Tranquil Tweed



3210 - Desert Mirage



3211 - Desert Mirage



3212 - Desert Mirage



3213 - Desert Mirage

The colours in the photo may differ from reality.

## Technical details

### Signature Origin

**Manufacturing type**  
tufted 1/10"

**Construction**  
cut pile - saxony

**Pile composition**  
100% PA 6 - Econyl®

**Pile weight**  
900 g/m<sup>2</sup> (+/-)

**Total weight**  
4.400 g/m<sup>2</sup> (+/-)

**Pile height**  
5,0 mm (+/-)

**Total height**  
6,5 mm (+/-)

**Size**  
50 x 50 cm

**Classification**  
33 heavy commercial

**Fire resistance**  
Bfl-S1

### Signature Prestige

**Manufacturing type**  
tufted 1/10"

**Construction**  
cut pile - saxony

**Pile composition**  
100% PA 6 - Econyl®

**Pile weight**  
1.200 g/m<sup>2</sup> (+/-)

**Total weight**  
4.700 g/m<sup>2</sup> (+/-)

**Pile height**  
6,0 mm (+/-)

**Total height**  
8,5 mm (+/-)

**Size**  
50 x 50 cm

**Classification**  
33 heavy commercial

**Fire resistance**  
Bfl-S1

### Signature Art

**Manufacturing type**  
tufted 1/10"

**Construction**  
structured loop pile

**Pile composition**  
100% PA 6 - Econyl®

**Pile weight**  
780 g/m<sup>2</sup> (+/-)

**Total weight**  
4.400 g/m<sup>2</sup> (+/-)

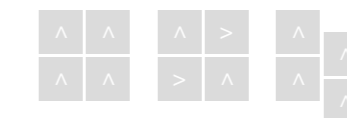
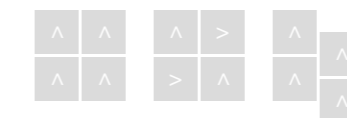
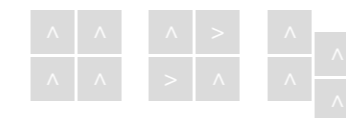
**Pile height**  
5,0 mm (+/-)

**Total height**  
6,5 mm (+/-)

**Size**  
50 x 50 cm

**Classification**  
33 heavy commercial

**Fire resistance**  
Bfl-S1



0402



## Soneva

Soneva takes **softness and luxury to the next level.** This velvet carpet with a soft touch feels wonderful under your feet. Soneva is also an ecological choice; it is made from 100% regenerated ECONYL® nylon yarn. This means you are choosing luxury and sustainability. Despite its softness, Soneva doesn't compromise on performance thanks to the resilient two-ply solution dyed yarn. Choose from 12 timeless colours to take any commercial flooring project to the next level.

**durable**  
**silky soft**  
**velvet**





62010

LRV 56,96



62011

LRV 46,89



62020

LRV 36,40



62022

LRV 29,45



62024

LRV 24,23



62040

LRV 38,16



62041

LRV 45,48



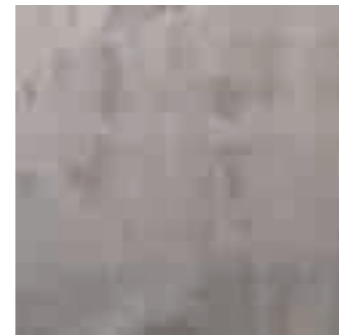
62042

LRV 30,28



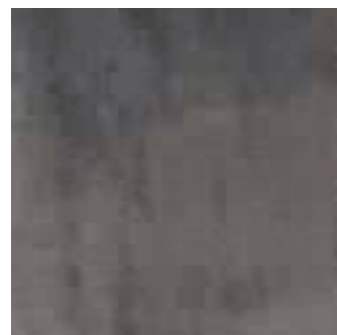
62043

LRV 22,31



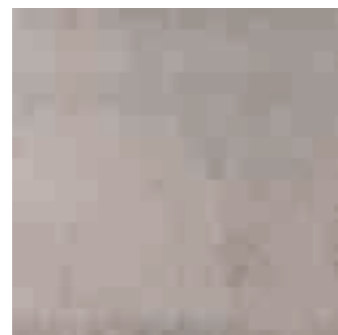
62044

LRV 13,62



62045

LRV 6,53



62047

LRV 25,52

## Technical details

**Manufacturing type**  
tufted 1/10"

**Construction**  
2-ply saxony

**Pile composition**  
100% PA - Econyl®

**Pile weight**  
1.600 g/m<sup>2</sup> (+/-)

**Total weight**  
2.400 g/m<sup>2</sup> (+/-)

**Pile height**  
8,5 mm (+/-)

**Total height**  
10,0 mm (+/-)

**Size**  
400 - 500 cm

**Classification**  
33 heavy commercial

**Fire resistance**  
Cfl-S1



Rug



Wall-to-wall



Soneva 62024





Urban Textures 64921

edgy  
original  
random pattern

## Urban Textures

Urban Textures has a **special criss-cross pattern** that you can use in all directions. The collection makes a statement in a hospitality setting as well as in office rooms. Colour outside the lines with the original design from Urban Textures. A bold yet ecological choice thanks to the regenerable ECONYL® yarn. Urban Textures consists of 13 neutral colours.



Urban Textures 64921  
Urban Textures 64922





64920 LRV 24,42



64921 LRV 21,86



64922 LRV 13,66



64930 LRV 7,84



64938 LRV 11,77



64940 LRV 23,88



64941 LRV 17,57



64942 LRV 12,40



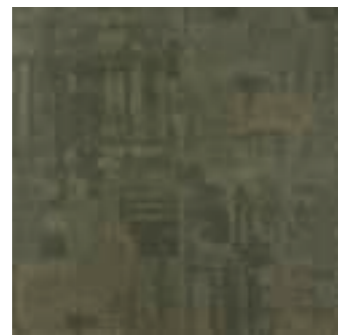
64950 LRV 7,57



64960 LRV 11,09



64966 LRV 11,42



64970 LRV 10,50

## Technical details

**Manufacturing type**  
tufted 1/10"

**Construction**  
structured loop pile

**Pile composition**  
100% PA 6 - Econyl®

**Pile weight**  
600 g/m<sup>2</sup> (+/-)

**Total weight**  
4.300 g/m<sup>2</sup> (+/-)

**Pile height**  
3,5 mm (+/-)

**Total height**  
6,5 mm (+/-)

**Size**  
50 x 50 cm

**Classification**  
33 heavy commercial

**Fire resistance**  
Bfl-S1

**Pattern repeat**  
244 x 200 cm



Carpet tile

Wall-to-wall



Urban Textures 64940  
Urban Textures 64970



Vintage Felina 59820

artistic  
patchwork  
printed

## Vintage

Vintage is perhaps one of Tapibel's **most original collections**. The artistic patchwork prints create a warm atmosphere. The sustainable ECONYL® carpet is originally made white and is then printed with ChromoJet technology. Dare to think outside the box and design your own unique floor concept. Each room can tell its own story using the three unique Vintage collection patterns:

### Felina

A criss-cross pattern that closely resembles typical patchwork.

### Firenze

A static pattern with accents of columns from ancient Florence.

### Ferrara

A calmer weave pattern with bright colour combinations.

The three patterns are available in six coloured prints that you can mix and match.



Vintage Felina 59820



Felina 59820 LRV 23,16



Felina 59840 LRV 17,71



Felina 59842 LRV 13,90



Felina 59871 LRV 21,18



Felina 59884 LRV 20,80



Felina 59899 LRV 21,63



Ferrara 59911 LRV 24,35



Ferrara 59941 LRV 31,39



Ferrara 59960 LRV 23,77



Ferrara 59962 LRV 21,65



Ferrara 59970 LRV 22,61



Ferrara 59976 LRV 25,79



Firenze 60020 LRV 27,64



Firenze 60040 LRV 29,05



Firenze 60042 LRV 21,96



Firenze 60060 LRV 27,38



Firenze 60083 LRV 30,06



Firenze 60084 LRV 19,43



Vintage Firenze 60042

## Technical details

**Manufacturing type**  
tufted 1/10"

**Construction**  
structured loop pile

**Pile composition**  
100% PA 6 - Econyl®

**Pile weight**  
900 g/m<sup>2</sup> (+/-)

**Total weight**  
4.500 g/m<sup>2</sup> (+/-)

**Pile height**  
5,0 mm (+/-)

**Total height**  
7,0 mm (+/-)

**Size**  
50 x 50 cm

**Classification**  
33 heavy commercial

**Fire resistance**  
Bfl-S1

**Pattern repeat**  
Felina: 98,5 x 142,5 cm  
Firenze: 98,5 x 98,5 cm



**ECONYL®**  
REGENERATED NYLON

Carpet tile

Wall-to-wall

## Technical details carpet tiles

| Collection       | Page | Manufacturing type | Pile composition              | Secondary backing          | Pile weight                  | Total weight                 | Pile height  | Total height  | Tuft density                  | Size        |
|------------------|------|--------------------|-------------------------------|----------------------------|------------------------------|------------------------------|--------------|---------------|-------------------------------|-------------|
| Artisan Tweed    | 36   | tufted 1/10"       | 100% PA 6 - Econyl®           | GREENBASE modified bitumen | 650 (+/-) g/m <sup>2</sup>   | 4.400 (+/-) g/m <sup>2</sup> | 4,0 (+/-) mm | 7,0 (+/-) mm  | 192.000 (+/-) /m <sup>2</sup> | 50 x 50 cm  |
| Belina           | 50   | tufted 1/8"        | 100% PA 6 - Econyl® - heatset | GREENBASE modified bitumen | 1.250 (+/-) g/m <sup>2</sup> | 4.800 (+/-) g/m <sup>2</sup> | 9,5 (+/-) mm | 10,5 (+/-) mm | 144.000 (+/-) /m <sup>2</sup> | 50 x 50 cm  |
| Cobalt Creations | 58   | tufted 1/10"       | 100% PA 6                     | GREENBASE modified bitumen | 550 (+/-) g/m <sup>2</sup>   | 4.300 (+/-) g/m <sup>2</sup> | 3,0 (+/-) mm | 6,0 (+/-) mm  | 164.000 (+/-) /m <sup>2</sup> | 50 x 50 cm  |
| Cobalt SDN       | 62   | tufted 1/10"       | 100% PA 6                     | GREENBASE modified bitumen | 550 (+/-) g/m <sup>2</sup>   | 4.300 (+/-) g/m <sup>2</sup> | 3,0 (+/-) mm | 6,0 (+/-) mm  | 164.000 (+/-) /m <sup>2</sup> | 50 x 50 cm  |
| Coral (Lines)    | 68   | tufted 1/10"       | 100% PA 6 BCF                 | GREENBASE modified bitumen | 485 (+/-) g/m <sup>2</sup>   | 4.200 (+/-) g/m <sup>2</sup> | 3,0 (+/-) mm | 5,5 (+/-) mm  | 175.000 (+/-) /m <sup>2</sup> | 50 x 50 cm  |
| Country SDN      | 72   | ultratuft 1/10"    | 100% PA 6                     | GREENBASE modified bitumen | 550 (+/-) g/m <sup>2</sup>   | 4.100 (+/-) g/m <sup>2</sup> | 1,0 (+/-) mm | 5,5 (+/-) mm  | 164.000 (+/-) /m <sup>2</sup> | 50 x 50 cm  |
| Crossline        | 76   | tufted 1/10"       | 100% PA 6                     | GREENBASE modified bitumen | 650 (+/-) g/m <sup>2</sup>   | 4.300 (+/-) g/m <sup>2</sup> | 4,0 (+/-) mm | 7,0 (+/-) mm  | 191.000 (+/-) /m <sup>2</sup> | 50 x 50 cm  |
| Diamond Art      | 80   | tufted 1/10"       | 100% PA 6 - Econyl®           | GREENBASE modified bitumen | 650 (+/-) g/m <sup>2</sup>   | 4.400 (+/-) g/m <sup>2</sup> | 4,0 (+/-) mm | 7,0 (+/-) mm  | 192.000 (+/-) /m <sup>2</sup> | 50 x 50 cm  |
| Diplomat         | 86   | tufted 1/8"        | 100% PA 6 - heatset           | GREENBASE modified bitumen | 1.150 (+/-) g/m <sup>2</sup> | 4.600 (+/-) g/m <sup>2</sup> | 5,5 (+/-) mm | 8,0 (+/-) mm  | 146.000 (+/-) /m <sup>2</sup> | 50 x 50 cm  |
| Earth            | 90   | tufted 1/10"       | 100% PA 6 - Econyl®           | GREENBASE modified bitumen | 800 (+/-) g/m <sup>2</sup>   | 4.550 (+/-) g/m <sup>2</sup> | 5,0 (+/-) mm | 8,0 (+/-) mm  | 190.000 (+/-) /m <sup>2</sup> | 50 x 50 cm  |
| Elemental        | 94   | tufted 1/10"       | 100% PA 6 - TRIFORMA™+        | GREENBASE modified bitumen | 600 (+/-) g/m <sup>2</sup>   | 4.300 (+/-) g/m <sup>2</sup> | 4,0 (+/-) mm | 7,0 (+/-) mm  | 175.000 (+/-) /m <sup>2</sup> | 50 x 50 cm  |
| Expression       | 98   | tufted 1/10"       | 100% PA 6                     | GREENBASE modified bitumen | 650 (+/-) g/m <sup>2</sup>   | 4.300 (+/-) g/m <sup>2</sup> | 4,0 (+/-) mm | 7,0 (+/-) mm  | 191.000 (+/-) /m <sup>2</sup> | 50 x 50 cm  |
| Grunge           | 104  | tufted 1/10"       | 100% PA 6                     | GREENBASE modified bitumen | 650 (+/-) g/m <sup>2</sup>   | 4.300 (+/-) g/m <sup>2</sup> | 4,0 (+/-) mm | 7,0 (+/-) mm  | 191.000 (+/-) /m <sup>2</sup> | 50 x 50 cm  |
| Hexagon Art      | 108  | tufted 1/10"       | 100% PA 6                     | GREENBASE modified bitumen | 650 (+/-) g/m <sup>2</sup>   | 4.300 (+/-) g/m <sup>2</sup> | 4,0 (+/-) mm | 7,0 (+/-) mm  | 191.000 (+/-) /m <sup>2</sup> | 50 x 50 cm  |
| Lisbon SDN       | 114  | tufted 1/10"       | 100% PA 6                     | GREENBASE modified bitumen | 700 (+/-) g/m <sup>2</sup>   | 4.300 (+/-) g/m <sup>2</sup> | 4,5 (+/-) mm | 7,0 (+/-) mm  | 198.750 (+/-) /m <sup>2</sup> | 50 x 50 cm  |
| Milano II        | 132  | tufted 1/10"       | 100% PA 6 BCF                 | GREENBASE modified bitumen | 800 (+/-) g/m <sup>2</sup>   | 4.450 (+/-) g/m <sup>2</sup> | 4,5 (+/-) mm | 7,0 (+/-) mm  | 223.000 (+/-) /m <sup>2</sup> | 50 x 50 cm  |
| Nimbus           | 136  | tufted 1/10"       | 100% PA 6 - TRIFORMA™+        | GREENBASE modified bitumen | 650 (+/-) g/m <sup>2</sup>   | 4.300 (+/-) g/m <sup>2</sup> | 4,0 (+/-) mm | 7,0 (+/-) mm  | 191.000 (+/-) /m <sup>2</sup> | 50 x 50 cm  |
| Oak              | 140  | tufted 1/10"       | 100% PA 6 - Econyl®           | GREENBASE modified bitumen | 800 (+/-) g/m <sup>2</sup>   | 4.550 (+/-) g/m <sup>2</sup> | 5,0 (+/-) mm | 8,0 (+/-) mm  | 190.000 (+/-) /m <sup>2</sup> | 25 x 100 cm |
| President E      | 148  | tufted 1/10"       | 100% PA 6 heatset - Econyl®   | GREENBASE modified bitumen | 1.300 (+/-) g/m <sup>2</sup> | 4.800 (+/-) g/m <sup>2</sup> | 5,5 (+/-) mm | 8,0 (+/-) mm  | 189.000 (+/-) /m <sup>2</sup> | 50 x 50 cm  |

| Classification | Comfort rating | Dimensional stability | Fire resistance   | Thermal resistance        | Sound absorption    | Impact sound reduction                     | Light fastness | Rubbing fastness | Pattern repeat (W x H) |
|----------------|----------------|-----------------------|-------------------|---------------------------|---------------------|--|----------------|------------------|------------------------|
| 33             | LC 1           | ≤ 0,2%                | Bfl-S1 loose laid | 0,072 m <sup>2</sup> /K/W | 0,15 α <sub>w</sub> | 26 dB ΔL <sub>w</sub>   42 dB ΔL (1000 Hz) | ≥ 7            | ≥ 5              |                        |
| 32             | LC 5           | ≤ 0,2%                | Bfl-S1 loose laid | 0,122 m <sup>2</sup> /K/W | 0,20 α <sub>w</sub> | 25 dB ΔL <sub>w</sub>   42 dB ΔL (1000 Hz) | ≥ 7            | ≥ 5              |                        |
| 33             | LC 2           | ≤ 0,2%                | Bfl-S1 loose laid | 0,070 m <sup>2</sup> /K/W | 0,15 α <sub>w</sub> | 24 dB ΔL <sub>w</sub>   35 dB ΔL (1000 Hz) | 8              | 4-5              |                        |
| 33             | LC 2           | ≤ 0,2%                | Bfl-S1 loose laid | 0,064 m <sup>2</sup> /K/W | 0,15 α <sub>w</sub> | 24 dB ΔL <sub>w</sub>   35 dB ΔL (1000 Hz) | 8              | 4-5              |                        |
| 33             | LC 1           | ≤ 0,2%                | Bfl-S1 loose laid | 0,066 m <sup>2</sup> /K/W | 0,15 α <sub>w</sub> | 23 dB ΔL <sub>w</sub>   35 dB ΔL (1000 Hz) | ≥ 8            | ≥ 4-5            |                        |
| 33             | LC 1           | ≤ 0,2%                | Bfl-S1 loose laid | 0,064 m <sup>2</sup> /K/W | 0,15 α <sub>w</sub> | 21 dB ΔL <sub>w</sub>   33 dB ΔL (1000 Hz) | 8              | 4-5              |                        |
| 33             | LC 1           | ≤ 0,2%                | Bfl-S1 loose laid | 0,072 m <sup>2</sup> /K/W | 0,15 α <sub>w</sub> | 26 dB ΔL <sub>w</sub>   43 dB ΔL (1000 Hz) | 8              | 4-5              | 206 x 172 cm           |
| 33             | LC 1           | ≤ 0,2%                | Bfl-S1 loose laid | 0,072 m <sup>2</sup> /K/W | 0,15 α <sub>w</sub> | 26 dB ΔL <sub>w</sub>   42 dB ΔL (1000 Hz) | ≥ 7            | ≥ 5              | 203 x 167 cm           |
| 33             | LC 4           | ≤ 0,2%                | Bfl-S1 loose laid | 0,086 m <sup>2</sup> /K/W | 0,15 α <sub>w</sub> | 26 dB ΔL <sub>w</sub>   42 dB ΔL (1000 Hz) | ≥ 7            | ≥ 5              |                        |
| 33             | LC 2           | ≤ 0,2%                | Bfl-S1 loose laid | 0,100 m <sup>2</sup> /K/W | 0,20 α <sub>w</sub> | 27 dB ΔL <sub>w</sub>   39 dB ΔL (1000 Hz) | ≥ 7            | ≥ 5              | 405 x 250 cm           |
| 33             | LC 1           | ≤ 0,2%                | Bfl-S1 loose laid | 0,072 m <sup>2</sup> /K/W | 0,15 α <sub>w</sub> | 26 dB ΔL <sub>w</sub>   43 dB ΔL (1000 Hz) | 8              | 4-5              |                        |
| 33             | LC 1           | ≤ 0,2%                | Bfl-S1 loose laid | 0,066 m <sup>2</sup> /K/W | 0,15 α <sub>w</sub> | 25 dB ΔL <sub>w</sub>   42 dB ΔL (1000 Hz) | ≥ 6            | 4-5              | 249 x 278 cm           |
| 33             | LC 1           | ≤ 0,2%                | Bfl-S1 loose laid | 0,066 m <sup>2</sup> /K/W | 0,15 α <sub>w</sub> | 25 dB ΔL <sub>w</sub>   42 dB ΔL (1000 Hz) | ≥ 6            | 4-5              | 203 x 111 cm           |
| 33             | LC 1           | ≤ 0,2%                | Bfl-S1 loose laid | 0,066 m <sup>2</sup> /K/W | 0,15 α <sub>w</sub> | 25 dB ΔL <sub>w</sub>   42 dB ΔL (1000 Hz) | ≥ 6            | 4-5              | 203 x 167 cm           |
| 33             | LC 2           | ≤ 0,2%                | Bfl-S1 loose laid | 0,068 m <sup>2</sup> /K/W | 0,20 α <sub>w</sub> | 28 dB ΔL <sub>w</sub>   47 dB ΔL (1000 Hz) | 8              | 4-5              |                        |
| 33             | LC 2           | ≤ 0,2%                | Bfl-S1 loose laid | 0,068 m <sup>2</sup> /K/W | 0,20 α <sub>w</sub> | 29 dB ΔL <sub>w</sub>   49 dB ΔL (1000 Hz) | ≥ 6            | ≥ 4-5            |                        |
| 33             | LC 1           | ≤ 0,2%                | Bfl-S1 loose laid | 0,072 m <sup>2</sup> /K/W | 0,15 α <sub>w</sub> | 26 dB ΔL <sub>w</sub>   43 dB ΔL (1000 Hz) | 8              | 4-5              |                        |
| 33             | LC 2           | ≤ 0,2%                | Bfl-S1 loose laid | 0,100 m <sup>2</sup> /K/W | 0,20 α <sub>w</sub> | 27 dB ΔL <sub>w</sub>   39 dB ΔL (1000 Hz) | ≥ 7            | ≥ 5              | 203 x 250 cm           |
| 33             | LC 4           | ≤ 0,2%                | Bfl-S1 loose laid | 0,073 m <sup>2</sup> /K/W | 0,25 α <sub>w</sub> | 29 dB ΔL <sub>w</sub>   50 dB ΔL (1000 Hz) | ≥ 7            | ≥ 5              |                        |

|                    |     |              |                        |                            |                              |                              |              |              |                               |            |
|--------------------|-----|--------------|------------------------|----------------------------|------------------------------|------------------------------|--------------|--------------|-------------------------------|------------|
| Refined            | 152 | tufted 1/10" | 100% PA 6              | GREENBASE modified bitumen | 600 (+/-) g/m <sup>2</sup>   | 4.300 (+/-) g/m <sup>2</sup> | 4,0 (+/-) mm | 7,0 (+/-) mm | 191.000 (+/-) /m <sup>2</sup> | 50 x 50 cm |
| Shoreline          | 156 | tufted 1/10" | 100% PA 6 - Econyl®    | GREENBASE modified bitumen | 650 (+/-) g/m <sup>2</sup>   | 4.400 (+/-) g/m <sup>2</sup> | 4,0 (+/-) mm | 7,0 (+/-) mm | 192.000 (+/-) /m <sup>2</sup> | 50 x 50 cm |
| Sienna             | 162 | tufted 1/10" | 100% PA 6 - TRIFORMA™+ | GREENBASE modified bitumen | 650 (+/-) g/m <sup>2</sup>   | 4.300 (+/-) g/m <sup>2</sup> | 4,0 (+/-) mm | 7,0 (+/-) mm | 191.000 (+/-) /m <sup>2</sup> | 50 x 50 cm |
| Signature Art      | 166 | tufted 1/10" | 100% PA - Econyl®      | GREENBASE modified bitumen | 780 (+/-) g/m <sup>2</sup>   | 4.400 (+/-) g/m <sup>2</sup> | 5,0 (+/-) mm | 6,5 (+/-) mm | 175.000 (+/-) /m <sup>2</sup> | 50 x 50 cm |
| Signature Origin   | 166 | tufted 1/10" | 100% PA - Econyl®      | GREENBASE modified bitumen | 900 (+/-) g/m <sup>2</sup>   | 4.400 (+/-) g/m <sup>2</sup> | 5,0 (+/-) mm | 6,5 (+/-) mm | 198.750 (+/-) /m <sup>2</sup> | 50 x 50 cm |
| Signature Prestige | 166 | tufted 1/10" | 100% PA - Econyl®      | GREENBASE modified bitumen | 1.200 (+/-) g/m <sup>2</sup> | 4.700 (+/-) g/m <sup>2</sup> | 6,0 (+/-) mm | 8,5 (+/-) mm | 213.000 (+/-) /m <sup>2</sup> | 50 x 50 cm |
| Urban Textures     | 182 | tufted 1/10" | 100% PA 6 - Econyl®    | GREENBASE modified bitumen | 600 (+/-) g/m <sup>2</sup>   | 4.300 (+/-) g/m <sup>2</sup> | 3,5 (+/-) mm | 6,5 (+/-) mm | 192.000 (+/-) /m <sup>2</sup> | 50 x 50 cm |
| Vintage            | 188 | tufted 1/10" | 100% PA - Econyl®      | GREENBASE modified bitumen | 900 (+/-) g/m <sup>2</sup>   | 4.500 (+/-) g/m <sup>2</sup> | 5,0 (+/-) mm | 7,0 (+/-) mm | 191.000 (+/-) /m <sup>2</sup> | 50 x 50 cm |

|    |      |        |                   |                           |                     |  |       |       |  |
|----|------|--------|-------------------|---------------------------|---------------------|--|-------|-------|--|
| 33 | LC 1 | ≤ 0,2% | Bfl-S1 loose laid | 0,066 m <sup>2</sup> /K/W | 0,15 α <sub>w</sub> | 25 dB ΔL <sub>w</sub>   42 dB ΔL (1000 Hz) | ≥ 6   | 4-5   |  |
| 33 | LC 1 | ≤ 0,2% | Bfl-S1 loose laid | 0,072 m <sup>2</sup> /K/W | 0,15 α <sub>w</sub> | 26 dB ΔL <sub>w</sub>   42 dB ΔL (1000 Hz) | ≥ 7   | ≥ 5   | 249 x 278 cm                                       |
| 33 | LC 1 | ≤ 0,2% | Bfl-S1 loose laid | 0,072 m <sup>2</sup> /K/W | 0,15 α <sub>w</sub> | 26 dB ΔL <sub>w</sub>   43 dB ΔL (1000 Hz) | 8     | 4-5   |  |
| 33 | LC 2 | ≤ 0,2% | Bfl-S1 loose laid | 0,068 m <sup>2</sup> /K/W | 0,15 α <sub>w</sub> | 26 dB ΔL <sub>w</sub>   42 dB ΔL (1000 Hz) | ≥ 5-6 | ≥ 3-4 |  |
| 33 | LC 3 |        | Bfl-S1 loose laid |                           |                     |  | 7     |       |  |
| 33 | LC 3 |        | Bfl-S1 loose laid |                           |                     |  | 7     |       |  |
| 33 | LC 1 | ≤ 0,2% | Bfl-S1 loose laid | 0,072 m <sup>2</sup> /K/W | 0,15 α <sub>w</sub> | 26 dB ΔL <sub>w</sub>   42 dB ΔL (1000 Hz) | ≥ 7   | ≥ 5   | 244 x 200 cm                                       |
| 33 | LC 2 | ≤ 0,2% | Bfl-S1 loose laid | 0,068 m <sup>2</sup> /K/W | 0,15 α <sub>w</sub> | 26 dB ΔL <sub>w</sub>   42 dB ΔL (1000 Hz) | ≥ 5-6 | ≥ 3-4 | Felina: 98,5 x 142,5 cm<br>Firenze: 98,5 x 98,5 cm |

### Technical details wall-to-wall

| Collection    | Page | Manufacturing type | Pile composition              | Secondary backing | Pile weight                  | Total weight                 | Pile height  | Total height  | Tuft density                  | Size       |
|---------------|------|--------------------|-------------------------------|-------------------|------------------------------|------------------------------|--------------|---------------|-------------------------------|------------|
| Almyra        | 30   | tufted 1/10"       | 100% PA - Econyl®             | action backing    | 1.200 (+/-) g/m <sup>2</sup> | 2.100 (+/-) g/m <sup>2</sup> | 6,5 (+/-) mm | 8,0 (+/-) mm  | 210.000 (+/-) /m <sup>2</sup> | 400-500 cm |
| Artisan Tweed | 36   | tufted 1/10"       | 100% PA 6 - Econyl®           | action backing    | 650 (+/-) g/m <sup>2</sup>   | 1.950 (+/-) g/m <sup>2</sup> | 4,0 (+/-) mm | 6,0 (+/-) mm  | 192.000 (+/-) /m <sup>2</sup> | 400 cm     |
| Aztec Weave   | 42   | tufted 1/10"       | 100% PA 6 (nylon)             | action backing    | 600 (+/-) g/m <sup>2</sup>   | 1.885 (+/-) g/m <sup>2</sup> | 4,0 (+/-) mm | 7,0 (+/-) mm  | 173.000 (+/-) /m <sup>2</sup> | 400 cm     |
| Belflor SDN   | 46   | tufted 1/8"        | 100% PA 6                     | action backing    | 810 (+/-) g/m <sup>2</sup>   | 1.900 (+/-) g/m <sup>2</sup> | 5,5 (+/-) mm | 6,5 (+/-) mm  | 123.500 (+/-) /m <sup>2</sup> | 400 cm     |
| Belina        | 50   | tufted 1/8"        | 100% PA 6 - Econyl®           | action backing    | 1.250 (+/-) g/m <sup>2</sup> | 2.300 (+/-) g/m <sup>2</sup> | 9,0 (+/-) mm | 9,5 (+/-) mm  | 144.000 (+/-) /m <sup>2</sup> | 400 cm     |
| Cameo         | 54   | tufted 1/10"       | 100% PA 6 (nylon)             | action backing    | 600 (+/-) g/m <sup>2</sup>   | 2.000 (+/-) g/m <sup>2</sup> | 3,5 (+/-) mm | 6,5 (+/-) mm  | 190.000 (+/-) /m <sup>2</sup> | 400 cm     |
| Cobalt SDN    | 62   | tufted 1/10"       | 100% PA 6                     | action backing    | 550 (+/-) g/m <sup>2</sup>   | 1.825 (+/-) g/m <sup>2</sup> | 3,0 (+/-) mm | 5,5 (+/-) mm  | 164.000 (+/-) /m <sup>2</sup> | 400 cm     |
| Coral (lines) | 68   | tufted 1/10"       | 100% PA 6 BCF                 | action backing    | 485 (+/-) g/m <sup>2</sup>   | 1.600 (+/-) g/m <sup>2</sup> | 3,0 (+/-) mm | 5,0 (+/-) mm  | 175.000 (+/-) /m <sup>2</sup> | 400 cm     |
| Crossline     | 76   | tufted 1/10"       | 100% PA 6                     | action backing    | 650 (+/-) g/m <sup>2</sup>   | 1.950 (+/-) g/m <sup>2</sup> | 4,0 (+/-) mm | 6,5 (+/-) mm  | 191.000 (+/-) /m <sup>2</sup> | 400 cm     |
| Diamond Art   | 80   | tufted 1/10"       | 100% PA 6 - Econyl®           | action backing    | 650 (+/-) g/m <sup>2</sup>   | 1.950 (+/-) g/m <sup>2</sup> | 4,0 (+/-) mm | 6,0 (+/-) mm  | 192.000 (+/-) /m <sup>2</sup> | 400 cm     |
| Diplomat      | 86   | tufted 1/8"        | 100% PA 6 - heatset           | action backing    | 1.150 (+/-) g/m <sup>2</sup> | 2.250 (+/-) g/m <sup>2</sup> | 5,5 (+/-) mm | 7,5 (+/-) mm  | 148.000 (+/-) /m <sup>2</sup> | 400 cm     |
| Earth         | 90   | tufted 1/10"       | 100% PA 6 - Econyl®           | action backing    | 800 (+/-) g/m <sup>2</sup>   | 2.000 (+/-) g/m <sup>2</sup> | 5,0 (+/-) mm | 7,5 (+/-) mm  | 190.000 (+/-) /m <sup>2</sup> | 400 cm     |
| Elemental     | 94   | tufted 1/10"       | 100% PA 6 - TRIFORMA™+        | action backing    | 650 (+/-) g/m <sup>2</sup>   | 1.875 (+/-) g/m <sup>2</sup> | 4,0 (+/-) mm | 5,7 (+/-) mm  | 175.000 (+/-) /m <sup>2</sup> | 400 cm     |
| Expression    | 98   | tufted 1/10"       | 100% PA 6                     | action backing    | 650 (+/-) g/m <sup>2</sup>   | 1.950 (+/-) g/m <sup>2</sup> | 4,0 (+/-) mm | 6,5 (+/-) mm  | 191.000 (+/-) /m <sup>2</sup> | 400 cm     |
| Grunge        | 104  | tufted 1/10"       | 100% PA 6                     | action backing    | 650 (+/-) g/m <sup>2</sup>   | 1.950 (+/-) g/m <sup>2</sup> | 4,0 (+/-) mm | 6,5 (+/-) mm  | 191.000 (+/-) /m <sup>2</sup> | 400 cm     |
| Hexagon Art   | 108  | tufted 1/10"       | 100% PA 6                     | action backing    | 650 (+/-) g/m <sup>2</sup>   | 1.950 (+/-) g/m <sup>2</sup> | 4,0 (+/-) mm | 6,5 (+/-) mm  | 191.000 (+/-) /m <sup>2</sup> | 400 cm     |
| Lisbon SDN    | 114  | tufted 1/10"       | 100% PA 6                     | action backing    | 700 (+/-) g/m <sup>2</sup>   | 1.850 (+/-) g/m <sup>2</sup> | 4,5 (+/-) mm | 6,5 (+/-) mm  | 198.750 (+/-) /m <sup>2</sup> | 400 cm     |
| Matera        | 118  | tufted 1/8"        | 100% PA 6 - Econyl® - heatset | action backing    | 1.600 (+/-) g/m <sup>2</sup> | 2.400 (+/-) g/m <sup>2</sup> | 8,0 (+/-) mm | 10,0 (+/-) mm | 147.200 (+/-) /m <sup>2</sup> | 400 cm     |
| Matera Primo  | 122  | tufted 1/8"        | 100% PA 6 - Econyl® - heatset | action backing    | 2.000 (+/-) g/m <sup>2</sup> | 2.800 (+/-) g/m <sup>2</sup> | 9,0 (+/-) mm | 11,0 (+/-) mm | 172.800 (+/-) /m <sup>2</sup> | 400 cm     |

| Classification | Comfort rating | Fire resistance | Thermal resistance        | Sound absorption     | Impact sound reduction                     | Light fastness | Rubbing fastness | Pattern repeat (W x H) |
|----------------|----------------|-----------------|---------------------------|----------------------|--|----------------|------------------|------------------------|
| 33             | LC 4           | Cfl-S1          | 0,091 m <sup>2</sup> /K/W | 0,20 α <sub>w</sub>  | 28 dB ΔL <sub>w</sub>   45 dB ΔL (1000 Hz) | 7-8            | ≥ 5              |                        |
| 33             | LC 1           | Bfl-S1          | 0,078 m <sup>2</sup> /K/W | 0,15 α <sub>w</sub>  | 25 dB ΔL <sub>w</sub>                      | ≥ 7            | ≥ 5              |                        |
| 33             | LC 1           | Bfl-S1          | 0,078 m <sup>2</sup> /K/W | 0,20 α <sub>w</sub>  | 25 dB ΔL <sub>w</sub>   43 dB ΔL (1000 Hz) | 8              | 4-5              |                        |
| 32             | LC 3           | Cfl-S1          | 0,100 m <sup>2</sup> /K/W | 0,20 α <sub>w</sub>  | 22 dB ΔL <sub>w</sub>   32 dB ΔL (1000 Hz) | ≥ 7            | ≥ 5              |                        |
| 32             | LC 5           | Cfl-S1          | 0,120 m <sup>2</sup> /K/W | 0,25 α <sub>w</sub>  | 26 dB ΔL <sub>w</sub>   46 dB ΔL (1000 Hz) | ≥ 7            | ≥ 5              |                        |
| 33             | LC 1           | Bfl-S1          | 0,078 m <sup>2</sup> /K/W | 0,20 α <sub>w</sub>  | 25 dB ΔL <sub>w</sub>   43 dB ΔL (1000 Hz) | 8              | 4-5              |                        |
| 33             | LC 1           | Bfl-S1          | 0,073 m <sup>2</sup> /K/W | 0,15 α <sub>w</sub>  | 25 dB ΔL <sub>w</sub>   42 dB ΔL (1000 Hz) | 8              | 4-5              |                        |
| 33             | LC 1           | Cfl-S1          | 0,065 m <sup>2</sup> /K/W |                      | 20 dB ΔL <sub>w</sub>                      | ≥ 8            | ≥ 4-5            |                        |
| 33             | LC 1           | Bfl-S1          | 0,086 m <sup>2</sup> /K/W | 0,20 α <sub>w</sub>  | 25 dB ΔL <sub>w</sub>   44 dB ΔL (1000 Hz) | 8              | 4-5              | 206 x 172 cm           |
| 33             | LC 1           | Bfl-S1          | 0,078 m <sup>2</sup> /K/W | 0,15 α <sub>w</sub>  | 25 dB ΔL <sub>w</sub>                      | ≥ 7            | ≥ 5              | 203 x 167 cm           |
| 33             | LC 4           | Bfl-S1          | 0,092 m <sup>2</sup> /K/W | 0,25 α <sub>w</sub>  | 26 dB ΔL <sub>w</sub>   45 dB ΔL (1000 Hz) | ≥ 7            | ≥ 5              |                        |
| 32             | LC 2           | Cfl-S1          | 0,119 m <sup>2</sup> /K/W |                      | 24 dB ΔL <sub>w</sub>                      | ≥ 7            | ≥ 5              | 405 x 250 cm           |
| 32             | LC 1           | Bfl-S1          | 0,086 m <sup>2</sup> /K/W | 0,20 α <sub>wa</sub> | 25 dB ΔL <sub>w</sub>   44 dB ΔL (1000 Hz) | 8              | 4-5              |                        |
| 33             | LC 1           | Bfl-S1          | 0,086 m <sup>2</sup> /K/W | 0,20 α <sub>w</sub>  | 25 dB ΔL <sub>w</sub>   44 dB ΔL (1000 Hz) | 8              | 4-5              | 249 x 278 cm           |
| 33             | LC 1           | Bfl-S1          | 0,086 m <sup>2</sup> /K/W | 0,20 α <sub>wa</sub> | 25 dB ΔL <sub>w</sub>   44 dB ΔL (1000 Hz) | 8              | 4-5              | 203 x 111 cm           |
| 33             | LC 1           | Bfl-S1          | 0,086 m <sup>2</sup> /K/W | 0,20 α <sub>wa</sub> | 25 dB ΔL <sub>w</sub>   44 dB ΔL (1000 Hz) | 8              | 4-5              | 203 x 167 cm           |
| 33             | LC 2           | Bfl-S1          | 0,076 m <sup>2</sup> /K/W | 0,20 α <sub>w</sub>  | 28 dB ΔL <sub>w</sub>   50 dB ΔL (1000 Hz) | 8              | 4-5              |                        |
| 33             | LC 5           | Cfl-S1          | 0,125 m <sup>2</sup> /K/W | 0,20 α <sub>w</sub>  | 28 dB ΔL <sub>w</sub>   47 dB ΔL (1000 Hz) | ≥ 7            | ≥ 5              |                        |
| 33             | LC 5           | Cfl-S1          | 0,135 m <sup>2</sup> /K/W | 0,25 α <sub>w</sub>  | 31 dB ΔL <sub>w</sub>   51 dB ΔL (1000 Hz) | ≥ 7            | ≥ 5              |                        |

|                    |     |              |                                  |                |                              |                              |               |               |                               |            |
|--------------------|-----|--------------|----------------------------------|----------------|------------------------------|------------------------------|---------------|---------------|-------------------------------|------------|
| Medina             | 128 | tufted 1/10" | 100% PA 6 - Econyl®              | action backing | 1.950 (+/-) g/m <sup>2</sup> | 2.800 (+/-) g/m <sup>2</sup> | 11,5 (+/-) mm | 13,0 (+/-) mm | 240.000 (+/-) /m <sup>2</sup> | 400 cm     |
| Milano II          | 132 | tufted 1/10" | 100% PA 6 BCF                    | action backing | 800 (+/-) g/m <sup>2</sup>   | 2.050 (+/-) g/m <sup>2</sup> | 4,5 (+/-) mm  | 6,5 (+/-) mm  | 223.000 (+/-) /m <sup>2</sup> | 400 cm     |
| Nimbus             | 136 | tufted 1/10" | 100% PA 6 - TRIFORMA™+           | action backing | 650 (+/-) g/m <sup>2</sup>   | 1.950 (+/-) g/m <sup>2</sup> | 4,0 (+/-) mm  | 6,5 (+/-) mm  | 191.000 (+/-) /m <sup>2</sup> | 400 cm     |
| Opal               | 144 | tufted 5/16" | 100% PA                          | action backing | 800 (+/-) g/m <sup>2</sup>   | 1.600 (+/-) g/m <sup>2</sup> | 20,0 (+/-) mm | 22,0 (+/-) mm | 55.000 (+/-) /m <sup>2</sup>  | 400 cm     |
| President E        | 148 | tufted 1/10" | 100% PA 6 - Econyl®<br>- heatset | action backing | 1.300 (+/-) g/m <sup>2</sup> | 2.400 (+/-) g/m <sup>2</sup> | 5,5 (+/-) mm  | 7,0 (+/-) mm  | 189.000 (+/-) /m <sup>2</sup> | 400 cm     |
| Relined            | 152 | tufted 1/10" | 100% PA                          | action backing | 600 (+/-) g/m <sup>2</sup>   | 1.900 (+/-) g/m <sup>2</sup> | 4,0 (+/-) mm  | 6,5 (+/-) mm  | 191.000 (+/-) /m <sup>2</sup> | 400 cm     |
| Shoreline          | 156 | tufted 1/10" | 100% PA 6 - Econyl®              | action backing | 650 (+/-) g/m <sup>2</sup>   | 1.950 (+/-) g/m <sup>2</sup> | 4,0 (+/-) mm  | 6,0 (+/-) mm  | 192.000 (+/-) /m <sup>2</sup> | 400 cm     |
| Sienna             | 162 | tufted 1/10" | 100% PA 6 - TRIFORMA™+           | action backing | 650 (+/-) g/m <sup>2</sup>   | 1.950 (+/-) g/m <sup>2</sup> | 4,0 (+/-) mm  | 6,5 (+/-) mm  | 191.000 (+/-) /m <sup>2</sup> | 400 cm     |
| Signature Art      | 166 | tufted 1/10" | 100% PA - Econyl®                | action backing | 780 (+/-) g/m <sup>2</sup>   | 2.050 (+/-) g/m <sup>2</sup> | 5,0 (+/-) mm  | 6,2 (+/-) mm  | 175.000 (+/-) /m <sup>2</sup> | 400 cm     |
| Signature Origin   | 166 | tufted 1/10" | 100% PA - Econyl®                | action backing | 900 (+/-) g/m <sup>2</sup>   | 2.000 (+/-) g/m <sup>2</sup> | 5,0 (+/-) mm  | 6,0 (+/-) mm  | 198.750 (+/-) /m <sup>2</sup> | 400 cm     |
| Signature Prestige | 166 | tufted 1/10" | 100% PA - Econyl®                | action backing | 1.200 (+/-) g/m <sup>2</sup> | 2.300 (+/-) g/m <sup>2</sup> | 6,0 (+/-) mm  | 8,0 (+/-) mm  | 213.000 (+/-) /m <sup>2</sup> | 400 cm     |
| Soneva             | 176 | tufted 1/10" | 100% PA - Econyl®                | action backing | 1.600 (+/-) g/m <sup>2</sup> | 2.400 (+/-) g/m <sup>2</sup> | 8,5 (+/-) mm  | 10,0 (+/-) mm | 220.000 (+/-) /m <sup>2</sup> | 400-500 cm |
| Urban Textures     | 182 | tufted 1/10" | 100% PA 6 - Econyl®              | action backing | 600 (+/-) g/m <sup>2</sup>   | 1.900 (+/-) g/m <sup>2</sup> | 4,0 (+/-) mm  | 6,0 (+/-) mm  | 192.000 (+/-) /m <sup>2</sup> | 400 cm     |
| Vintage            | 188 | tufted 1/10" | 100% PA - Econyl®                | action backing | 900 (+/-) g/m <sup>2</sup>   | 1.950 (+/-) g/m <sup>2</sup> | 5,0 (+/-) mm  | 6,5 (+/-) mm  | 191.000 (+/-) /m <sup>2</sup> | 400 cm     |

|     |      |        |                           |                     |  |       |       |  |
|-----|------|--------|---------------------------|---------------------|--|-------|-------|--|
| 33  | LC 5 | Cfl-S1 | 0,114 m <sup>2</sup> /K/W | 0,20 α <sub>w</sub> | 28 dB ΔL <sub>w</sub>   45 dB ΔL (1000 Hz) | 7-8   | ≥ 5   |  |
| 33  | LC 2 | Bfl-S1 | 0,071 m <sup>2</sup> /K/W | 0,20 α <sub>w</sub> | 26 dB ΔL <sub>w</sub>   45 dB ΔL (1000 Hz) | ≥ 6   | ≥ 4-5 |  |
| 32  | LC 1 | Bfl-S1 | 0,086 m <sup>2</sup> /K/W | 0,20 α <sub>w</sub> | 25 dB ΔL <sub>w</sub>   44 dB ΔL (1000 Hz) | 8     | 4-5   |  |
| 22+ | LC 3 | Cfl-S1 |                           |                     | 25 dB ΔL <sub>w</sub>                      | ≥ 7   | ≥ 4-5 |  |
| 33  | LC 4 | Bfl-S1 | 0,083 m <sup>2</sup> /K/W | 0,25 α <sub>w</sub> | 26 dB ΔL <sub>w</sub>   45 dB ΔL (1000 Hz) | ≥ 7   | ≥ 5   |  |
| 33  | LC 1 | Bfl-S1 | 0,086 m <sup>2</sup> /K/W | 0,20 α <sub>w</sub> | 25 dB ΔL <sub>w</sub>   44 dB ΔL (1000 Hz) | 8     | 4-5   |  |
| 33  | LC 1 | Bfl-S1 | 0,078 m <sup>2</sup> /K/W | 0,15 α <sub>w</sub> | 25 dB ΔL <sub>w</sub>                      | ≥ 7   | ≥ 5   | 249 x 278 cm                                       |
| 32  | LC 1 | Bfl-S1 | 0,086 m <sup>2</sup> /K/W | 0,20 α <sub>w</sub> | 25 dB ΔL <sub>w</sub>   44 dB ΔL (1000 Hz) | 8     | 4-5   |  |
| 33  | LC 2 | Cfl-S1 |                           |                     | 23 dB ΔL <sub>w</sub>                      | ≥ 5-6 | ≥ 3-4 |  |
| 33  | LC 3 | Cfl-S1 |                           |                     |  | 7     |       |  |
| 33  | LC 5 | Cfl-S1 |                           |                     |  | 7     |       |  |
| 33  | LC 5 | Cfl-S1 | 0,114 m <sup>2</sup> /K/W | 0,25 α <sub>w</sub> | 30 dB ΔL <sub>w</sub>   46 dB ΔL (1000 Hz) | 7-8   | ≥ 5   |  |
| 33  | LC 1 | Bfl-S1 | 0,078 m <sup>2</sup> /K/W | 0,15 α <sub>w</sub> | 25 dB ΔL <sub>w</sub>                      | ≥ 7   | ≥ 5   | 244 x 200 cm                                       |
| 33  | LC 2 | Cfl-S1 |                           |                     | 23 dB ΔL <sub>w</sub>                      | ≥ 5-6 | ≥ 3-4 | Felina: 98,5 x 142,5 cm<br>Firenze: 98,5 x 98,5 cm |

## Technical details rugs

| Collection         | Page | Manufacturing type | Construction              | Pile composition              | Dye method      | Primary backing | Secondary backing          |
|--------------------|------|--------------------|---------------------------|-------------------------------|-----------------|-----------------|----------------------------|
| Almyra             | 30   | tufted 1/10"       | 2-ply cut pile            | 100% PA 6 - Econyl®           | solution dyed   | woven           | 100% recycled PES antislip |
| Belina             | 50   | tufted 1/8"        | 2-ply cut pile            | 100% PA 6 - Econyl®           | solution dyed   | woven           | 100% recycled PES antislip |
| Matera Primo       | 122  | tufted 1/8"        | cut pile (frisé)          | 100% PA 6 - Econyl® - heatset | solution dyed   | woven           | 100% recycled PES antislip |
| Medina             | 128  | tufted 1/10"       | 2-ply cut pile rib velvet | 100% PA 6 - Econyl®           | solution dyed   | woven           | 100% recycled PES antislip |
| Signature Art      | 166  | tufted 1/10"       | structured loop pile      | 100% PA - Econyl®             | chromojet print | woven           | 100% recycled PES antislip |
| Signature Origin   | 166  | tufted 1/10"       | cut pile - saxony         | 100% PA - Econyl®             | chromojet print | woven           | 100% recycled PES antislip |
| Signature Prestige | 166  | tufted 1/10"       | cut pile - saxony         | 100% PA - Econyl®             | chromojet print | woven           | 100% recycled PES antislip |
| Soneva             | 176  | tufted 1/10"       | 2-ply cut pile (frisé)    | 100% PA 6 - Econyl®           | solution dyed   | woven           | 100% recycled PES antislip |

| Pile weight                  | Pile height   | Tuft density                  | Classification | Comfort rating | Fire resistance | Light fastness | Rubbing fastness |
|------------------------------|---------------|-------------------------------|----------------|----------------|-----------------|----------------|------------------|
| 1.200 (+/-) g/m <sup>2</sup> | 6,5 (+/-) mm  | 210.000 (+/-) /m <sup>2</sup> | 33             | LC 4           | Cfl-S1          | 7-8            | ≥ 5              |
| 1.250 (+/-) g/m <sup>2</sup> | 9,5 (+/-) mm  | 146.000 (+/-) /m <sup>2</sup> | 32             | LC 5           | Cfl-S1          | ≥ 7            | ≥ 5              |
| 2.000 (+/-) g/m <sup>2</sup> | 9,0 (+/-) mm  | 172.800 (+/-) /m <sup>2</sup> | 33             | LC 5           | Cfl-S1          | ≥ 7            | ≥ 5              |
| 1.950 (+/-) g/m <sup>2</sup> | 11,5 (+/-) mm | 240.000 (+/-) /m <sup>2</sup> | 33             | LC 5           | Cfl-S1          | 7-8            | ≥ 5              |
| 2.050 (+/-) g/m <sup>2</sup> | 5,0 (+/-) mm  | 175.000 (+/-) /m <sup>2</sup> | 33             | LC 2           | Cfl-S1          | ≥ 5-6          | ≥ 3-4            |
| 900 (+/-) g/m <sup>2</sup>   | 5,0 (+/-) mm  | 198.750 (+/-) /m <sup>2</sup> | 33             | LC 3           | Cfl-S1          | 7              |                  |
| 1.200 (+/-) g/m <sup>2</sup> | 6,0 (+/-) mm  | 213.000 (+/-) /m <sup>2</sup> | 33             | LC 5           | Cfl-S1          | 7              |                  |
| 1.600 (+/-) g/m <sup>2</sup> | 8,5 (+/-) mm  | 220.000 (+/-) /m <sup>2</sup> | 33             | LC 5           | Cfl-S1          | 7-8            | ≥ 5              |



[www.tapibel.be](http://www.tapibel.be) - [sales@tapibel.be](mailto:sales@tapibel.be)

Industrielaan 4 - Nolimpark 1319

B-3900 Pelt - Belgium

Tel : +32 11 80 48 50

