



Virtuo

Design tiles and planks

Connected to your life aspirations

Gerflor[®]

Table of contents

- 05. **Virtuo, the reference in sustainability**
- 05. **Why choosing Virtuo is an eco-responsible choice?**
- 06. **Planks Collection**
- 12. **Tiles Collection**
- 14. **New Virtuo Connected to different life aspirations**
 - 16. Japandi style
 - 18. Transparency
 - 20. Terra Luna
 - 22. Classic Clash
 - 24. Timeless Designs
- 26. **Connected to your life aspirations**
- 28. **Product construction**
- 29. **Accessories**
- 30. **Technical Characteristics**



Exclusive by Gerflor

2 Technologies
2 Products

All in 1



Virtuo 55 Rigid Acoustic Virtuo 30 Rigid Acoustic

- Choose the best decor according to your life aspirations
- Integrated acoustic backing : ideal product solution for heavy renovation
- 30% lighter than standard rigid with still the best performances
- Acoustic insulation 21 dB



Installation video



Virtuo 55 Virtuo 30

- Wood, mineral, stone... choose your way of living
- Mix & Match possibilities
- Ideal product solution for new build



Installation video



Think about Gerflor
Smart Fix 16 dB



Virtuo, the reference in sustainability



Carbon footprint

- Manufacturing Footprint in Europe
- ISO14001 & 50001 certifications
- Renewable energy



100% recyclable

- Up to 35% of recycled content
- Adhesive Free solutions
- Packaging using 100% recycled cardboard



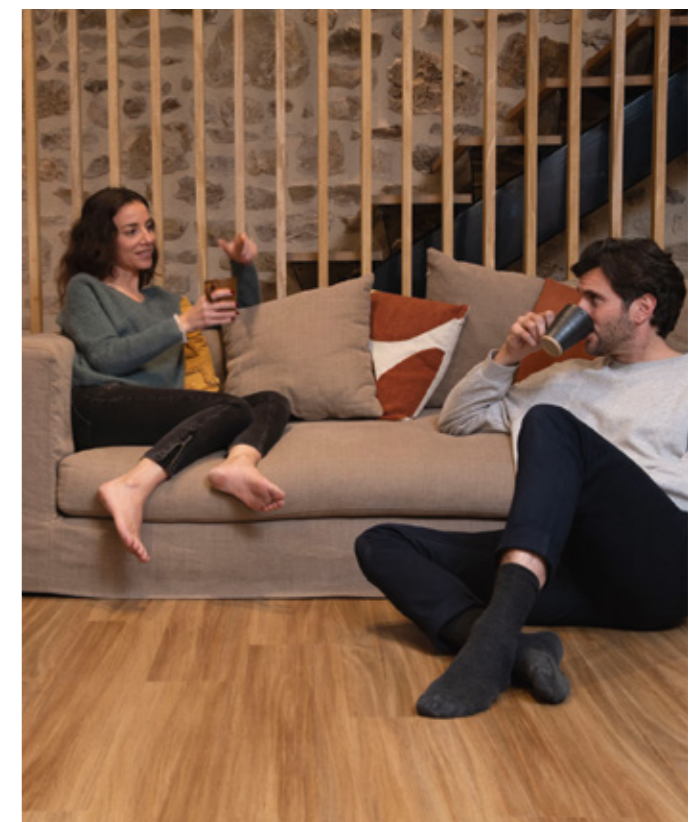
we **care** / we **act**



Third-party verified life cycle analysis of our products can be found in their Environmental Product Declaration (EPD)

Why choosing Virtuo is an eco-responsible choice?

- You select a lighter floor covering (meaning that fewer raw materials are used) and a solution containing up to 35% recycled materials.
- Our floors are designed to last for up to 25 years. The longer you keep your floor, the more you will reduce your impact on the environment.
- You select an easy-to-clean floor : Cleaning (water, detergent and electricity for vacuuming) represents 10 to 20% of a floor covering's total carbon footprint when considering all the steps in its lifecycle, from cradle to grave.
- The best choice for healthy room air: Virtuo floors are almost emission-free, free of formaldehyde, heavy metals, solvents and endocrine disruptors.



Planks Collection

Herringbone



Sunny Nature 0997
HB 55 RIGID AC 125 x 750
HB 55 DB 152 x 762



Blomma Beige 1460
HB 55 RIGID AC 125 x 750
HB 55 DB 152 x 762



Blomma Cream 1463
HB 55 RIGID AC 125 x 750
HB 55 DB 152 x 762



Blomma Natural 1465
HB 55 RIGID AC 125 x 750
HB 55 DB 152 x 762



Blomma Light 1464
HB 55 RIGID AC 125 x 750
HB 55 DB 152 x 762



Planks Collection

Blomma - EIR 
Ultra-realistic surface
embossing



Blomma Cream 1463
RIGID AC 55 & 30 229 x 1492
DB 55 & 30 230 x 1500



Blomma Clear 1462
RIGID AC 55 & 30 229 x 1492
DB 55 & 30 230 x 1500



Blomma Light 1464
RIGID AC 55 & 30 229 x 1492
DB 55 & 30 230 x 1500



Blomma Natural 1465
RIGID AC 55 & 30 229 x 1492
DB 55 & 30 230 x 1500




Blomma Beige 1460
RIGID AC 55 & 30 229 x 1492
DB 55 & 30 230 x 1500



Blomma Brown 1461
RIGID AC 55 & 30 229 x 1492
DB 55 & 30 230 x 1500



Bohem Light Grey

Bohem - EIR 
Ultra-realistic surface
embossing



Bohem Light Grey 1459
RIGID AC 55 & 30 229 x 1250
DB 55 & 30 184 x 1219



Bohem Honey 1458
RIGID AC 55 & 30 229 x 1250
DB 55 & 30 184 x 1219



Bohem Dark Grey 1457
RIGID AC 55 & 30 229 x 1250
DB 55 & 30 184 x 1219



Bohem Beige 1456
RIGID AC 55 & 30 229 x 1250
DB 55 & 30 184 x 1219

Planks Collection

Sunny



Sunny Snow 1477
RIGID AC 55 & 30 229 × 1250
DB 55 & 30 184 × 1219



Sunny Light 0996
RIGID AC 55 & 30 229 × 1250
DB 55 & 30 184 × 1219



Sunny Nature 0997
RIGID AC 55 & 30 229 × 1250
DB 55 & 30 184 × 1219

Daintree



Daintree Honey 1455
RIGID AC 55 & 30 229 × 1492
DB 55 & 30 230 × 1500



Daintree Natural 1454
RIGID AC 55 & 30 229 × 1492
DB 55 & 30 230 × 1500



Daintree Brown 1010
RIGID AC 55 & 30 229 × 1492
DB 55 & 30 230 × 1500

Baita



Baita Blond 1023
RIGID AC 55 & 30 229 × 1492
DB 55 & 30 230 × 1500



Baita Medium 1025
RIGID AC 55 & 30 229 × 1492
DB 55 & 30 230 × 1500



Baita Taupe 1026
RIGID AC 55 & 30 229 × 1492

Qaja



Qaja Honey 1474
RIGID AC 55 & 30 229 × 1250
DB 55 & 30 184 × 1219



Qaja Beige 1473
RIGID AC 55 & 30 229 × 1250
DB 55 & 30 184 × 1219

Sakia



Sakia 1118
RIGID AC 55 & 30 229 × 1250
DB 55 & 30 184 × 1219

Mikado



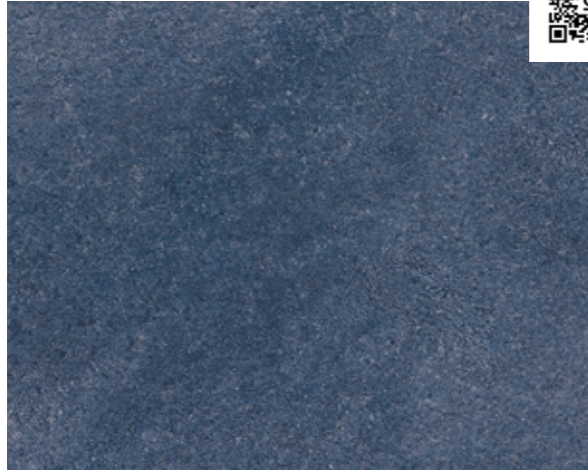
Mikado 1100
RIGID AC 55 & 30 229 × 1250
DB 55 & 30 184 × 1219



Mikado

Tiles Collection

Acuarela



Acuarela Ink 1475
RIGID AC 55 & 30 399 x 730
DB 55 496 x 996 **DB 30** 457 x 914

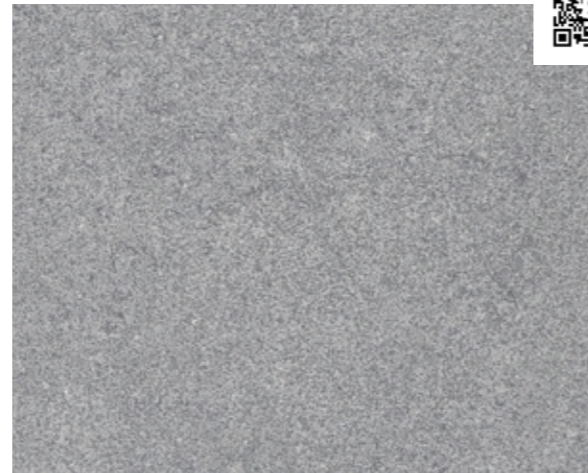


Acuarela Taupe 1476
RIGID AC 55 & 30 399 x 730
DB 55 496 x 996 **DB 30** 457 x 914

Latina



Latina Dark 0992
RIGID AC 55 & 30 399 x 730
DB 55 & 30 610 x 610



Latina Pearl 0994
RIGID AC 55 & 30 399 x 730
DB 55 & 30 610 x 610



Latina Clear 0990
RIGID AC 55 & 30 399 x 730
DB 55 & 30 610 x 610

Tavla



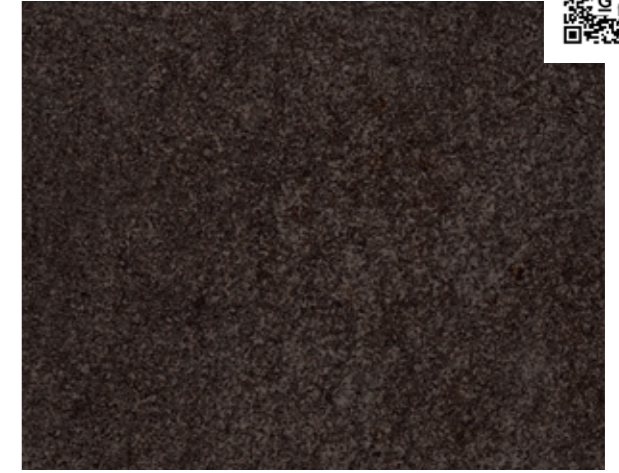
Tavla Beige 1451
RIGID AC 55 & 30 399 x 730
DB 55 & 30 610 x 610



Tavla Clear 1450
RIGID AC 55 & 30 399 x 730
DB 55 & 30 610 x 610



Tavla Green 1452
RIGID AC 55 & 30 399 x 730
DB 55 & 30 610 x 610



Tavla Dark 1453
RIGID AC 55 & 30 399 x 730
DB 55 & 30 610 x 610



Tavla Beige



New Virtuo Connected to different life aspirations



32 DESIGNS
Designs
 Available as Rigid Acoustic with clic-system and as Dry Back for glue down installation

 **Low VOC emissions**
 Indoor air quality : TVOC <10 µg/m³



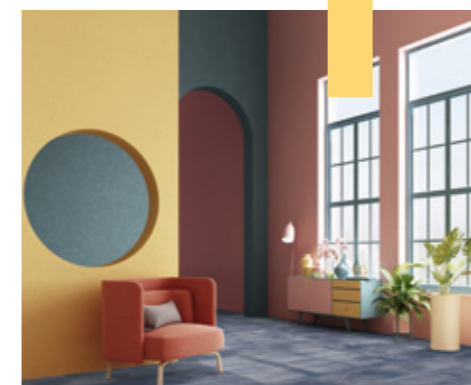
 **Complete solution**
 Underlayers, matching skirtings and coverstrips

5 trends in line with new decors, 2 installation methods according to your uses.



Japandi
 Natural Materials bring Purity

Transparency
 The moving light



Terra Luna
 Roundness & wild



The essentials
 Timeless designs

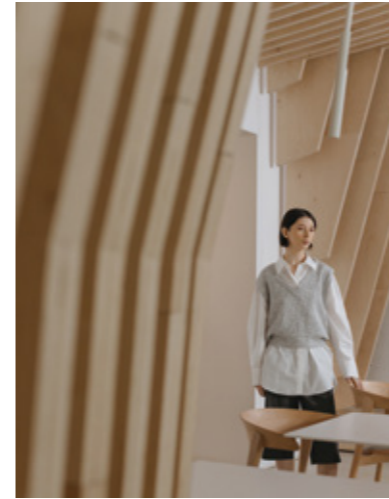


Classic Clash
 Stone
 Mix for a retro style

Choose the floor according to your aspirations, which will magnify your interior.

Japandi style

Essential interior design based on noble natural materials. The typical sobriety of Scandinavian furniture is combined with the symbolism of the Japanese tradition. Delicate chromatic tones and an obsessive care for selecting and positioning furnishing accessories. Volumes shaped with geometric lines, but made with pure, unpainted solid wood, with stones carved from solid blocks, with blown glass, with forged metal. Quality and comfort as absolute values in contrast to passing fashion. A soft and relaxing atmosphere never affected. Here are the keys to decodify this style that blends, through an acronym, two styles and two geographic areas only apparently distant from each other.



4645 C

5655 C

5773 C

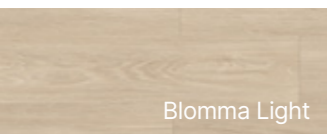
2310 C



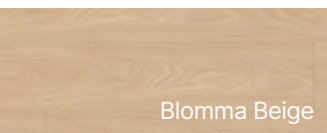
Qaja Honey



Qaja Beige



Blomma Light



Blomma Beige



Bohem Honey



Bohem Beige



#Simplicity #Purity #Handmade weaving #Meticulous details
#Lightness #Natural Materials #Bold #Solid Wood

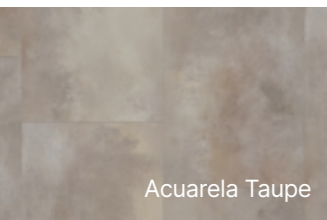
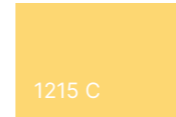
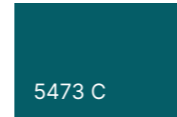
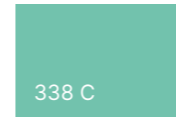
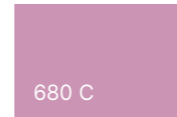


Transparency

The presentation of a new range of plexiglass products has revolutionized the concept of transparency. The possibility of capturing light and reflecting it by altering its colors like a prism, the semi-transparent walls that offer both privacy and the unexpected look beyond the steam, beyond the fog, represent the avant-garde of a very near future in the universe of materials. A play of shadows and lights, of shades of color, of layering in the transparent volume. Color is dared, even where pure, neutral transparency has always been sought.



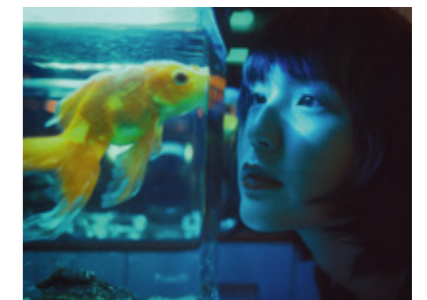
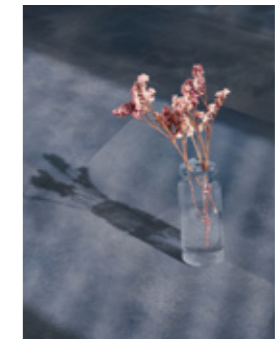
#Tie and Dye #Dégradé #Light
#Plexiglass #Fluid #Liquid #Mother Pearl



Acuarela Taupe



Acuarela Ink

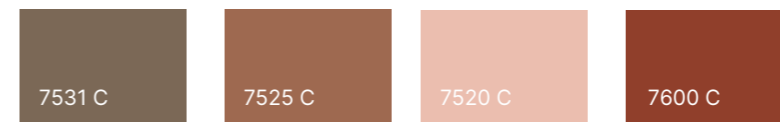
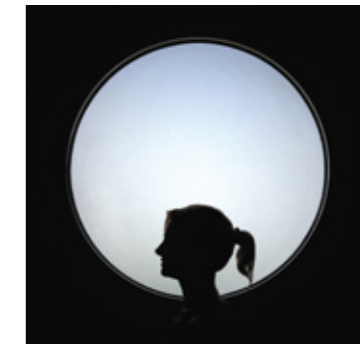
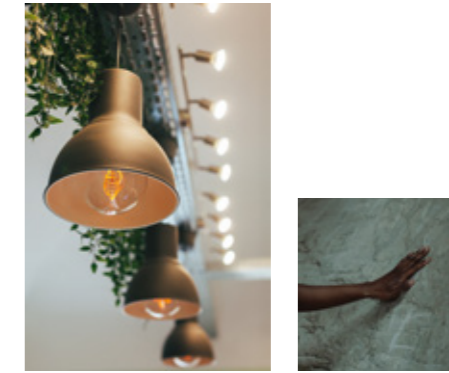
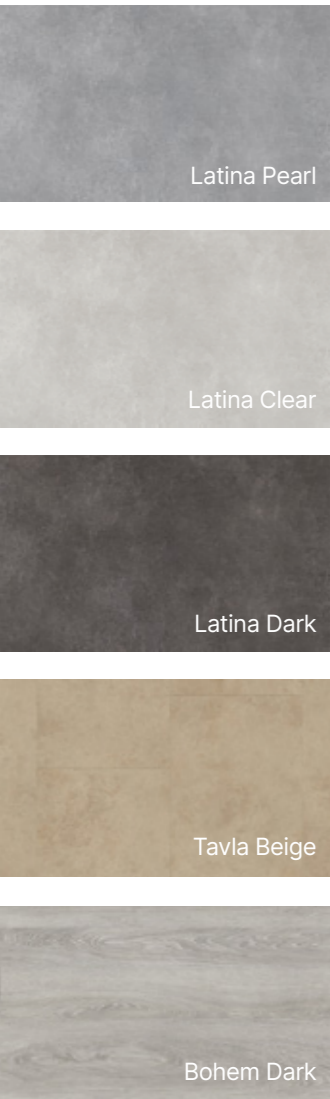


Terra Luna

This almost surreal theme represents the meeting point between the earth and the planets. Desert surfaces, carved out, eroded by the wind, apparently empty of life's forms, but rich in minerals with warm and rocky chromatic tones.

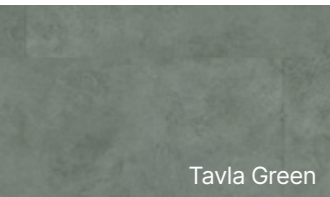
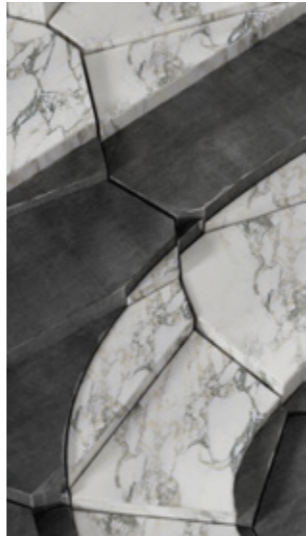
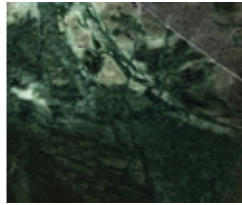
Terra - Luna describes a brutal environment drawn on volumes and rounded shapes. A universe in which inert raw materials such as plaster, cement, clay, stone reign with a new design approach oriented towards the monolithic solidity of the materials, almost a sort of spontaneous primitive monumental architecture. The tactile dimension is very important for this theme: the very soft three-dimensional volumes correspond to a massive, rough, almost brutal surface.

- #Roundness
- #Oversized
- #Raw Materials
- #Space
- #Primitive Shapes
- #Wild

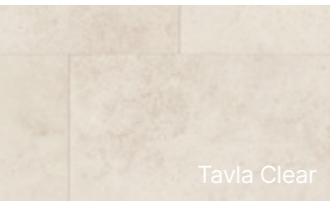


Classic Clash

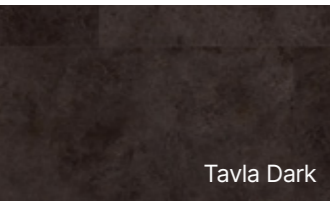
To describe this theme, we try to offer a new point of view in the use of marble and stone. We want to give a modern interpretation in the application of classic natural surfaces. We seek the evolution of the neo-classical style to which these materials traditionally belong. We witness a strong presence of color for this theme, we dare more, we use together colored marbles and stones with strong contrast in between. This avant-garde brings us a new interpretation that goes beyond the return to Art Decó, particularly strong in recent years, to reinvent the use of marble and stone. A modern creativity that uses marble and stone not with the intention of showing off luxury and opulence, but to amaze by offering new perspectives.



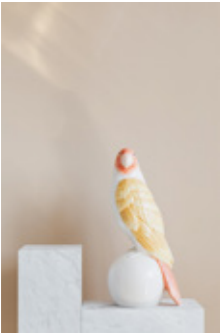
Tavla Green



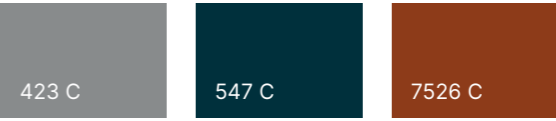
Tavla Clear



Tavla Dark



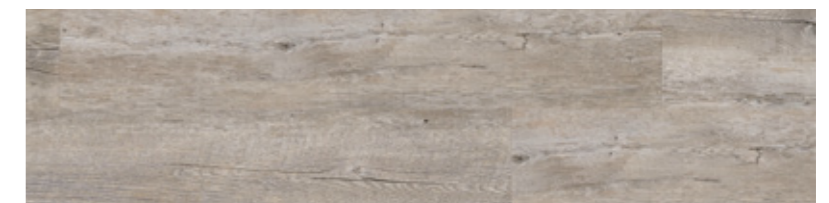
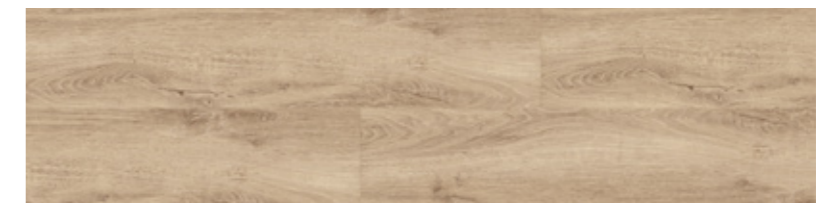
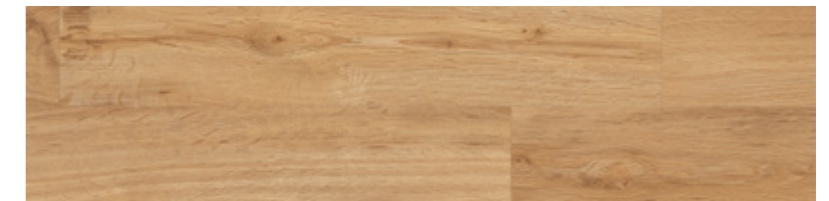
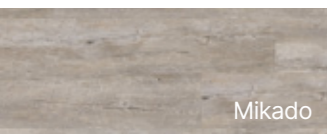
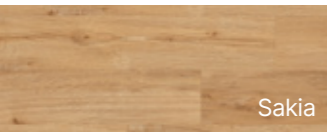
#Marble #Triumph #Stone Mix #Macro Terrazzo
#Timeless Beauty #Retro #Richness



Timeless Designs

It's the best sellers! Why? Because these decors cross all trends and years. It lasts despite your desires to change sofas, tables, chairs..., wall colors or decorative objects. These colors are suitable for all atmospheres, for modern and classic interiors.

#Essential #Modern
#Classic #The Everything



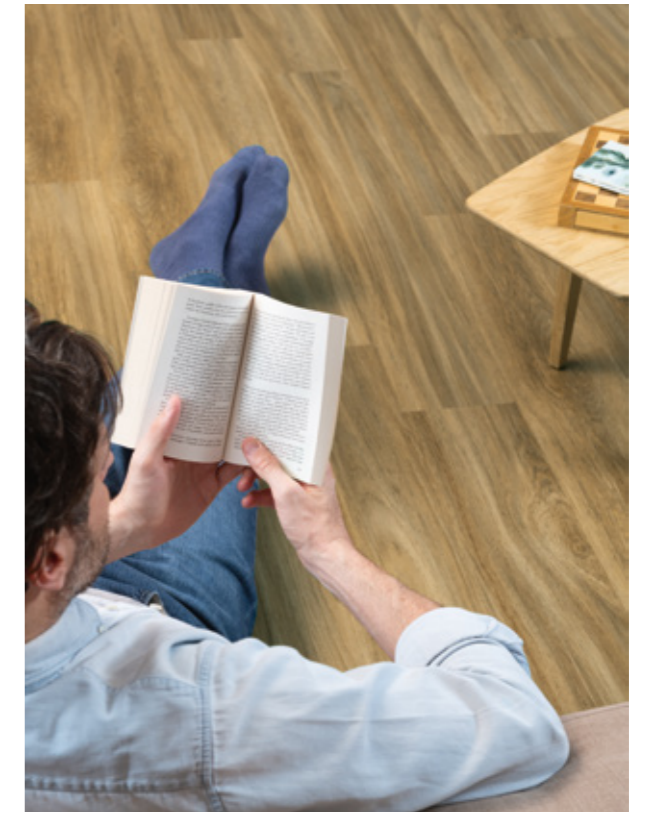
Connected to your life aspirations



Acuarela Ink 1475



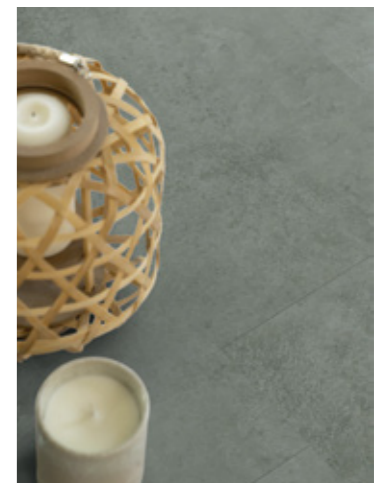
Qaja Honey 1474



Blomma Beige 1460

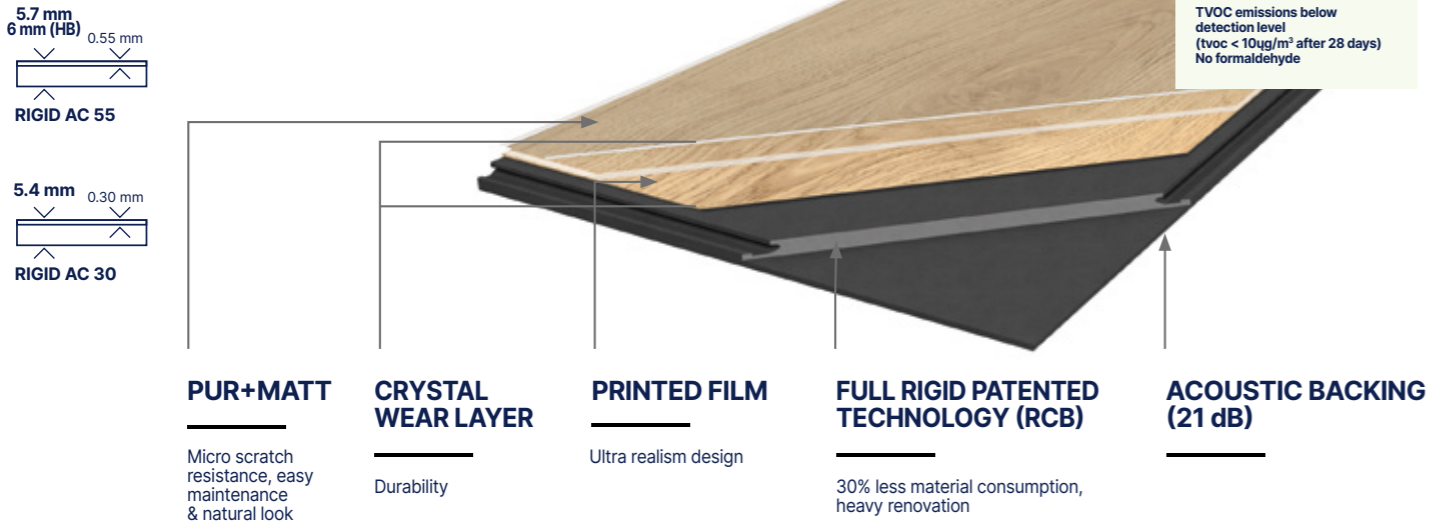


Tavla Green 1452



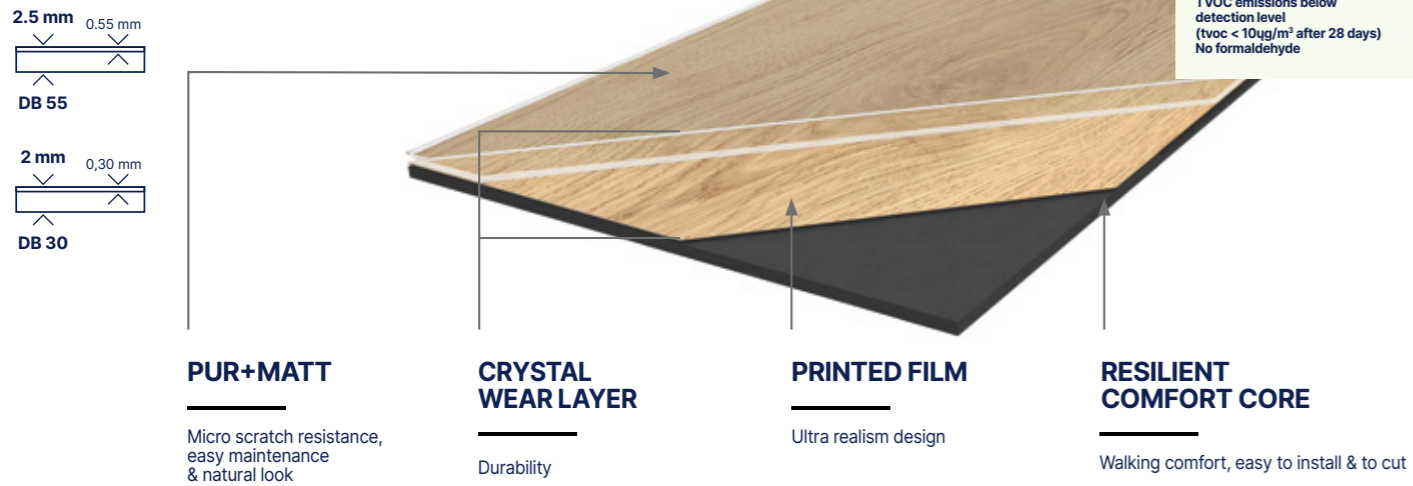
Virtuo 55 & 30 Rigid Acoustic

Formats (mm):
 RIGID AC 55 & 30 229x1250 229x1492 399x730
 RIGID AC 55 125x750



Virtuo 55 & 30

Formats (mm):
 DB 55 & 30 184x1219 230x1500 610x610 496x996
 DB 55 152x762



FAQ

I'd like a clearer idea by adding examples of Virtuo floors to a photo of my room.

With our Interior Designer service, you can test all our floors in your home using a photo of your interior. It's simple, fast and free!



Can I install my floor in a wetroom (bathroom, kitchen) and is it compatible with heated floors?

All the Virtuo products are suitable with wetrooms, water reversible and underfloor heating with circulating water, (max 28°C). Radiant electric underfloor heating is prohibited.

How to clean my Vinyl floor?

Some water and soap, and that's all! Our floors are immune to stains, so no special cleaning is required (no sanding, dry polishing, etc.). To quickly and easily remove dust, use a broom or vacuum cleaner. When it comes to cleaning, soapy water will more than do the job.

More than a floor..

Design skirting

Design matching



Vinyl Skirting: 6086 + Color code - Format: 60 mm x 2 lm - Packaging: 6 units = 12 lm
 MDF Skirting: 5947 + Color code - Format: 60 mm x 2.2 lm - Packaging: 5 units = 11 lm
 Please refer to the product overview

Design coverstrip

Design matching



Code: 0642 + Color code - Format: 37 mm x 930 mm
 Please refer to the product overview

Underlayer



Gerflor Smart Fix 16 dB
 Code: 1698
 Format: 1 m x 7.5 lm
 Can be combined with Virtuo 55 & 30

Technical Characteristics

Description	Virtuo 55 Rigid Acoustic		Virtuo 30 Rigid Acoustic		Virtuo 55		Virtuo 30		
	Standard	Herringbone							
Total Thickness	EN ISO 24346	mm	5.70	6	5.40		2.50	2.00	
Thickness of the wearlayer	EN ISO 24340	mm	0.55	0.55	0.30		0.55	0.30	
Weight	EN ISO 23997	g/m ²	7 000	9 480	6 900	3 850	4 290	3 180	3 580
Size	ISO 24342	mm	229 × 1492 229 × 1250 399 × 730	125 × 750	229 × 1492 229 × 1250 399 × 730	152 × 762 496 × 996 184 × 1219	230 × 1500 610 × 610 184 × 1219 (EIR) 230 × 1500 (EIR)	457 × 914 610 × 610 184 × 1219 230 × 1500	184 × 1219 (EIR) 230 × 1500 (EIR)
Number of planks or tiles per box / Sqm per box	-	-	7 / 2.39 m ² 7 / 2.00 m ² 7 / 2.04 m ²	16 / 1.50 m ²	7 / 2.39 m ² 7 / 2.00 m ² 7 / 2.04 m ²	33 / 3.82 m ² 8 / 3.96 m ² 15 / 3.36 m ²	9 / 3.11 m ² 9 / 3.35 m ² 15 / 3.36 m ² 9 / 3.11 m ²	11 / 4.60 m ² 13 / 4.83 m ² 21 / 4.71 m ² 13 / 4.49 m ²	17 / 3.81 m ² 11 / 3.80 m ²
Classification									
Norm/Product Specification	-	-	EN ISO 10582	EN ISO 10582	EN ISO 10582	EN ISO 10582	EN ISO 10582	EN ISO 10582	EN ISO 10582
European Classification	EN ISO 10874	class	33 - 42	23 - 31	33 - 42	23 - 31	33 - 42	23 - 31	23 - 31
Fire Rating	EN 13 501-1	class	Bfl-s1	Bfl-s1	Bfl-s1	Bfl-s1	Bfl-s1	Bfl-s1	Bfl-s1
Static Electrical Propensity	EN 1815	kV	< 2	< 2	< 2	< 2	< 2	< 2	< 2
Slip Resistance Wet ⁽¹⁾	DIN 51130 / BGR 181	class	R10	R10	R10	R10	R10	R10	R10
Performances									
Wear Resistance	EN 660,2	mm ³	< 2.0	< 2.0	< 2.0	< 2.0	< 2.0	< 2.0	< 2.0
Wear Group	QB 30	group	T	T	T	T	T	T	T
Type Binder content	ISO 10582	group	I	I	I	I	I	I	I
Dimensional stability (norm)	EN ISO 23999	%	≤ 0.15	≤ 0.15	≤ 0.15	≤ 0.25	≤ 0.25	≤ 0.25	≤ 0.25
Dimensional stability (average measured value)	-	%	≤ 0.10	≤ 0.10	≤ 0.10	≤ 0.10	≤ 0.10	≤ 0.10	≤ 0.10
Residual Indentation	EN ISO 24343-1	mm	≤ 0.10	≤ 0.10	≤ 0.10	≤ 0.10	≤ 0.10	≤ 0.10	≤ 0.10
Impact sound insulation	EN ISO 717-2	dB	21	21	21	4	4	4	4
Room Impact	NF S 31074	dB	79	79	79	77	77	77	77
Castor chair test	ISO 4918	-	OK	OK	OK	OK	OK	OK	OK
Thermal Conductivity	EN ISO 10456	W/(m,K)	0.25	0.25	0.25	0.25	0.25	0.25	0.25
Colour Fastness	EN ISO 105 - B02	degree	≥ 6	≥ 6	≥ 6	≥ 6	≥ 6	≥ 6	≥ 6
Surface Treatment	-	-	PUR+MATT	PUR+MATT	PUR+MATT	PUR+MATT	PUR+MATT	PUR+MATT	PUR+MATT
Chemical Products Resistance	EN ISO 26987	-	Excellent	Excellent	Excellent	Excellent	Excellent	Excellent	Excellent
Environment/Indoor Air Quality									
TVOC after 28 days	ISO 16000-6	micrograms /m ³	< 10	< 10	< 10	< 10	< 10	< 10	< 10

Ce Marking



EN 14041



(1) Ramp test with oil



Virtuo	55 Rigid Acoustic	30 Rigid Acoustic	55 Dry Back	30 Dry Back	55 HB Rigid Acoustic	55 HB Dry Back	PVC Skirting	MDF Skirting	Coverstrip
Color Design									
Acuarela Ink	39071475 399 × 730	39101475 399 × 730	39021475 496 × 996	39181475 457 × 914			6086S196	5947S196	0642C018
Acuarela Taupe	39071476 399 × 730	39101476 399 × 730	39021476 496 × 996	39181476 457 × 914			6086S197	5947S197	0642C019
Baita Blond	39091023 229 × 1492	39141023 229 × 1492	36131023 230 × 1500	39191023 230 × 1500			6086S081	5947S081	0642C002
Baita Medium	39091025 229 × 1492	39141025 229 × 1492	36131025 230 × 1500	39191025 230 × 1500			6086S082	5947S082	0642C006
Baita Taupe	39091026 229 × 1492	39141026 229 × 1492	36131026 230 × 1500	39191026 230 × 1500			6086S079	5947S079	0642C013
Blomma Beige*	39061460 229 × 1492	39131460 229 × 1492	38981460 230 × 1500	39001460 230 × 1500	39041460 125 × 750	39201460 152 × 762	6086S168	5947S168	0642C006
Blomma Brown*	39061461 229 × 1492	39131461 229 × 1492	38981461 230 × 1500	39001461 230 × 1500			6086S194	5947S194	0642C007
Blomma Clear*	39061462 229 × 1492	39131462 229 × 1492	38981462 230 × 1500	39001462 230 × 1500			6086S168	5947S168	0642C006
Blomma Cream*	39061463 229 × 1492	39131463 229 × 1492	38981463 230 × 1500	39001463 230 × 1500	39041463 125 × 750	39201463 152 × 762	6086S193	5947S193	0642C005
Blomma Light*	39061464 229 × 1492	39131464 229 × 1492	38981464 230 × 1500	39001464 230 × 1500	39041464 125 × 750	39201464 152 × 762	6086S188	5947S188	0642C005
Blomma Natural*	39061465 229 × 1492	39131465 229 × 1492	38981465 230 × 1500	39001465 230 × 1500	39041465 125 × 750	39201465 152 × 762	6086S016	5947S016	0642C004
Bohem Beige*	39081456 229 × 1250	39111456 229 × 1250	38971456 184 × 1219	38991456 184 × 1219			6086S193	5947S193	0642C005
Bohem Dark Grey*	39081457 229 × 1250	39111457 229 × 1250	38971457 184 × 1219	38991457 184 × 1219			6086S120	5947S120	0642C010
Bohem Honey*	39081458 229 × 1250	39111458 229 × 1250	38971458 184 × 1219	38991458 184 × 1219			6086S189	5947S189	0642C008
Bohem Light Grey*	39081459 229 × 1250	39111459 229 × 1250	38971459 184 × 1219	38991459 184 × 1219			6086S195	5947S195	0642C009
Daintree Brown	39091010 229 × 1492	39141010 229 × 1492	36131010 230 × 1500	39191010 230 × 1500			6086S024	5947S024	0642C001
Daintree Honey	39091455 229 × 1492	39141455 229 × 1492	36131455 230 × 1500	39191455 230 × 1500			6086S201	5947S201	0642C003
Daintree Natural	39091454 229 × 1492	39141454 229 × 1492	36131454 230 × 1500	39191454 230 × 1500			6086S025	5947S025	0642C002
Latina Clear	39070990 399 × 730	39100990 399 × 730	36070990 610 × 610	39170990 610 × 610			6086S094	5947S094	0642C017
Latina Dark	39070992 399 × 730	39100992 399 × 730	36070992 610 × 610	39170992 610 × 610			6086S092	5947S092	0642C015
Latina Pearl	39070994 399 × 730	39100994 399 × 730	36070994 610 × 610	39170994 610 × 610			6086S096	5947S096	0642C016
Mikado	39051100 229 × 1250	39121100 229 × 1250	39261100 184 × 1219	39161100 184 × 1219			6086S053	5947S053	0642C014
Qaja Beige	39051473 229 × 1250	39121473 229 × 1250	39261473 184 × 1219	39161473 184 × 1219			6086S201	5947S201	0642C006
Qaja Honey	39051474 229 × 1250	39121474 229 × 1250	39261474 184 × 1219	39161474 184 × 1219			6086S189	5947S189	0642C003
Sakia	39051118 229 × 1250	39121118 229 × 1250	39261118 184 × 1219	39161118 184 × 1219			6086S008	5947S008	0642C008
Sunny Light	39050996 229 × 1250	39120996 229 × 1250	39260996 184 × 1219	39160996 184 × 1219			6086S039	5947S039	0642C011
Sunny Nature*	39050997 229 × 1250	39120997 229 × 1250	39260997 184 × 1219	39160997 184 × 1219	39040997 125 × 750	39200997 152 × 762	6086S106	5947S106	0642C002
Sunny Snow	39051477 229 × 1250	39121477 229 × 1250	39261477 184 × 1219	39161477 184 × 1219			6086S076	5947S076	0642C012
Tavla Beige	39071451 399 × 730	39101451 399 × 730	36071451 610 × 610	39171451 610 × 610			6086S178	5947S178	0642C021
Tavla Clear	39071450 399 × 730	39101450 399 × 730	36071450 610 × 610	39171450 610 × 610			6086S200	5947S200	0642C020
Tavla Dark	39071453 399 × 730	39101453 399 × 730	36071453 610 × 610	39171453 610 × 610			6086S199	5947S199	0642C023
Tavla Green	39071452 399 × 730	39101452 399 × 730	36071452 610 × 610	39171452 610 × 610			6086S198	5947S198	0642C022

* EIR: Emboss In Register. Please note the separate pricing for the ultra-realistic surface embossing (EIR) and herringbone decors.

S001: White

Packaging

Format (mm)	m ² /box	m ² /pallet	Format (mm)	m ² /box	m ² /pallet	Format (mm)	m ² /box	m ² /pallet	Format (mm)	m ² /box	m ² /pallet	Format (mm)	m ² /box	m ² /pallet	Format (mm)	m ² /box	m ² /pallet
Virtuo 55 Rigid Acoustic			Virtuo 30 Rigid Acoustic			Virtuo 55 Dry Back			Virtuo 30 Dry Back			Virtuo 55 HB Rigid Acoustic			Virtuo 55 HB Dry Back		
229 × 1492	2.39	114.72	229 × 1492	2.39	114.72	496 × 996	3.96	213.84	457 × 914	4.60	230.00	125 × 750	1.50	84.00	152 × 762	3.82	213.92
229 × 1250	2.00	96.00	229 × 1250	2.00	96.00	184 × 1219	3.36	215.04	610 × 610	4.83	202.86						
399 × 730	2.04	114.24	399 × 730	2.04	114.24	230 × 1500	3.11	186.60	184 × 1219	4.71	263.76						
						610 × 610	3.35	187.60	230 × 1500	4.49	255.93						
						184 × 1219 (EIR)	3.36	188.16	184 × 1219 (EIR)	3.81	228.60						
						230 × 1500 (EIR)	3.11	186.60	230 × 1500 (EIR)	3.80	228.00						

AUSTRALIA/NEW ZEALAND

Gerflor Australasia Pty. Ltd
Australia Tel: +61 3 9832 1333
e-mail: gerflor-australia-cs@gerflor.com.au

AUSTRIA/SWITZERLAND

Gerflor GmbH
Tel: +43 (0)72 29/70 800
e-mail: austria@gerflor.com - switzerland@gerflor.com

BELGIUM/LUXEMBURG

Gerflor Benelux
Tel: +32 (0)3 766 42 82
e-mail: gerflorbe@gerflor.com

CANADA

Gerflor International
Tel: +1-844-437-3566
e-mail: gerflorcanada@gerflor.com

CZECH REPUBLIC & SLOVAKIA

Gerflor CZ s.r.o.
Tel: +420 602 192 192
e-mail: gerflorczech@gerflor.com

FINLAND

Gerflor Oy
Tel: +358 (0) 10 6 17 5150
e-mail: info@gerflor.fi

FRANCE

Gerflor
Tel: 00 33 4 75 50 68 68
e-mail: serviceconso@gerflor.com

GERMANY

Gerflor Mipolam GmbH
Tel: +49 (0)22 41-25 30-0
e-mail: gerflormipolam@gerflor.com

ITALY

Gerflor S.p.A.
Tel: +39 02 90 40 10
e-mail: gerfloritalia@gerflor.com

MIDDLE EAST

Gerflor Middle East
Tel: +966 3 847 1779
e-mail: info@gerflorme.com

NETHERLANDS

Gerflor Benelux
Tel: +31 (0)40 266 17 00
e-mail: gerflornl@gerflor.com

OTHER COUNTRIES

Gerflor International
Tel: +33 (0)4 74 05 40 00
e-mail: info.marketing@gerflor.com

POLAND

Gerflor Polska Sp z o.o
Tel: + 48 61 823 34 01
e-mail: info@gerflor.pl

PORTUGAL

Gerflor Iberia, SA
Tel: +351 21 843 95 49
e-mail: gerflorportugal@gerflor.com

SCANDINAVIA

Gerflor Scandinavia a.s.
Tel: + 47 64 95 60 70
e-mail: ordre@gerflor.no / order@gerflor.se

SPAIN

Gerflor Iberia, SA
Tel: +34 91 653 50 11
e-mail: gerfloriberia@gerflor.com

UNITED KINGDOM

Gerflor Ltd
Sample service: Contractuk@gerflor.com
Office Tel: +44 333 241 2901

We care / we act Our Commitments for a Sustainable future



CARBON FOOTPRINT*

-20 % kg CO₂ equivalent/m² between 2020 and 2025



BIOSOURCED CONTENT**

10 % by 2025



RECYCLED CONTENT

30 % by 2025



ADHESIVE FREE***

35 % by 2025



ANNUAL VOLUME RECYCLED

60 000 t by 2025



* Scopes 1 and 2 defined in the GHG protocol ** % of activity with biosourced materials *** % of activity - adhesive free solution